



# TEILELISTE

Part list

## Rundsäum- Automat

zum vollautom. Rundsäumen des Bundes

**Hemming double needle coverstitch machine**  
for full autom. hemming seams of waistband

# BASS 8040

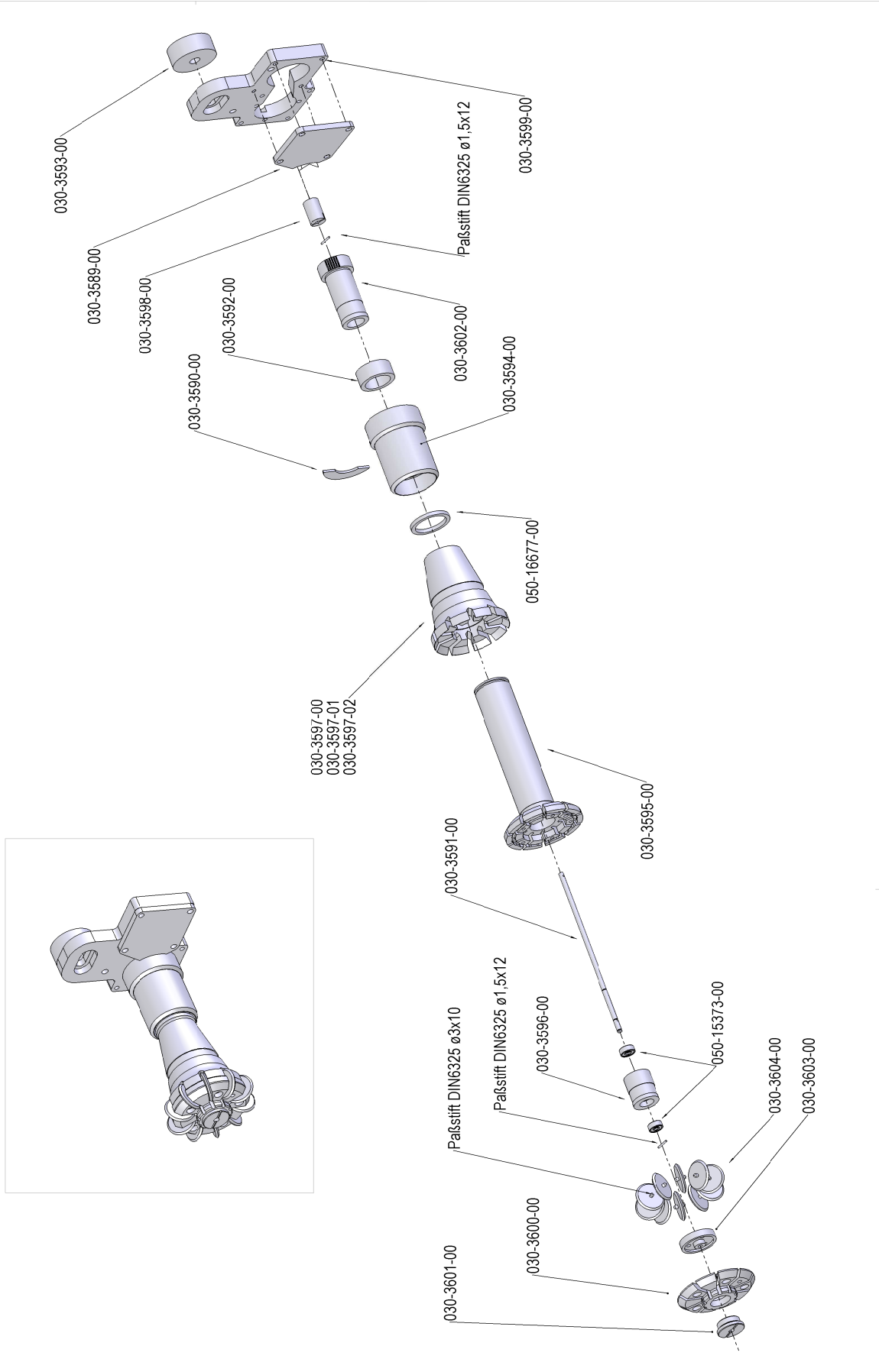
Tel. 0049 6095/99233-10

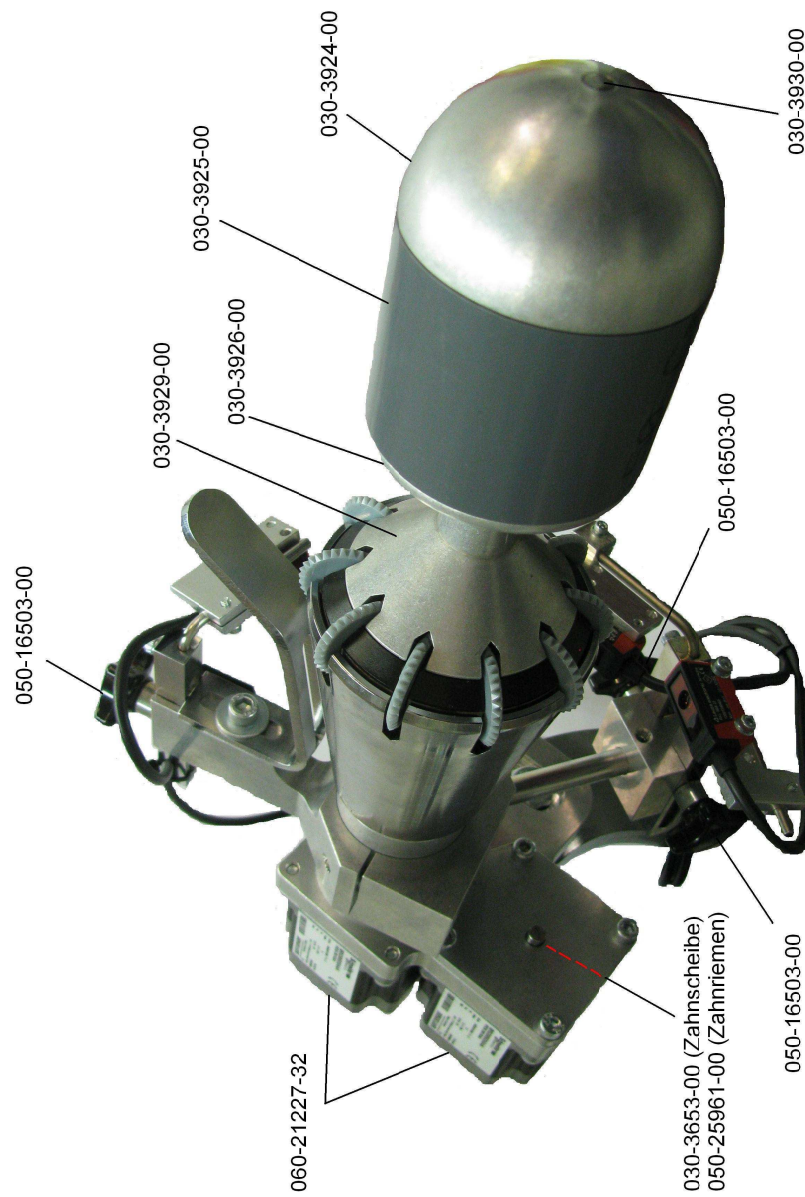
Fax 0049 6095/99233-20

info@assag.de  
www.assag.de



<b>BENNENUNG</b>	<b>TAFEL PAGE</b>	<b>NAME</b>
Transportrolle	1	transport roll
Kantenführung (Fotozellen)	2	edge guide
Schwenkeinheit	3	swivel unit
Transportrolle am Spannarm	4	transport roll on the tension arm
Spannarm	5	tension arm
Anbindung (Spannarm)	6	binding (tension arm)
Ventilverteilung	7	valve distribution
Fußtritt	8	footswitch
Blasdüsen	9	blowing nozzles
Oberteil - Montage	10	sewing head assembly
Tischteile	11	table parts
Stapler	12	stacker

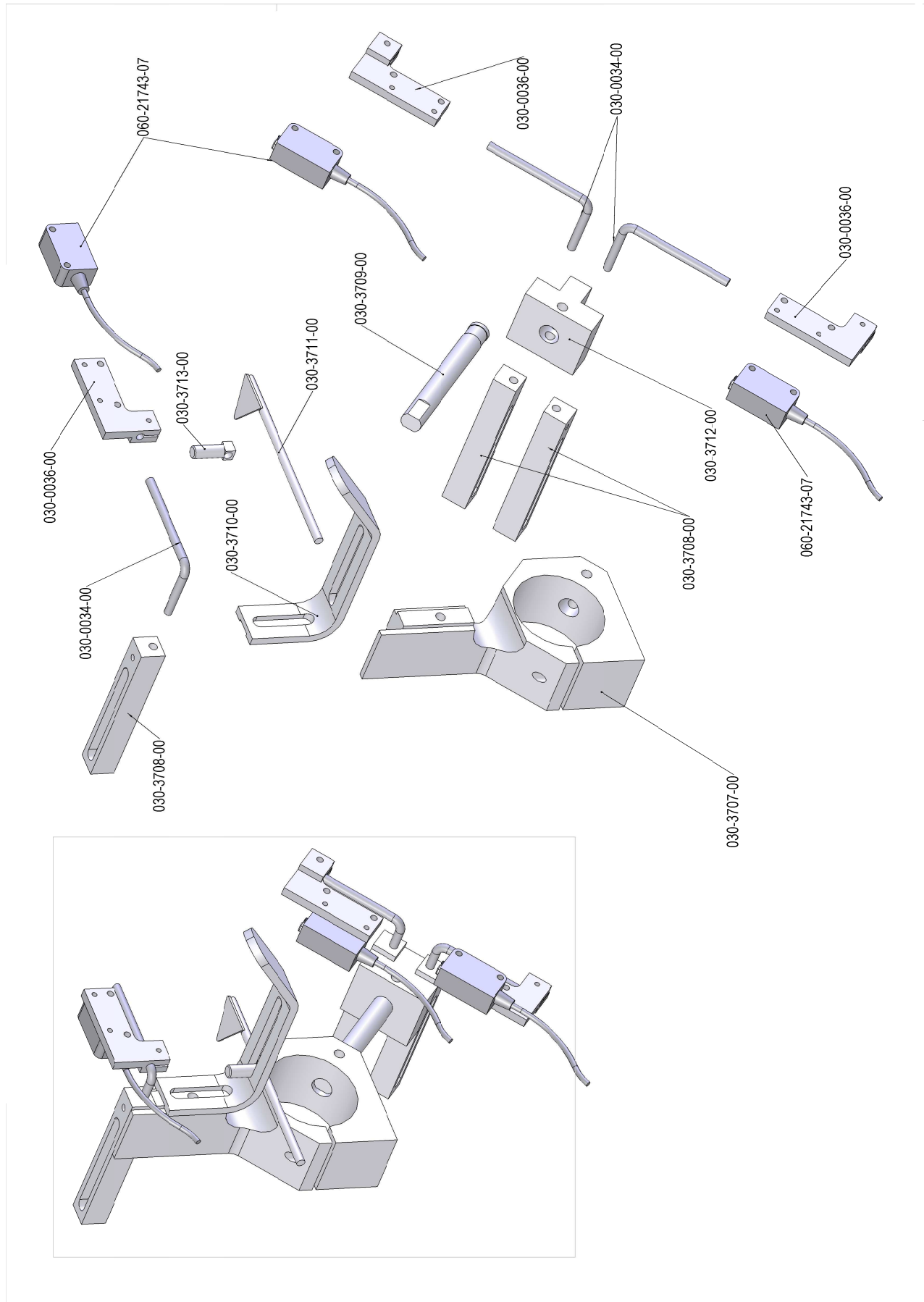


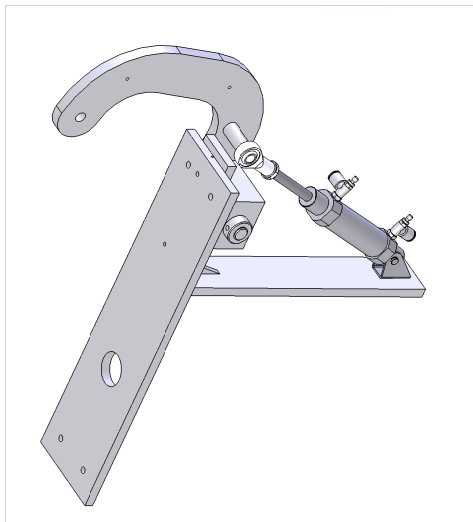
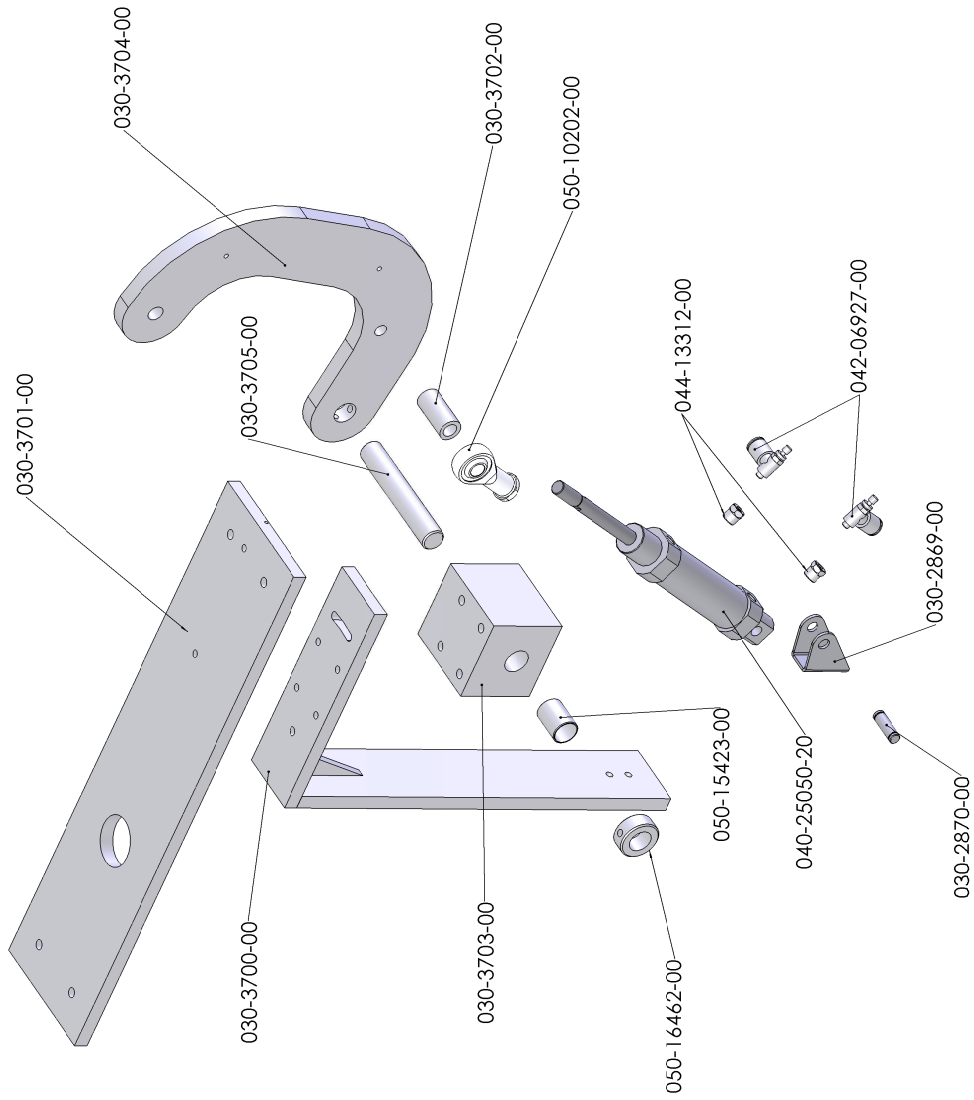


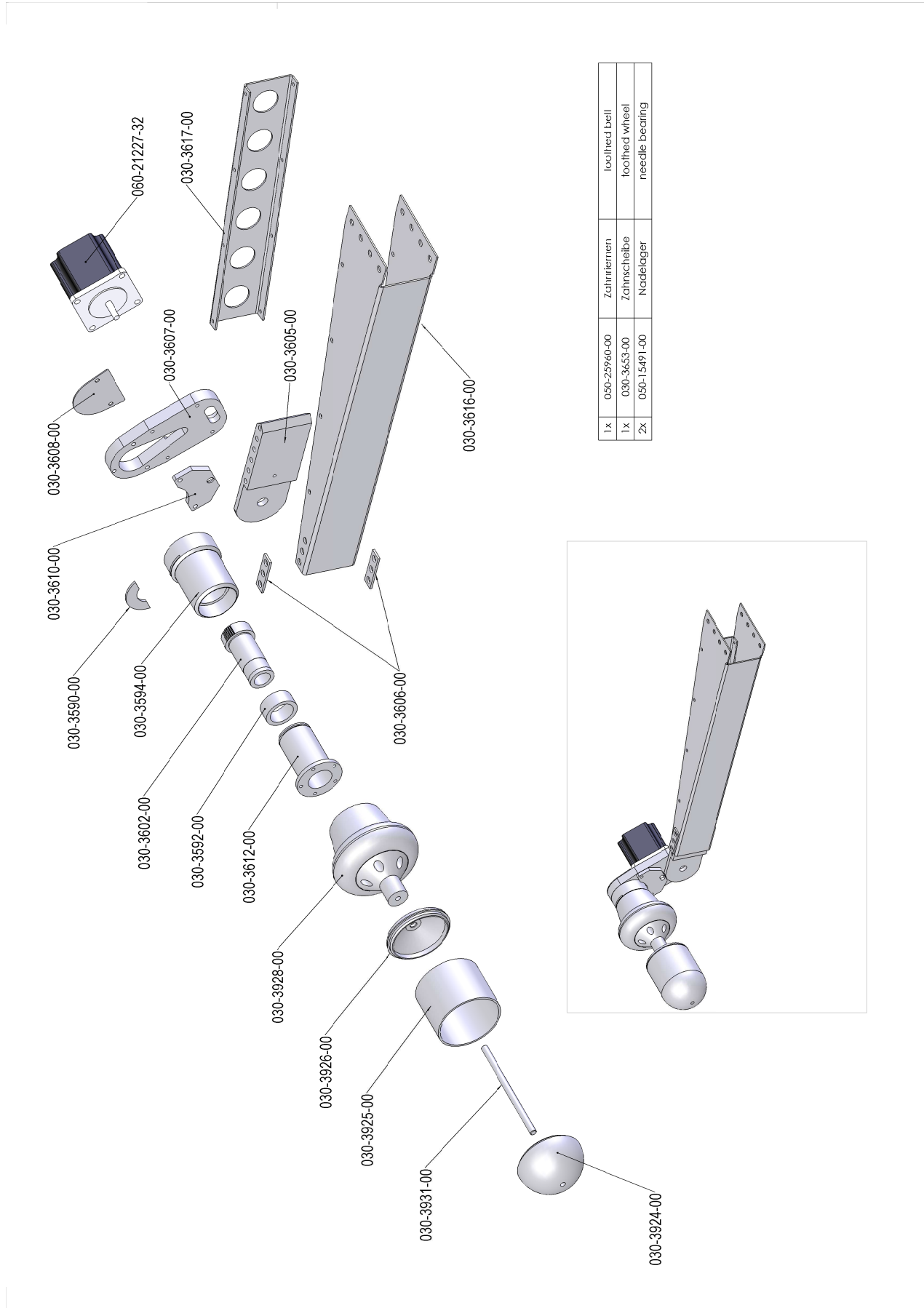
**BASS 8040**

**Transportrolle**

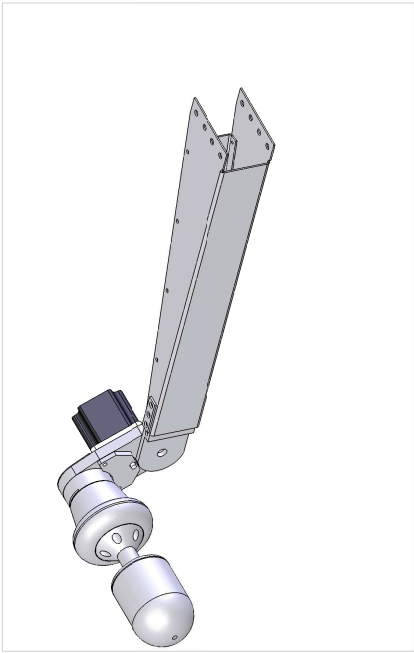
**Tafel 1.1**



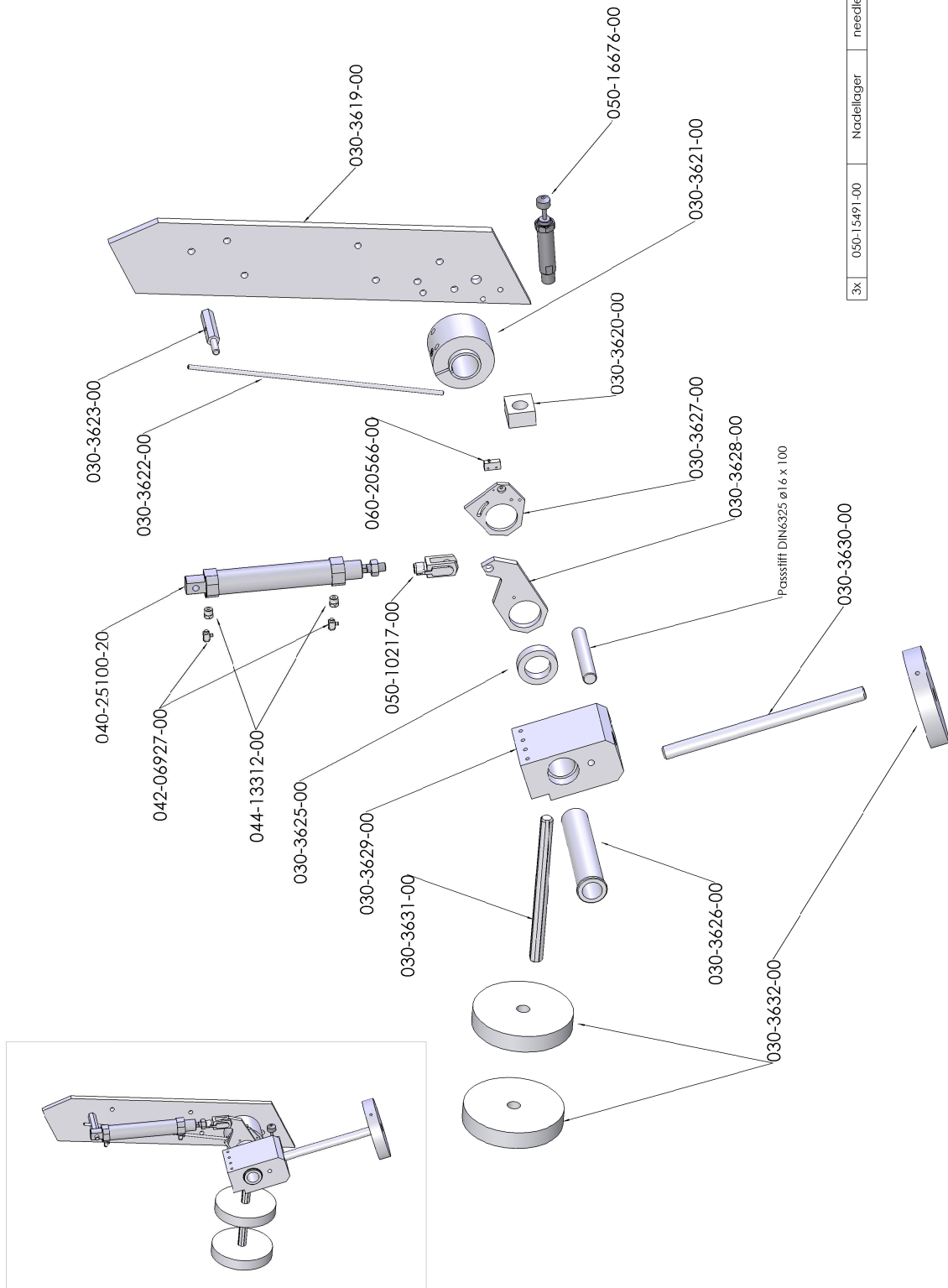




1x	050-25960-00	Zahnriterrn	toothed bell
1x	030-3653-00	Zahnscheibe	toothed wheel
2x	050-15491-00	Nadelager	needle bearing





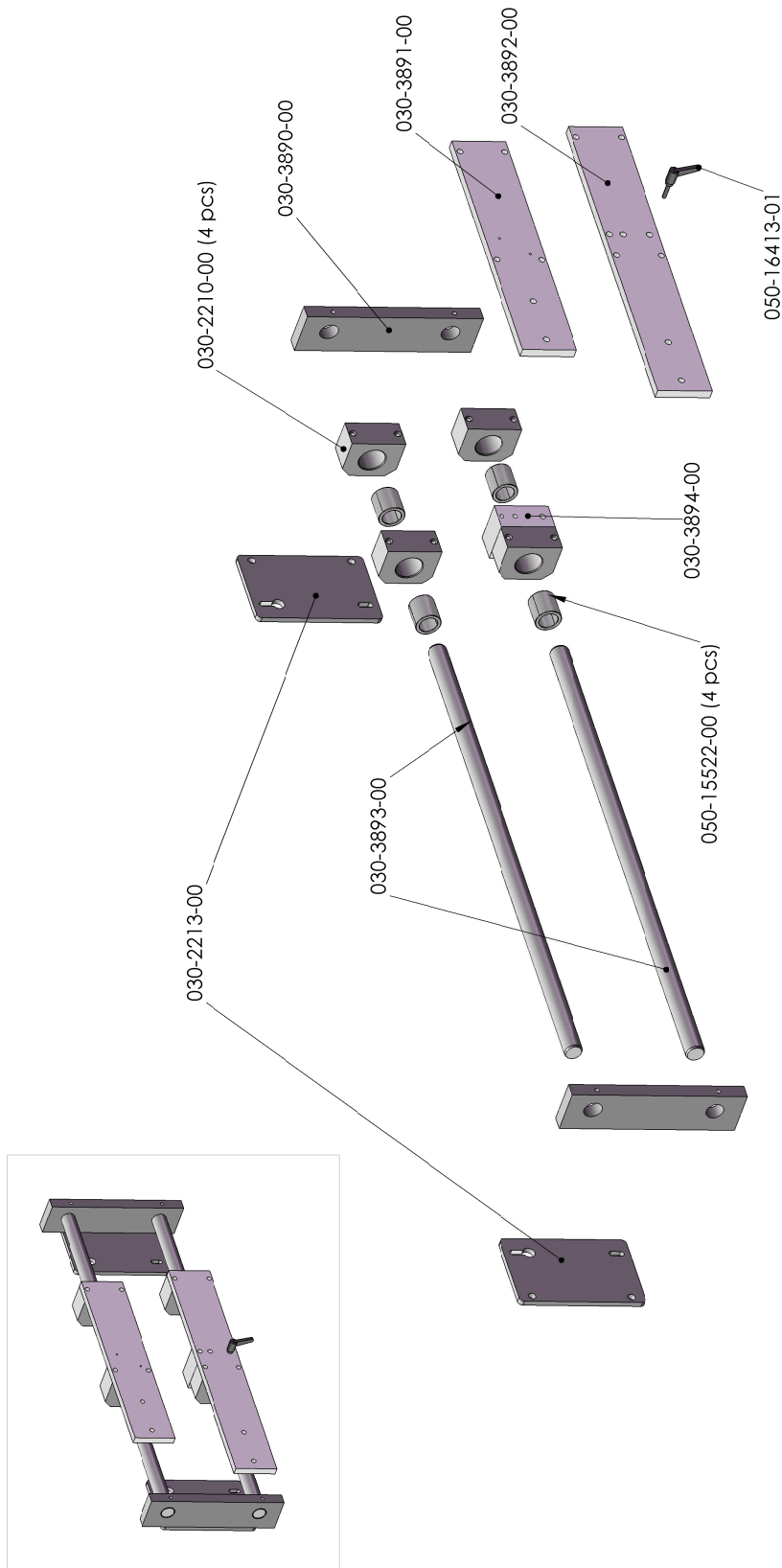


3x	050-15491-00	Nadellager	needle bearing
----	--------------	------------	----------------

**BASS 8040**

**Spannarm**

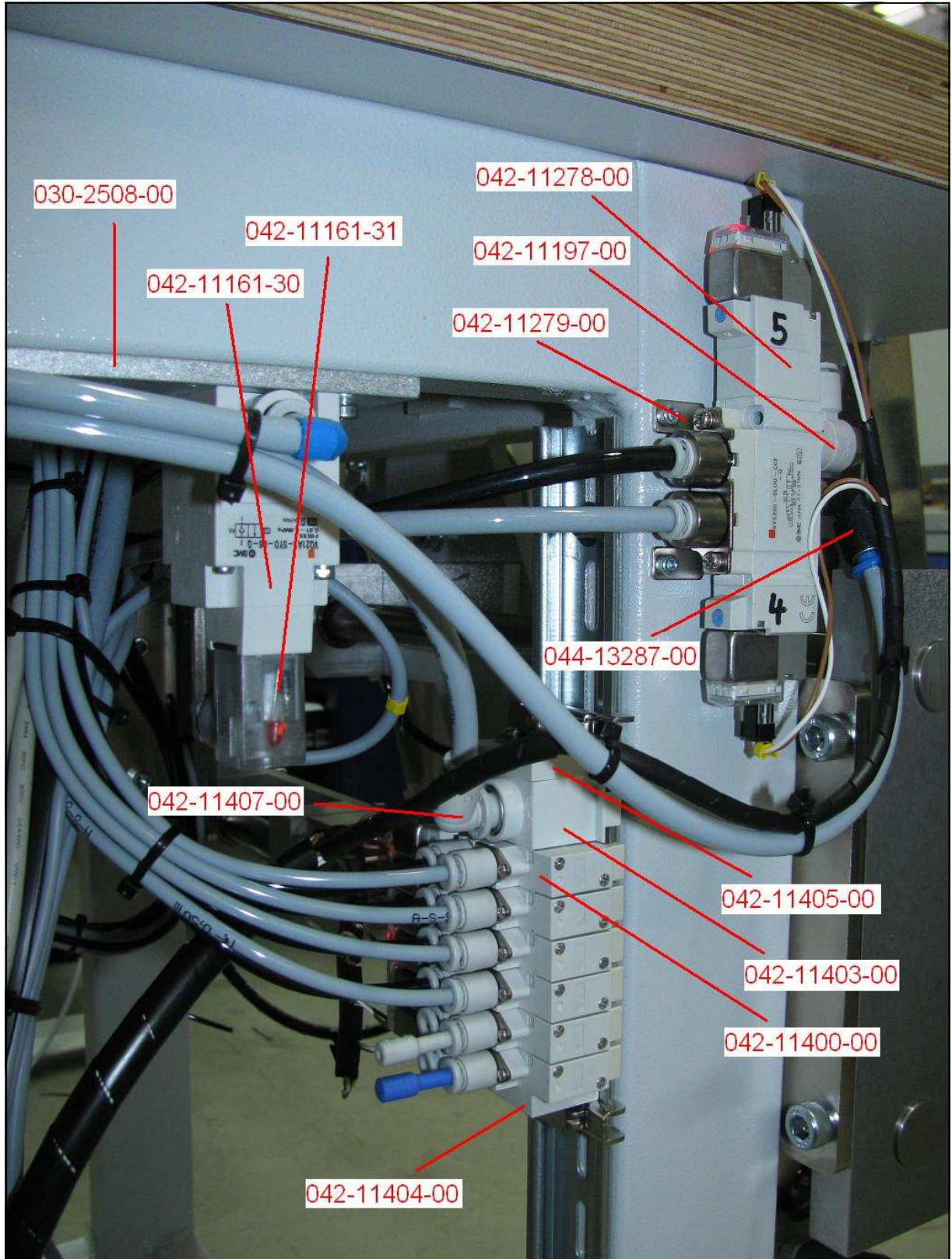
**Tafel 5.0**



**BASS 8040**

**Anbindung (Spannarm)**

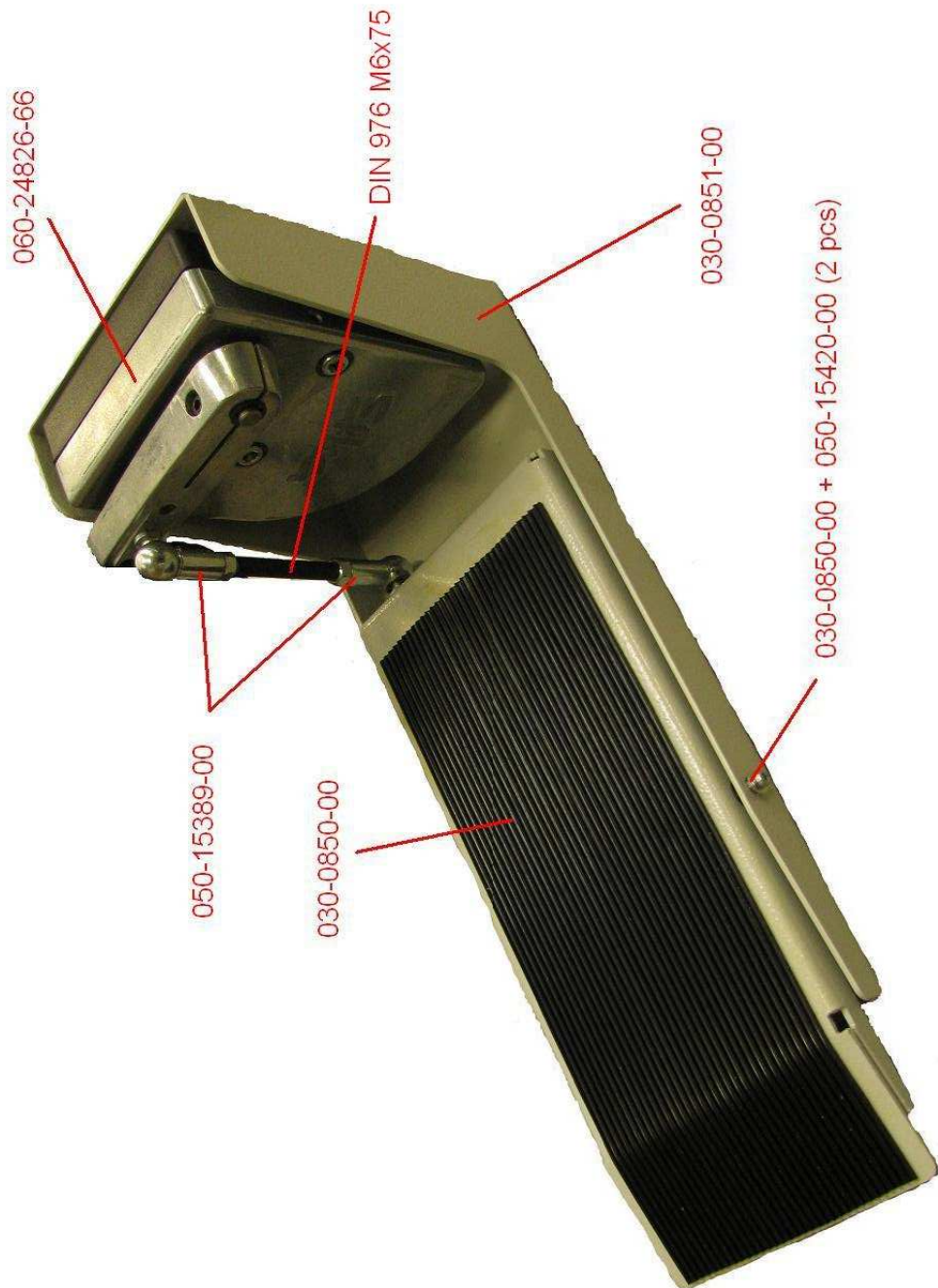
**Tafel 6.0**



**BASS 8040**

**Ventilverteilung**

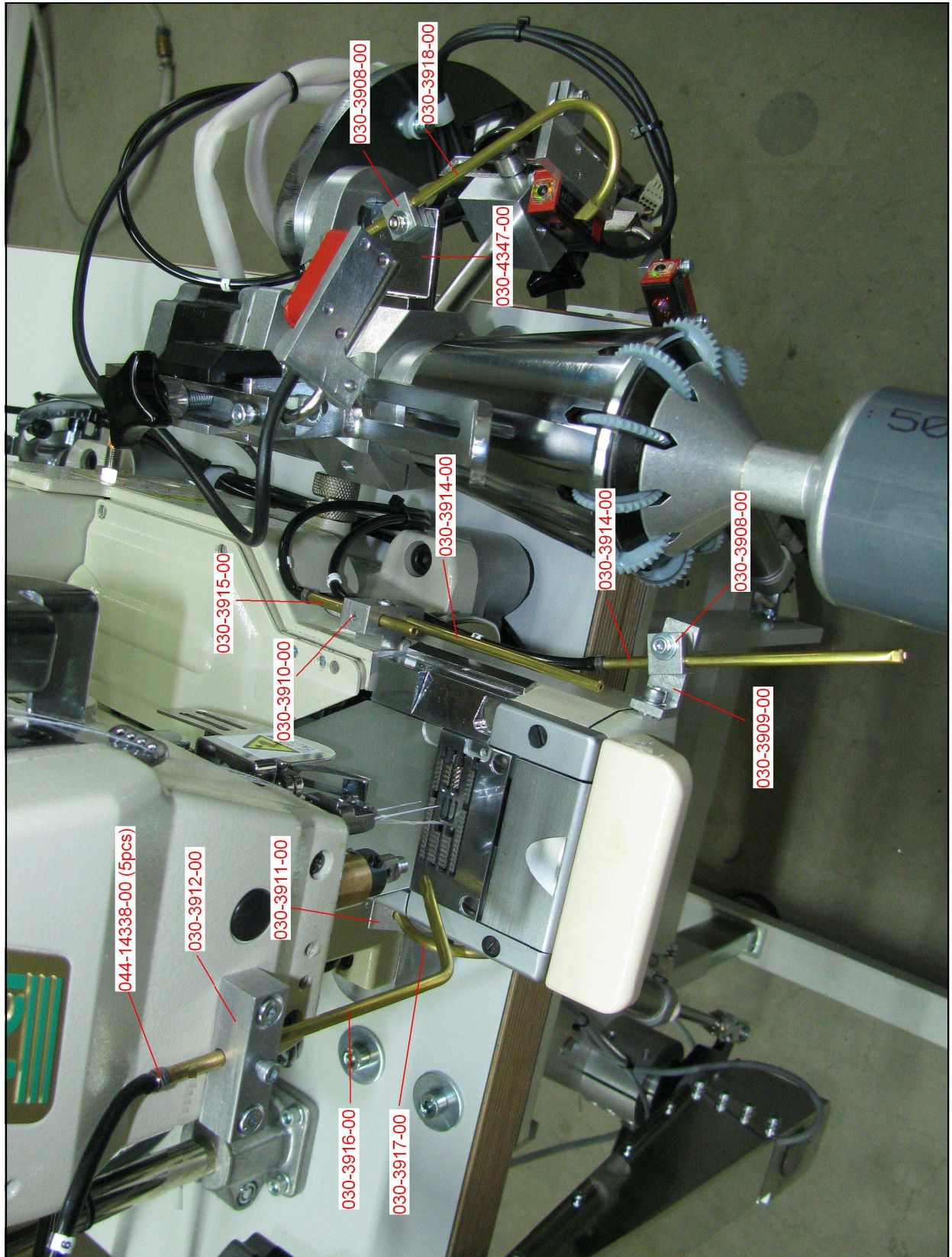
**Tafel 7.0**



**BASS 8040**

**Fußtritt**

**Tafel 8.0**



044-14338-00 (5pcs)

030-3912-00

030-3911-00

030-3916-00

030-3917-00

030-3915-00

030-3910-00

030-3914-00

030-3914-00

030-3908-00

030-3909-00

030-3908-00

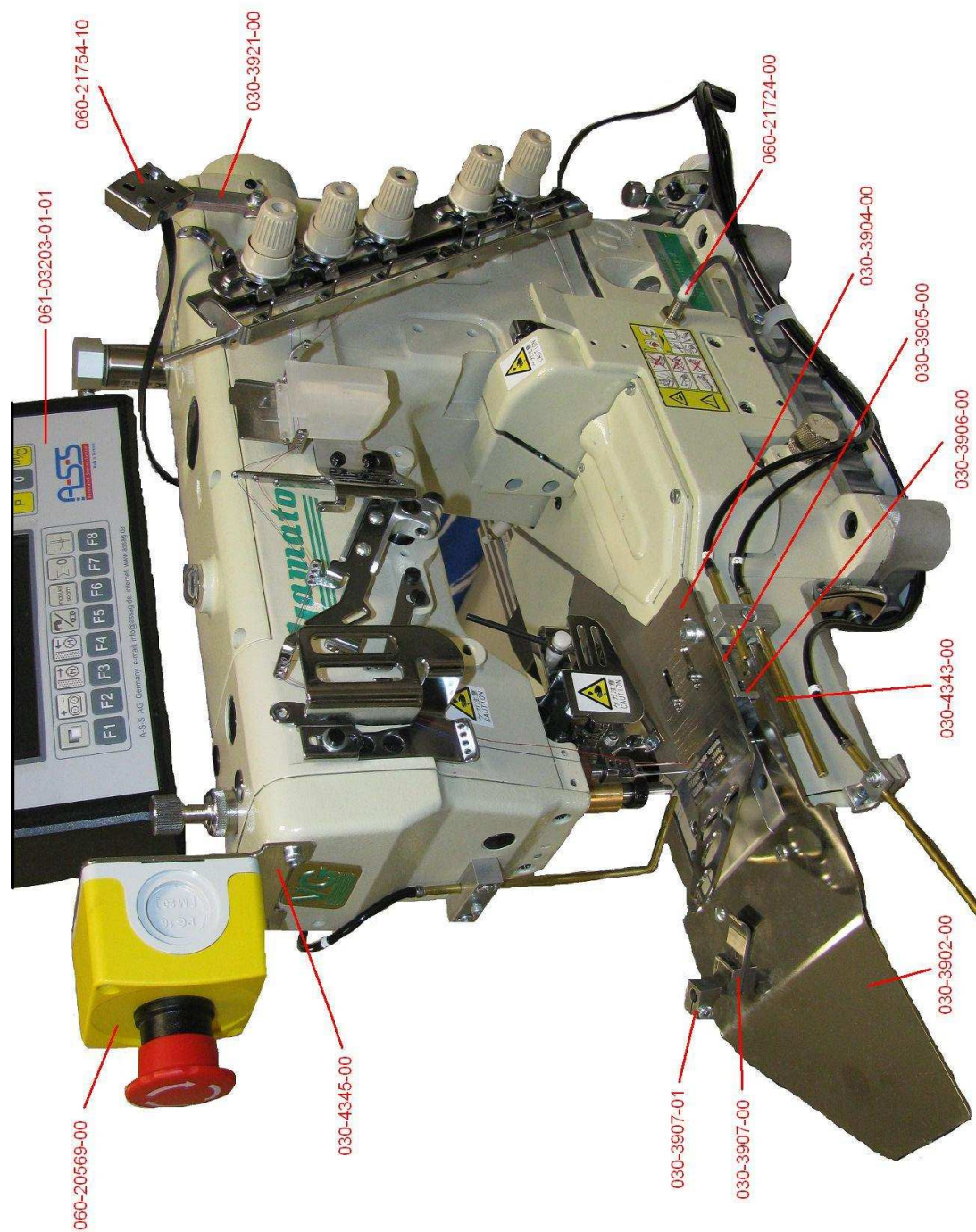
030-3918-00

030-4347-00

**BASS 8040**

**Blasdüsen**

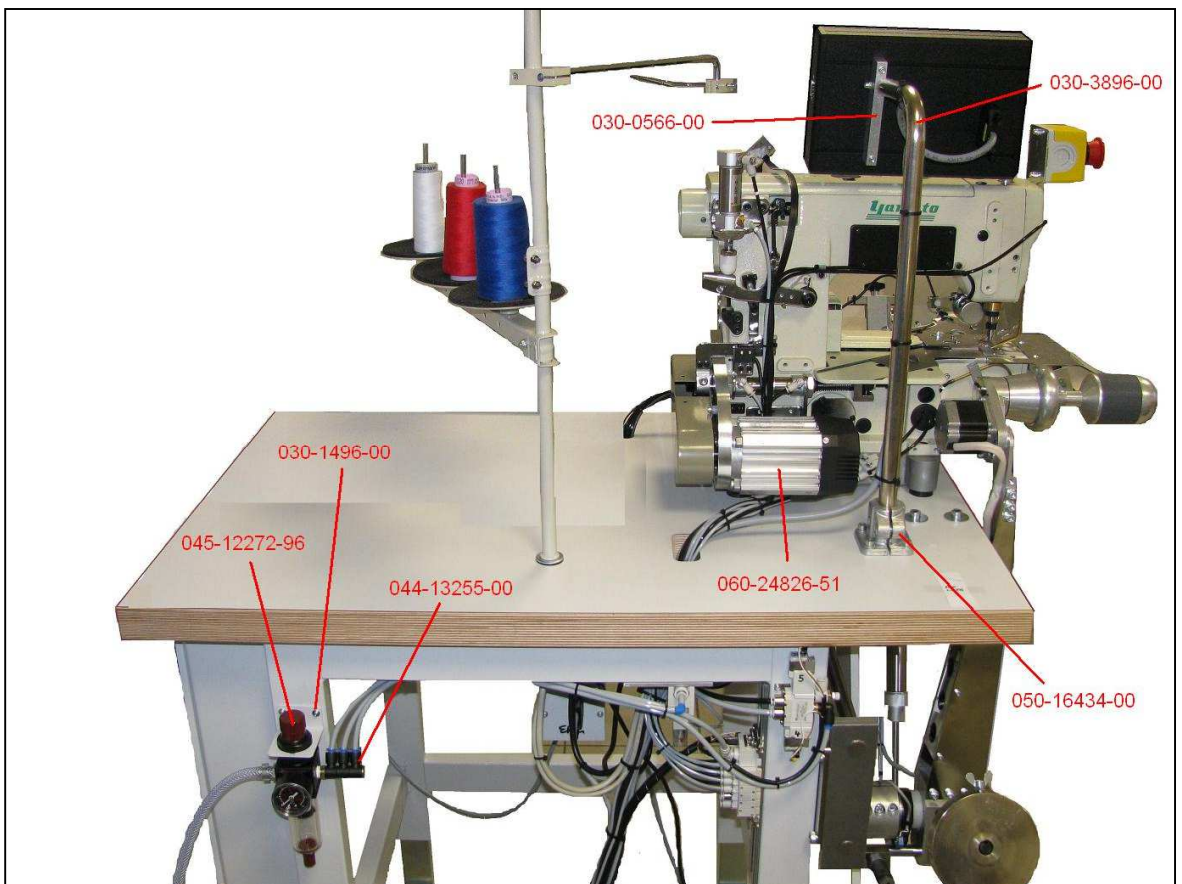
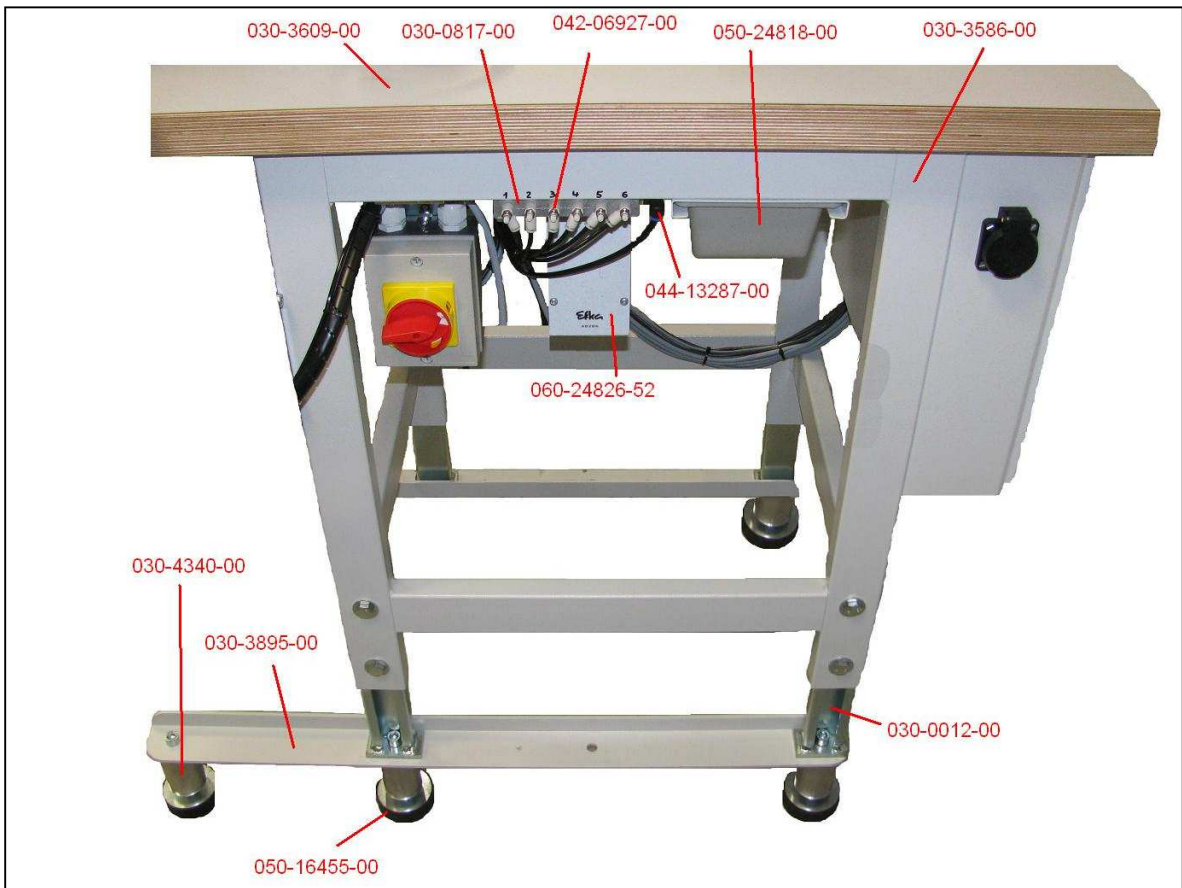
**Tafel 9.0**



**BASS 8040**

**Oberteil - Montage**

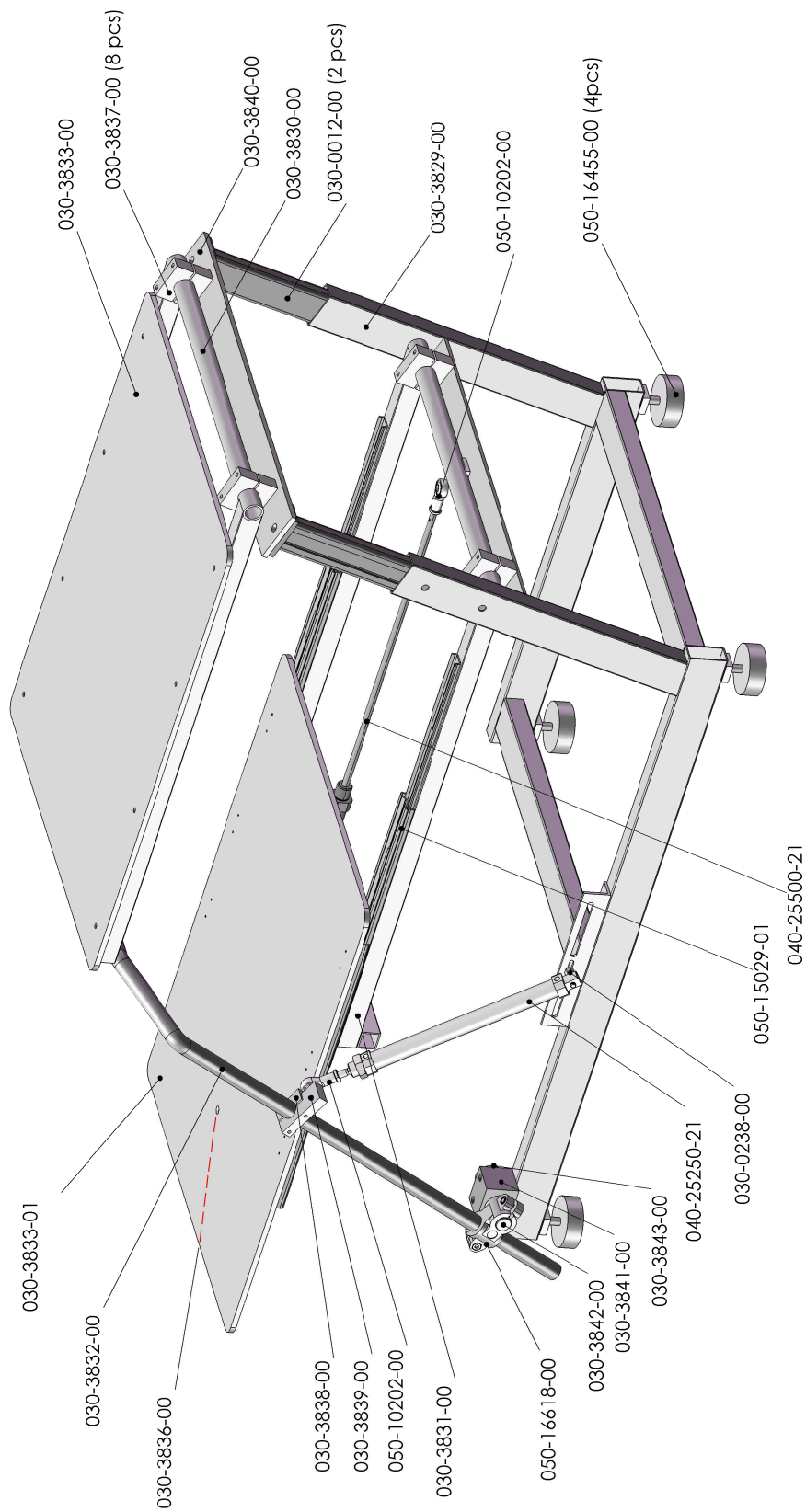
**Tafel 10.0**



**BASS 8040**

**Tischteile**

**Tafel 11.0**



**BASS 8040**

**Stapler**

**Tafel 12.0**



