




<i>Manufacturer</i>	GHIDINI BENVENUTO s.r.l.
<i>Product</i>	Ironing table – <b>AMBRIA</b>
<i>Year</i>	2005
<i>Certification</i>	

## CONTENTS

1	INTRODUCTION	10	HAZARDOUS USE
2	GENERAL DESCRIPTION	11	6 OVERALL DIMENSIONS AND DRAWINGS
3	MACHINE IDENTIFICATION	12	MAINTENANCE PROCEDURES
4	TECHNICAL FEATURES	13	DISPOSAL
5	MACHINE COMPONENTS	14	HOW TO ORDER SPARE PARTS
6	MACHINE UNPACKING AND INSTALLATION	15	HANDLING AND TRANSPORT
7	INSTRUCTIONS FOR USE	16	WARRANTY
8	TROUBLESHOOTING AND SOLVING	17	CONFORMITY DECLARATION
9	PRECAUTION		

## 1 INTRODUCTION

The present user's and maintenance manual refers to the ironing table "AMBRIA".

It is possible to receive the latest release from our Technical Commercial Department or by visiting our website [www.ghidini-gb.it](http://www.ghidini-gb.it).

The present user's and maintenance manual contains important information for the operator's health safeguard and safety.

This manual has to be read and kept carefully, in order to be always at the operator's disposal in case of need.

Ghidini s.r.l. cannot be held liable for any damage to things or injury to persons caused by improper use of the machine in contrast with these instructions.

Any possible modifications effected on the components of the machine or its different use without prior written authorization by Ghidini s.r.l., relieve the latter of injury to persons and / or damages to things, voiding any warranty bindings, as well.

## 2 GENERAL DESCRIPTION

The ironing table AMBRIA is completely self-contained and doesn't require any supporting equipment for its operation.

This machine uses an external power supply for its operation.

The machine features a broad universal ironing board and (on request) a sleeve shape with vacuum (both of which are padded and electrically heated), as well as a garment tray, a control panel to adjust the board temperature and to operate the different work stations, a professional steam iron, a built-in boiler with automatic water feeding and an automatic pressure control. Furthermore, it is possible to install on request a steam-air gun, a heated egg shape and a stainless steel spotting shape.

The operation is very user-friendly and efficient, thanks to its control by pedal.

## 3 MACHINE IDENTIFICATION

A tag placed on one side of the machine indicates the type, serial number, year of construction and the voltage.

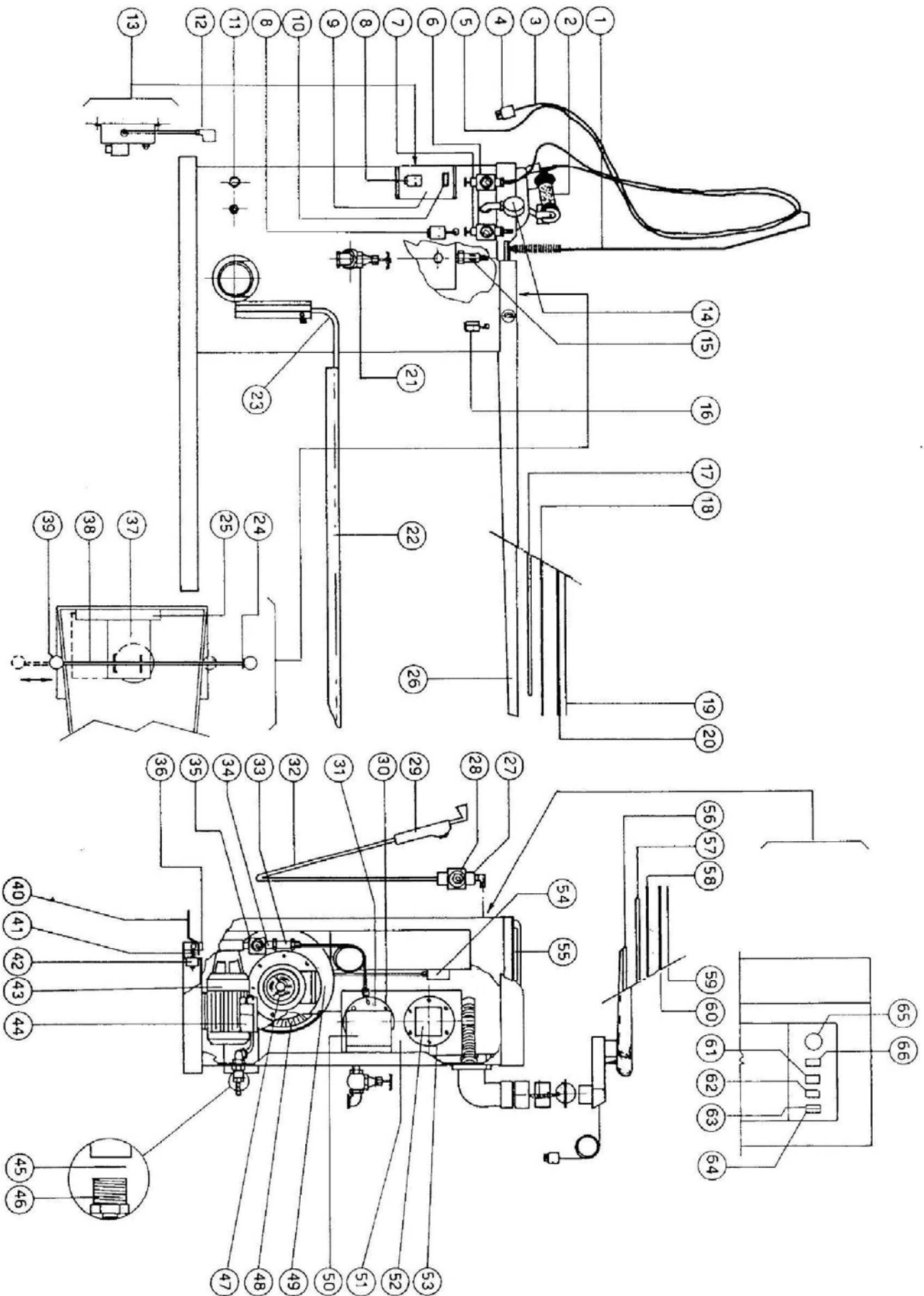
## 4 TECHNICAL FEATURES

Power supply	230V – 1ph / 50 Hz 230-400V – 3ph / 50 Hz			
Power consumption	Boiler	Steam iron	Sleeve shape	Table
	3,3-3,9-4,8 Kw	0,83 Kw	0,14 Kw	1 Kw
Vacuum motor	0,6 Hp			
Pump motor	0,5 Hp			
Steam pressure	2,6 bar			
Steam consumption	2 ÷ 10 Kg/h			
Sound intensity level	< 70 dB(A)			
Working temperature	+ 5 ÷ + 80 °C			
Working humidity	90 % max.			
Storing temperature	- 20 ÷ + 50 °C			
Net dimension	1550 x 550 x 950 mm.			
Net weight	87 Kg			
Overall dimensions (packaging included)	1520 x 580 x 1000 mm			
Gross weight (packaging included)	110 Kg			

**WARNING:** The machine must not be supplied with different voltages than those indicated on the table.

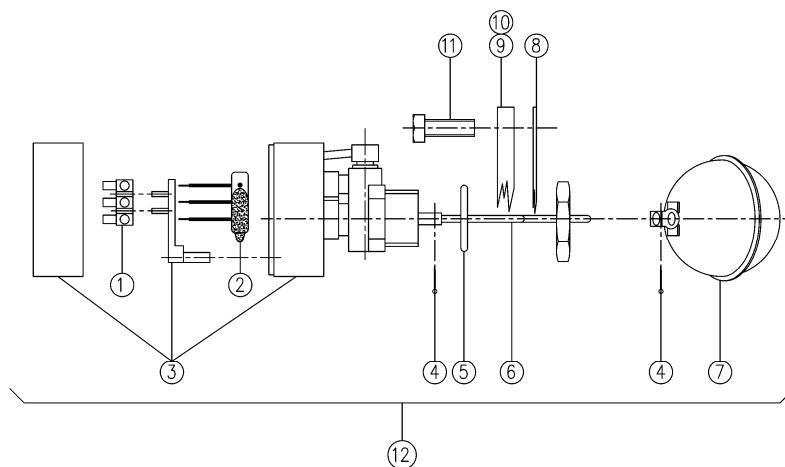
## 5 MACHINE COMPONENTS

The following are the main machine components:



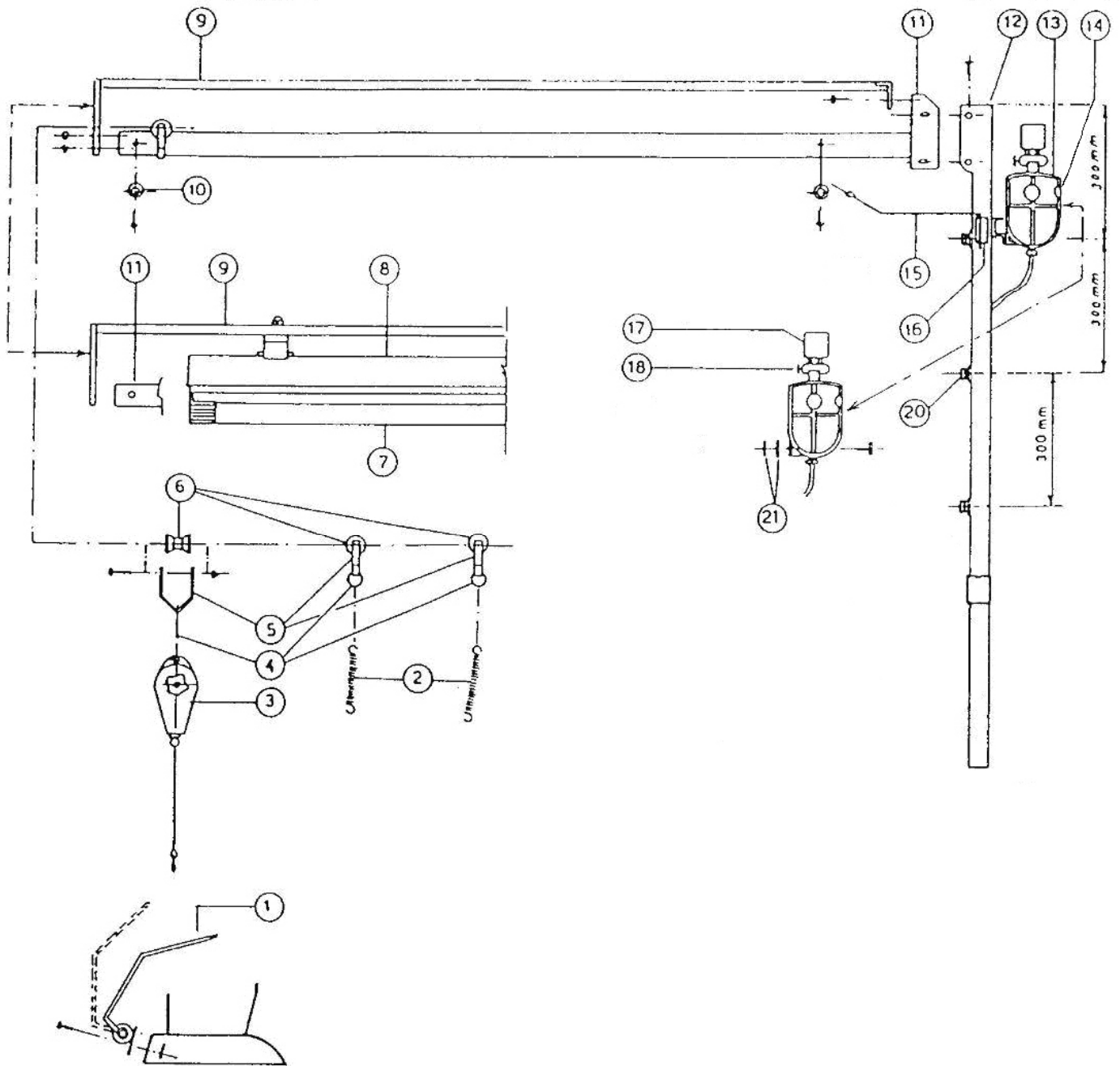
Pos.	ARTICLE	DESCRIPTION	Pos.	ARTICLE	DESCRIPTION
1	534269	Antenna for cable	34	39B036	Water solenoid valve
2	Z01L10	Steam iron type U	35	39H038	Coil for water solenoid valve
3	Z23C00	Electric cable	36		
4	43H009	Iron plug by Ilme	37	173329	Plate out of stainless steel
5	07A001	Steam tube	38	184466	Rod for stainless steel plate
6	39H043	Coil for steam iron solenoid valve	39	52C003	Knob
7	39B012	Steam solenoid valve for iron	40	175103	Vacuum pedal
8	43G007	Iron socket by Ilme	41		
9	173441	Small control case for 2nd iron fitting	42	43D002	Vacuum micro-switch
10	43A020	2nd iron switch	43	42B011	Water pump 230V / 50Hz
11		Power supply inlet	44	42G021	Pump condenser MF 10
12	301016	Connector	45	174356	Water filter
13	Z18M00	Complete fitting for second iron	46	36E006	Hose holder Ø12mm
14	35A004	Pressure gauge	47	42A002	Vacuum motor 230V / 50-60Hz
15	38S001	Safety valve	48	42H002	Vacuum fan Ø180x72
16	43G006	Socket for heated shape by Ilme	49	340017	Vacuum fan wheel box
17	213123	Table heater 1000 Watt	50	172102	Safety cover
18	161020	Perforated plate for universal table	51	202128	Boiler
19	274103	Padding and cloth for maxi table	52	E 02	Automatic level control
	274123		53	244236	Flange gasket Ø135mm
20	Z27P31	Padding and cloth for universal table	54	45G001	Pressure switch 2 ÷ 5,5 bar
21	37A010	Gate valve for boiler exhaust	55	25A001	Iron rest out of silicone
22	274203	Cloth for garment tray	56	340019	Sleeve shape
23	175005	Garment tray	57	213134	Sleeve shape heater 140 W
24	161037	Stainless steel rail	58	173323	Sleeve shape plate
25	24A011	Or-ring	59		Sleeve shape cloth
26	162114	Universal table	60	Z27P14	Padding and net for sleeve shape
27	39B012	Solenoid valve for steam gun	61	43A020	Sleeve shape switch
28	39H043	Coil for steam gun solenoid valve	62	43A014	Iron switch
29	Z07A00	Steam gun	63	43A043	Main switch
30	244236	Flange gasket Ø135mm	64	43A016	Boiler warning light
31	212061	Boiler heater 3,9 kW	65	45A010	Table thermostat
	212060	Boiler heater 3,3 kW	66	43A046	Voltage warning light
	212063	Boiler heater 4,8 kW	67	43A014	Boiler switch
32	07A002	Steam tube out of silicone	68	43A016	Water warning light
33	38W001	Check valve			

### AUTOMATIC LEVEL CONTROL



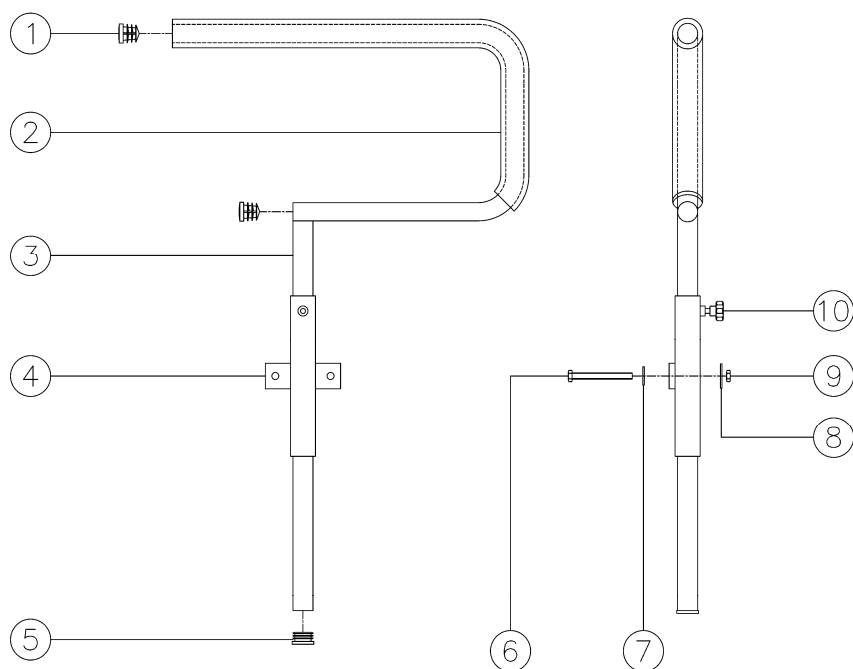
Pos.	ARTICLE	DESCRIPTION	Pos.	ARTICLE	DESCRIPTION
1	43J001	Clamp	7	49G001	Ball
2	49D014	Microswitch	8	244236	Flange gasket
3			9	183270	Flange Ø135
4	51P007	Split pin Ø2 x 20	10	183273	Flange Ø135 with ISPEL certification
5	24E003	Level gasket	11	50A016	Screw M10 x 25 ASTM-A193-B7
6	184318	Supporting floating rod	12	49A002	Complete automatic level

## IRON AND LIGHTING RAIL



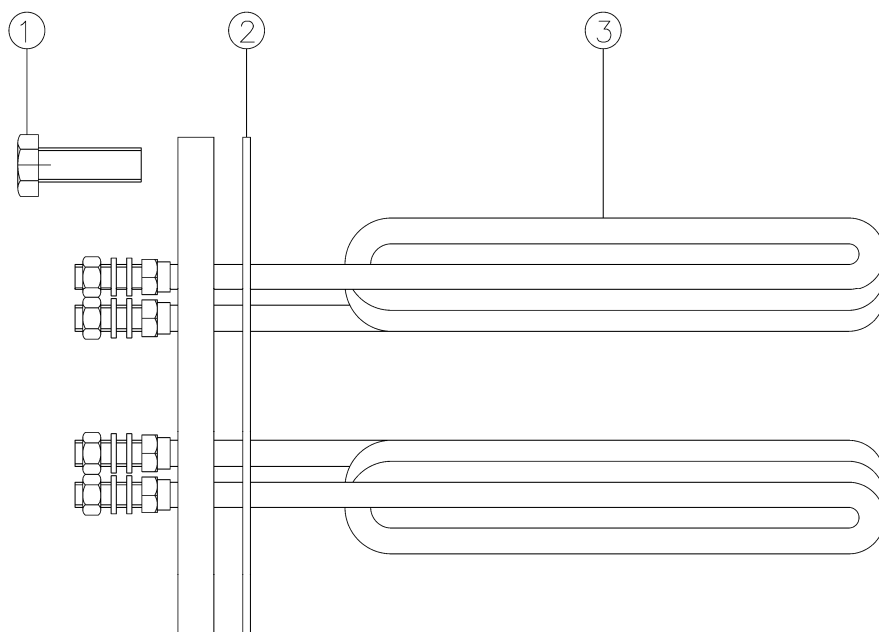
Pos.	ARTICLE	DESCRIPTION	Pos.	ARTICLE	DESCRIPTION
1	Z08M00	Iron support fitting	14	Z75010	Insulator for condense vessel
2	534264	Spring	15	174520	Accessory holder
3	43A001	Balancing device	16	174521	Bracket for accessory holder
4	51X010	Ring	17	39H043	Coil for steam iron solenoid valve
5	174022	Bracket	18	39B012	Steam iron solenoid valve
6	56B002	Complete wheel	19	175108	Supporting bracket for condensation separator
7	43C009	Lamp 36W - 230V	20	46R005	Cable holder
8	43C007	Complete upper light fixture	21	244244	Gasket 30x7x3
9	174084	Front lamp support	22	43K005	Switch box
10	22A002	Bumper foot	23	43A003	Switch
11	173304	Track L150	24	43H001	Plug
	173025	Track L178	25	174017	Spacer L35
12	173028	Upper column	26	174016	Spacer L43
13	202052	Condensation separator	27	173011	Bottom column

### LEG DIVIDER (SHORT TYPE)



Pos.	ARTICLE	DESCRIPTION	Pos.	ARTICLE	DESCRIPTION
1	22K021	Cap	6	50A029	Screw M6x60
2	07A007	Isolating rubber tube	7	50J009	Washer 6x18
3	173035	Leg divider	8	50J008	Washer 8x24
4	173027	Leg divider support	9	51A003	Nut M6
5	22K025	Cap 20 x 20	10	52A004	Handwheel

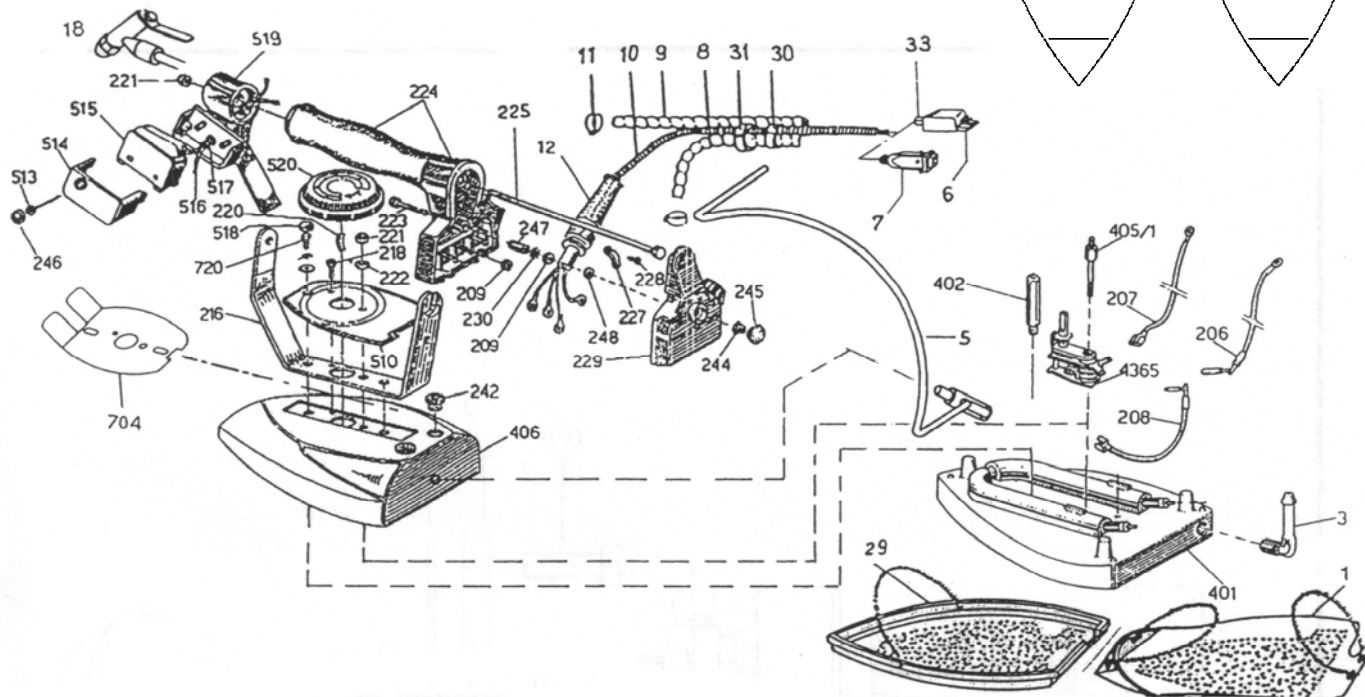
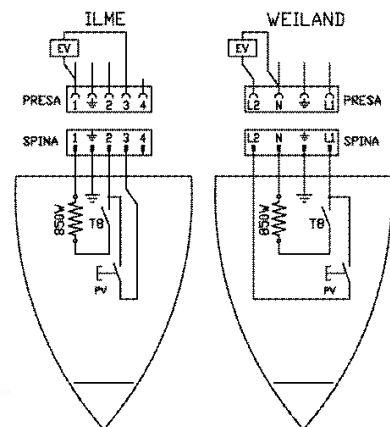
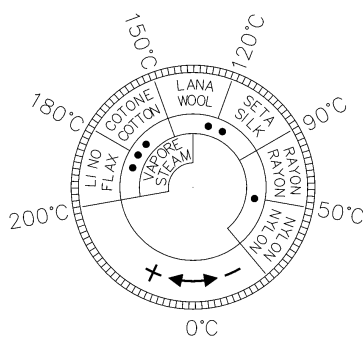
### HEATER FLANGE Ø130



Pos.	ARTICLE	DESCRIPTION	Pos.	ARTICLE	DESCRIPTION
1	50A016	Screw M10x25	3	212061	Boiler heater 3,9 kW
2	244236	Gasket		212060	Boiler heater 3,3 kW
				212063	Boiler heater 4,8 kW

## STEAM IRON TYPE "U"

TECHNICAL FEATURES	
Power supply	220V 50 Hz
Iron heater	0,830 Kw
Working temperature	+ 5 ÷ + 80 °C
Working humidity	90 % max.
Storing temperature	- 20 ÷ + 50 °C
Net weight	1,8 Kg



Pos.	ARTICLE	DESCRIPTION	Pos.	ARTICLE	DESCRIPTION
4365	45A005	Thermostat with thermofuse	224	222056	Handle
720	184453	Fixing screw for body	223	184457	Fixing screw for handle
704	253297	Hand protection plate	222	514057	Fixing nut for body
520	224217	Hand wheel	221	514056	Nut for handle rod
519	173236	Micro-switch support	220	534288	Hand wheel spring
518	22K038	Cap for body screw	218	184455	Fixing screw for body
517	224217	Sheathing	216	172057	Handle support
516	304284	Micro-switch wires	209	514055	Nut for terminal board
515	43D009	Micro-switch complete of wires and sheathing	208	304282	Electrical wiring for thermostat heater
514	43K007	Micro-switch case	207	304281	Electrical wiring for thermostat terminal board
513	184451	Micro-switch screw	206	304280	Electrical wiring for heater terminal board
510	264350	Plate	33	224255	Cable holder for plug
406	253255	Body	31	224260	Wire clamp
405/1	174020	Thermostat column	30	224215	Little spring
402	174019	Body column	29	Z23E01	Stiffened teflon shoe
401	253254	Plate with heater	18	25A002	Water spray gun
248	184449	Isolating washers	12	224210	Cable holder
247	174018	Earth spacer	11	51X005	Clip
246	22K037	Micro-switch cap	10	Z23C00	Electrical wire
245	22K036	Nut cap	9	07A002	Silicone tube
244	514058	Nut for rear cover	8	07A001	Rubber tube
242	224245	Rubber cap for wire holder	7	43H009	Plug by Ilme
230	184448	Indented washer	6	43H002	Plug by Wieland
229	222133	Rear cover	5	174009	Jointed iron hanger
228	184450	U-bolt screw	3	364297	Cable hose
227	174353	Fixing U-bolt	1	Z23E00	Teflon shoe
225	183255	Handle rod			

## 6 MACHINE UNPACKING AND INSTALLATION

---

**ATTENTION:** The unit must be installed, opened and repaired by fully qualified technicians only.

### 6.1 UNPACKING

Find the most suitable place where to put the machine, then remove the packaging. Make sure that the machine has not been damaged during the transport and the storage.

The packaging material does not require any special precautions for its disposal, for it is not dangerous or polluting at all. Please refer to the local regulations for its disposal.

### 6.2 MACHINE INSTALLATION

The machine has not to be anchored to the floor.

For a correct use and operation, as well as for an easy maintenance, leave enough free space around the machine.

Do not place the machine in dangerous and/or explosive/inflammable places.

### 6.3 ELECTRICAL WIRING

The electrical wiring must be carried out as indicated in the drawing. Check that the supply voltage and the frequency correspond to those indicated on the rating plate. The dimensions of the supply cable must suit the machine absorption and comply to the current regulations. It is advisable to install a switch with fuses or a magnetothermal one. Put the cable in the cable passage hole, then tighten. Connect the cable to the terminals of the feeder line on the control panel, as shown on the drawing of the present manual. Check the rotation direction of the motors; if not correct, invert two of the three input phases with each other.

**ATTENTION:** After having carried out all the electrical connections, make sure that the cables are protected against any possible hits and are suitably fixed and isolated.

### 6.4 WATER CONNECTION AND BOILER EXHAUST

Connect the water pipes to the cable passage Ø12 of the machine. Install an on-off valve and a filter on the water inlet, which has to be closed each evening, in order to avoid any water sucks into the boiler. Connect the gate valve of the boiler exhaust (with a G 3/8" threading) to the drainage system.

## 7 INSTRUCTIONS FOR USE

---

### 7.1 PUTTING INTO OPERATION

- The whole unit can be used, opened and repaired by qualified technicians only.
- It is forbidden to use the machine if flooded by liquids or in particularly aggressive or explosive/inflammable places.
- Do not ignore the dangers for the operator's health and follow the hygienic and safety regulations.
- Check that the electrical wiring is carried out correctly according to the current regulations, and that the fuse blocks are closed and complete of fuses.
- Make sure that the machine is intact.

### 7.2 USE

- Open the on-off valve of the water supply.
- Turn on the main switch of the machine.
- Press the boiler button.
- The warning light of the water supply switches on automatically (the water starts running into the boiler).
- Once the water has reached the required level the relevant warning light switches off automatically, whereas the one of the boiler heater turns on.
- After a few minutes the boiler reaches the working pressure of 2.6 bar (check the pressure on the pressure gauge), the relevant warning light switches off automatically.
- The generator is now ready to supply steam.
- Adjust the board temperature by means of the thermostat wheel.
- Wait until the boards reach the required temperature.
- Push the pedal to put the air suction on boards into operation.
- At the end of the work, turn off the table by means of the relevant buttons.

### 7.3 USE OF THE SLEEVE SHAPE

- By drawing the sleeve shape towards the ironing surface, the valve on the inside will open automatically. Push the pedal for the vacuum operation.

### 7.4 USE OF THE STEAM IRON TYPE "U"

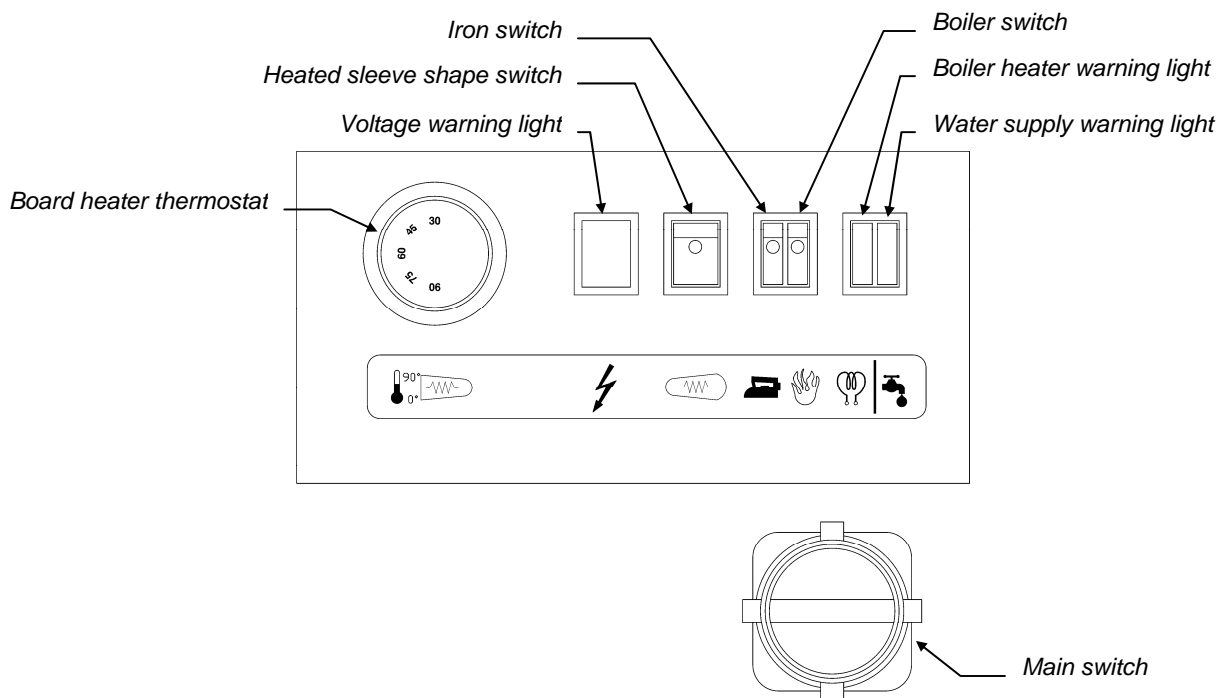
- Turn on the iron switch.



- Switch on the iron a few minutes before you start working, until the soleplate has reached the adjusted temperature.
- In case the temperature of the soleplate has to be kept very high, we recommend to apply a Teflon® shoe in order to prevent burns of the garment.

## 7.5 USE OF THE STEAM-AIR GUN

- Place the garment to be treated onto the spotting shape, making sure that it lies exactly on the vacuum part.
- Push the vacuum pedal; by turning the condensation-jet of the gun first towards a tank until only steam comes out.
- Draw the gun closer to the part to be treated, by pushing at the same time both the vacuum and the steam pedal.
- Once the stain is dissolved, dry the treated part by pushing simultaneously the vacuum pedal and air-button on the gun.



## 8 TROUBLESHOOTING AND SOLVING

The following diagnostic table indicates the main irregularities, which can occur, the probable causes and their possible solutions

In case of doubts and/or of problems, which can't be solved, do not attempt to disassemble parts of the machine for the troubleshooting, but contact our Technical Department or the Ghidini-reseller, instead.

DIAGNOSTIC TABLE		
PROBLEMS	POSSIBLE CAUSES	SOLUTIONS
No suction on the boards	Micro-switch of the pedal defect	<i>Replace the micro-switch</i>
The boards do not heat up	Thermostat defect	<i>Replace the thermostat</i>
The machine doesn't turn on	Main switch not on	<i>Check if the main switch is on and the fuses.</i>
	Switch turned off	<i>Turn on the switch</i>
No steam is coming out	Iron or boiler switch not turned on.	<i>Turn the switches on</i>
The water warning light is turned on and the water pump keeps on running without stopping	No water is streaming into the boiler	<i>Check if the water cock is open.</i>
		<i>Check the presence of pressure inside the water mains.</i>
		<i>Check if the water filter is obstructed.</i>
The heater warning light is always switched on and the boiler doesn't reach the working pressure	Leak on the boiler exhaust	<i>Check if the gate valve of the boiler exhaust is well closed.</i>
	Burnt heater or covered with scale	<i>Check the heater condition.</i>

**ATTENTION:** if the safety valves is released, switch the boiler immediately off and contact a qualified technician. Do not block the exhaust and do not underestimate the problem, as there could be risk of explosion.

## 9 PRECAUTION

Read carefully the instructions and the risks related to the use of an ironing table. The operator has to know its working functions and must clearly understand its dangers with the help of the manual.

If the machine features a steam iron, do not leave it switched on too long and place it always on the relevant iron rest. The ironing boards and the soleplate of the iron remain hot for some minutes after their switching-off, please pay therefore attention to the risks of burns and do not put objects on the table until its complete cooling-down.

### Main electrical supply

Prior to carrying out any inspection or service on the machine, it is necessary to disconnect it from the main electrical supply. Make sure, that nobody can reconnect it during the technical service.

Every installed electrical or electronic equipment must be earthed.

### Inflammability

Adopt all the necessary precautions to avoid any direct contact of the machine with hot materials or flames. Put fire extinguishers near the machine for an immediate intervention in event of fire.

### Pressure / Steam

Before each intervention, switch off the boiler first and check that there are no residual pressures inside the boiler or in any branch of the hydraulic circuit, as they could cause steam or product spurts, in case of disassembly of fittings or other components.

### Noise

The machine's noise level is not very high, as it remains under 70dB (A).

## 10 HAZARDOUS USE

The conformity verification, according to the essential safety rules and to the provisions of the machine directive, has already been carried out by filling out the specially provided checking lists that are included in the technical file.

The checking lists are of two kinds:

- List of dangers (drawn from EN 1050 referring to EN 292)
- Application of the main safety features (Machine Directive– appendix. 1, part 1)

**The dangers described in the following have not been completely removed, but they have been deemed to be acceptable:**

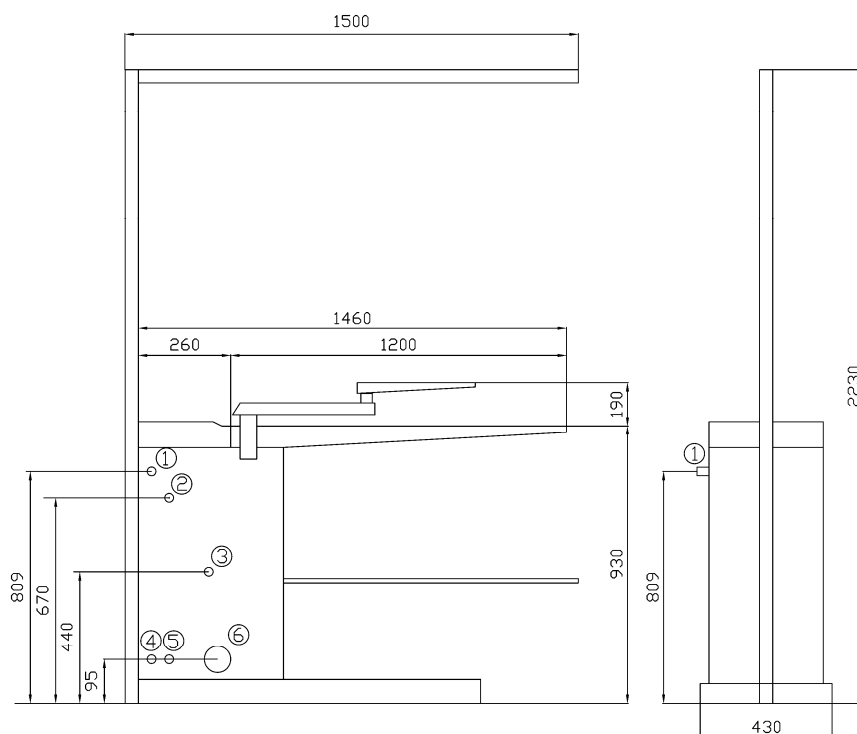
- During the maintenance operation there could be some steam jets at low pressure, (maintenance operation must therefore be carried out by using suitable protection devices)
- The user must provide for a protection against direct and indirect contacts.

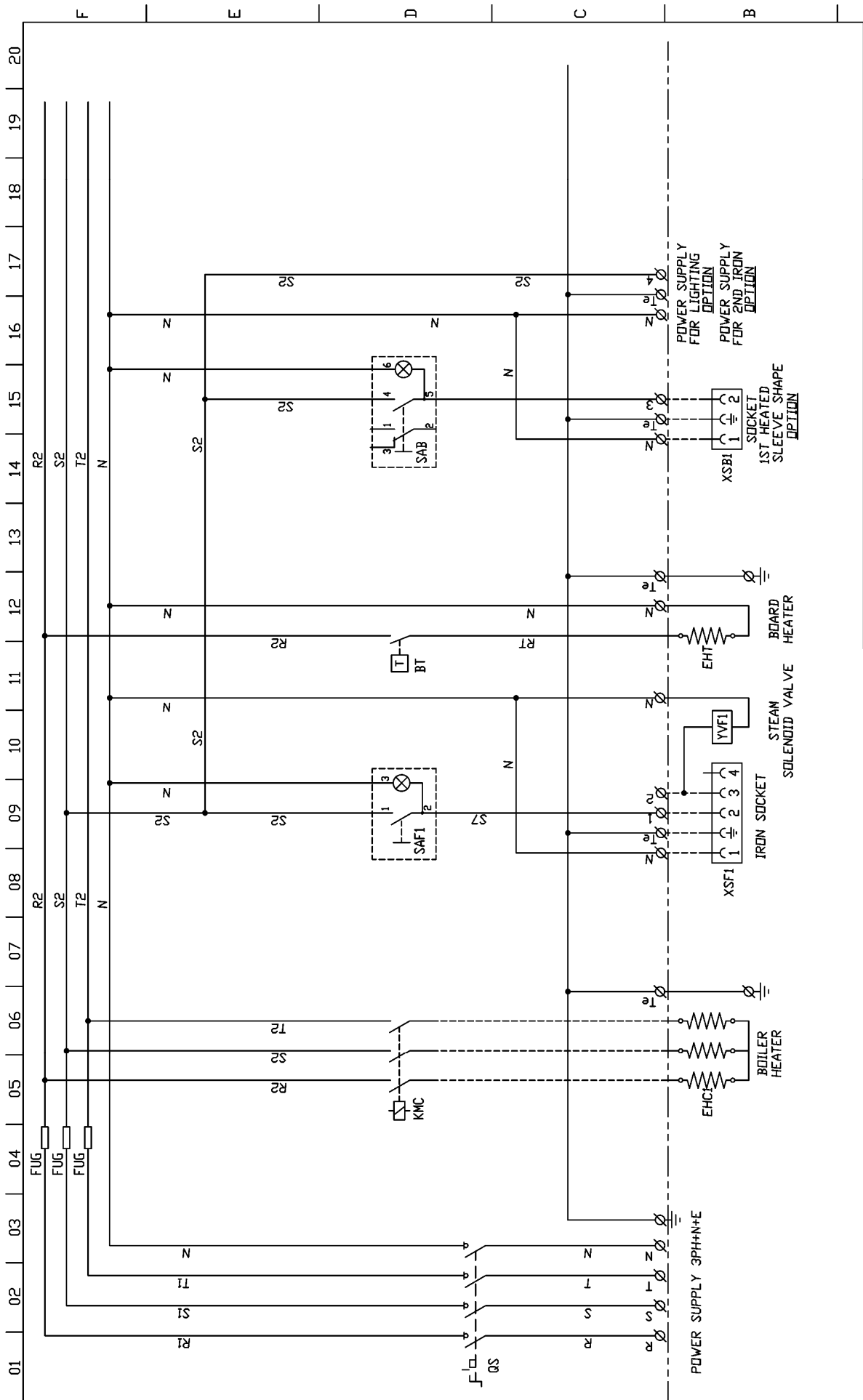
## 11 6 OVERALL DIMENSIONS AND DRAWINGS

1 – Steam inlet  
2 – Condensation return

3 – Boiler exhaust  
4 – Power supply

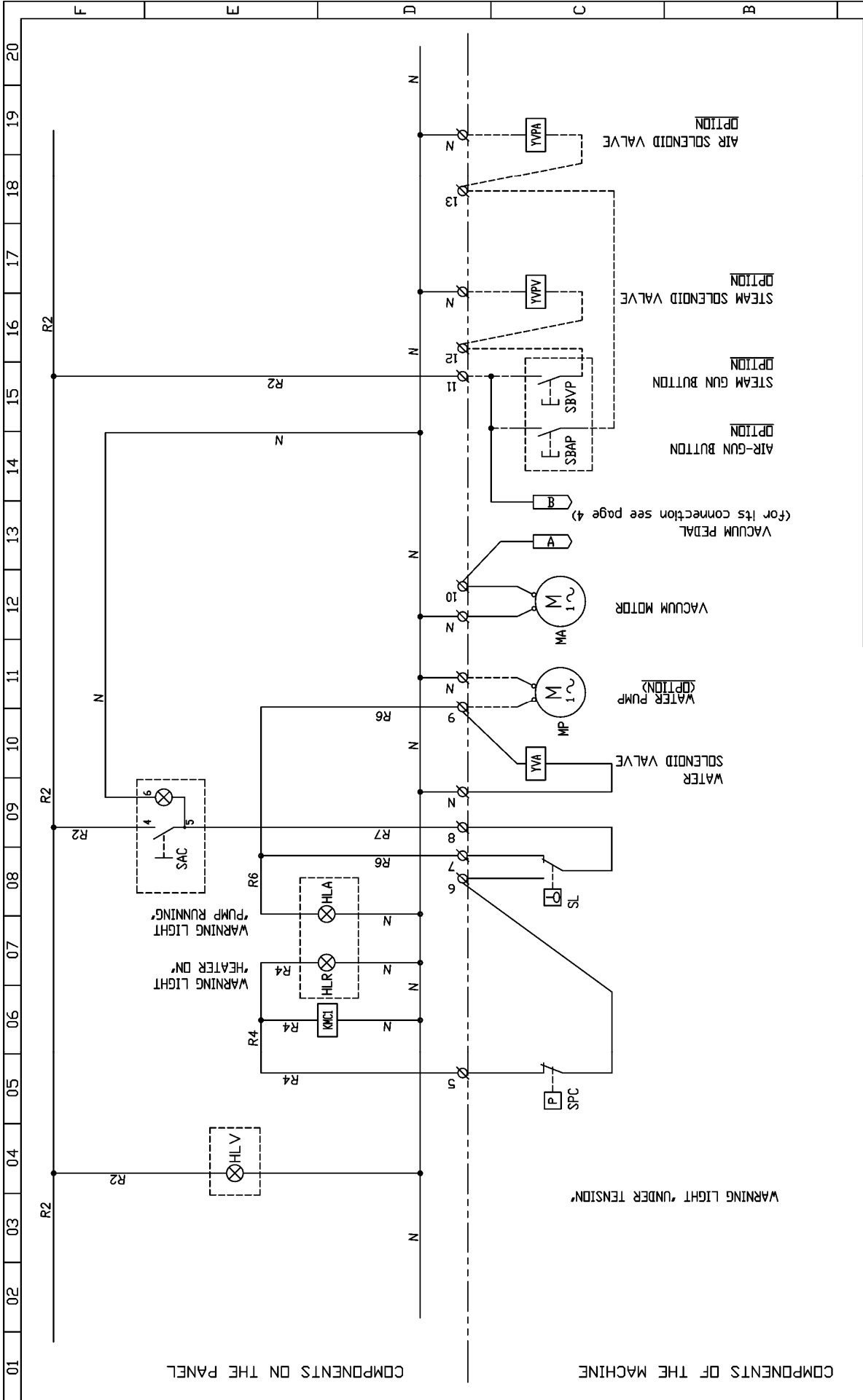
5 – Water inlet  
6 – Vacuum exhaust





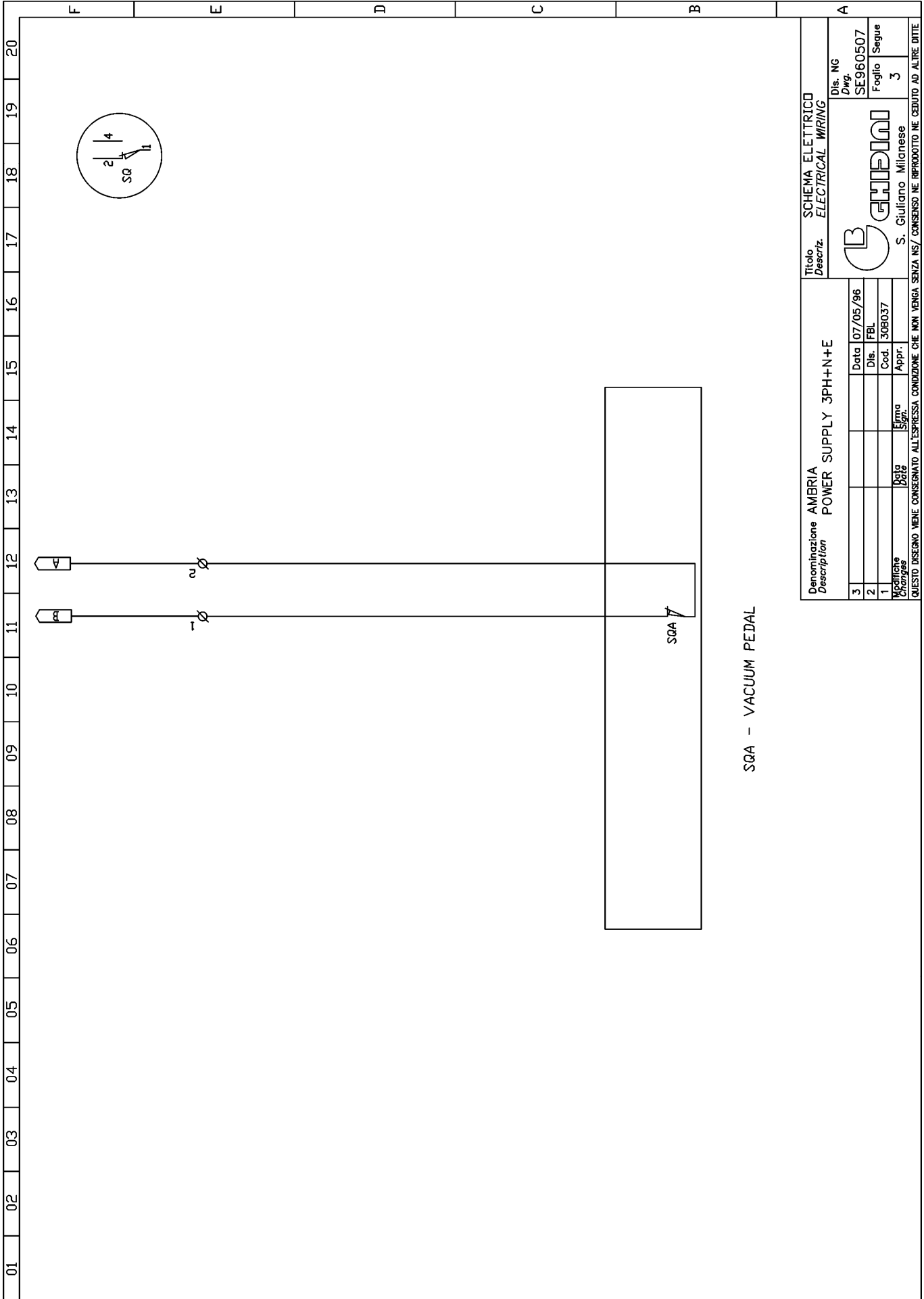
Denominazione Description		AMBRIA POWER SUPPLY 3PH+N+E	
Titolo Descriz.			
SCHEMA ELETRICO ELECTRICAL WIRING		Dis. NG Dwg. SE99062B	
Foglio 1		Segue 2	
S. Giuliano Milanese			
GHIARDINI			
QUESTO DISEGNO VIENE CONSERVATO ALL'ESPRESSA CONDIZIONE CHE NON VENGA SENZA NS/ CONSENSO NE RIPRODOTTO NE CEDUTO AD ALTRE UTILE			
3	Data	28/06/99	
2	Dis. LC		
1	Cod.	309037	
Modifiche Changes	Data	Disegn.	Appr.

QS - SELECTOR In=40A  
 FUG - FUSE 20A GI  
 KNC1 - CONTACTOR  
 SAB - HEATED SLEEVE SHAPE SWITCH (OPTION)  
 SAF1 - SWITCH FOR 1ST IRON



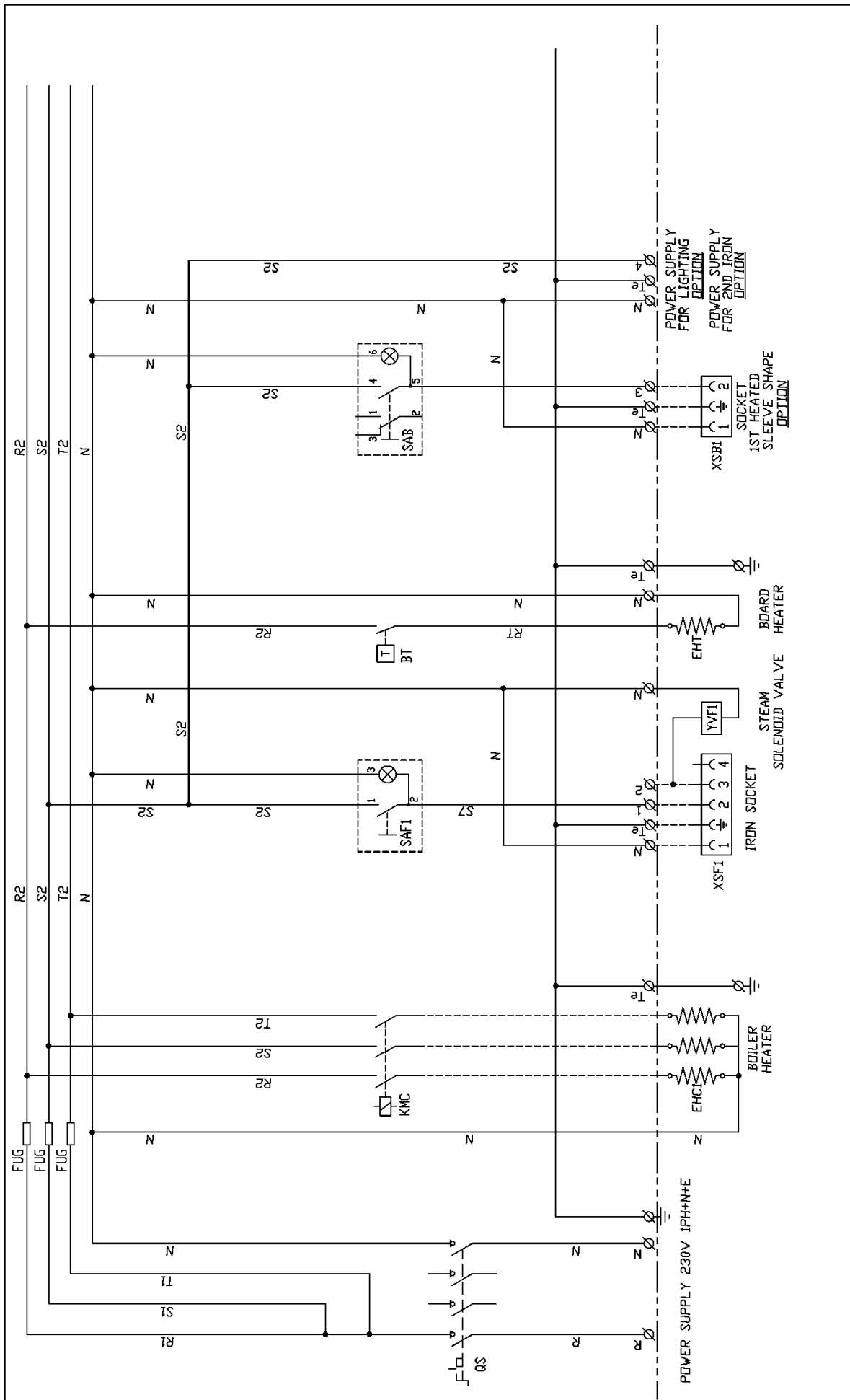
Denominazione Description		AMBRIA POWER SUPPLY 3PH+N+E	
Titolo Descriz.		SCHEMA ELETTRICO ELECTRICAL WIRING	
Dis. NG Dwg.		SE990628	
Foglio Sheet		2	
Segue Continues		3	
Date		28/06/99	
Dis. LC			
Cod.		308037	
Firma Signature			
Appr. Approval			
QUESTO DISEGNO VIENE CONSERVATO ALL'ESPRESSIONE CONDIZIONE CHE NON VENGA SENZA NS/ CONSENSO NE RIPRODOTTO NE CEDUTO AD ALTRE DITTE			

SAC -- BOILER SWITCH  
 HLV -- WARNING LIGHT "UNDER TENSION"  
 SPC -- BOILER PRESSURE-SWITCH  
 KWC1 -- CONTACTOR CONTROLLING THE BOILER HEATERS  
 SL -- BOILER FLOATER



SQA - VACUUM PEDAL

Denominazione Description		AMBRIA POWER SUPPLY 3PH++N+E	
3	Data	07/05/96	
2	Dis.	FBL	
1	Cod.	308037	
Modifiche Changes		Date	Signa. Appr.
QUESTO DISEGNO VIENE CONSERVATO ALL'ESPRESSA CONDIZIONE CHE NON VENGA SENZA NS/ CONSENSO NE RIPRODOTTO NE CEDUTO AD ALTRE DITTE			
Titolo Descriz.		SCHEMA ELETTTRICO ELECTRICAL WIRING	
		Dis. NG	SE960507
		Foglio	3
		S. Giuliano Milanese	
		<b>GHIBINI</b>	



Denominazione Description		AMBRIA POWER SUPPLY 230V 1PH+N+E	
Titolo Descriz.		SCHEMA ELETRICO ELECTRICAL WIRING	
3	Data	28/06/99	Dis. NG
2	Dis. LC		SE990628
1	Aggiornato	16/03/11	Foglio
	Modifiche	T&P	Segue
	Disegnato	308045	1
	Appr.		2
QUESTO DISEGNO VIENE CONSEGNATO ALL'ESPRESSIONE CONDIZIONE CHE NON VENGA SENZA NS/ CONSENSO NE RIPRODOTTO NE CEDUTO AD ALTRE DITTE			



QS - SELECTOR In=40A  
 FUG - FUSE 20A GI  
 KMC1 - CONTACTOR  
 SAB - HEATED SLEEVE SHAPE SWITCH (OPTION)  
 SAF1 - SWITCH FOR 1ST IRON



## 12 MAINTENANCE PROCEDURES

---

In case of irregularities or malfunctioning, please contact the service technician for the relevant checks.

**Periodically, it is necessary to carry out the following operations:**

OPERATION	Working hours
Boiler discharge (*)	40
Cleaning of the water filter	1500
Cleaning both of boiler and heating elements	2500
Cleaning of the condensation return filter	500

(\*): Discharge the boiler once it has reached 1 bar of pressure, in order to remove any limescale or dirt deposits. When the machine is switched off, open slowly the gate valve of the boiler exhaust. We recommend to carry out this operation before you start working and not in the evening at the end of work, as the fresh water streaming into the boiler is rich in oxygen, increasing during the night the corrosion process inside the drum.

This machine does not require special equipment for check and/or maintenance operations. It is however advisable to use suitable tools and personal protections in compliance with the Italian law by decree 626/94, which have to be in good conditions (Presidential Decree 547/55), in order to avoid any damages to persons or machine components.

**Make sure that the power supply is disconnected prior to any maintenance service and that the whole equipment is cooled down.**

## 13 DISPOSAL

---

During the maintenance on the machine, or in case of its scrapping, please dispose carefully and correctly of any polluting components, according to the local regulations. In case of scrapping, the identification rating plate and any other document have to be destroyed.

## 14 HOW TO ORDER SPARE PARTS

---

Upon the spare parts request, please quote always:

Machine type, serial number, quantity of the requested spare parts, article number (these data can be read on the rating plate or supplied by the technical information of the machine and by the user's and maintenance manual).

For electrical components with a different voltage and frequency than V 230-380 50Hz (data available on the rating plate of the faulty component), specify the right voltage and frequency after having mentioned the article number.

The technical data, the descriptions and pictures included in this manual are not binding.

The manufacturer reserves the right to make any necessary modification without notice or having to up-date the present manual.

## 15 HANDLING AND TRANSPORT

---

Before its shipment, the machine is carefully packed in a carton box. During the shipment and storing of the machine, pay particular attention to the upside indication on the packaging. Upon receipt, please check that the packing is intact and store the machine in a dry place.

## 16 WARRANTY

---

All Ghidini products are guaranteed for a maximum period of 12 months from delivery date as far as material and construction defects are concerned.

**The warranty is extended as follows:**

In case of malfunction of the equipment, please contact your Ghidini reseller, specifying the noticed defect, type, serial number and furthermore the operating conditions of the machine. After having received the equipment or component and after an accurate analysis, Ghidini reserves the right to repair or to replace the product. If the machine is still under guarantee, the Ghidini reseller will carry out the service or replacement at Ghidini's charge. In case the returned goods are not defective, Ghidini reserve the right to charge the customer with the met expenses (shipment, etc.). The present warranty will be declared void, if the machine has been damaged due to improper use, negligence, normal wear, chemical corrosion, installation not according to the provided instructions and to the manufacturer's warnings.

Any modification, tampering and alteration on the machine or its components, carried out without prior written authorization by Ghidini, relieve the latter of any responsibility and annul any warranty obligation. The components subject to normal wear and the perishable ones are not under warranty, as well as everything which has not been previously explicitly indicated, or damages or expenses arising from defects of the same product.

The validity conditions of the guarantee provided by Ghidini are considered implicitly accepted upon purchase of the machine. Any possible changes to or derogations from the present guarantee are only valid prior written authorization by Ghidini.



## 17 CONFORMITY DECLARATION

---

**The Manufacturer :**

GHIDINI  
Company

Via Tolstoj, 24 – 20098 S. Giuliano Milanese (MI)  
Address

+39 -02 -98.24.06.00  
Phone number

**Declares that:**

**The machine:**

Ironing table – AMBRIA

- \* has been designed in compliance with the DIRETTIVE DIRECTIVES OF THE EUROPEAN COMMUNITY COUNCIL referring to machines (98/37/EC) and to low voltage (BT 73/23/CEE).
- \* has been designed, as far as enforceable, in compliance with the following harmonized regulations and technical specifications:  
EN 292-1/2, EN 1050, EN 982, EN 11200, EN 60947, EN 894-1/2.

---

Managing director

Roland Fleischmann

Product manager

Name

GHIDINI S.R.L.

Company



December 2005

Signature

Date



Web site: <http://www.ghidini-gb.it> - E-mail: [sales@ghidini-gb.it](mailto:sales@ghidini-gb.it)