

VETRON

» PARTS LIST

10/2020

STANDARD 5374

- » -2100
- » -3200

© **VETRON | TYPICAL GmbH**

Clara-Immerwahr-Str. 6
67661 Kaiserslautern, Germany

Tel.: +49 6301 320 75-0

Fax: +49 6301 320 75-11

info@vetrontypical.com

www.vetrontypical.com

All rights reserved.

The instructions for use, service instructions, parts lists are protected by copyright. Any reuse of the content outside the copyright is without the written consent of VETRON | Typical GmbH inadmissible and punishable.

VETRON | Typical GmbH is only liable for damage caused by intent or gross negligence on the part of the manufacturer. Moreover, liability is excluded.

Reserve technical changes!

The contents were carefully prepared and checked by the publisher. Due to continuous developments, illustrations, functional steps and technical data may differ slightly.

Updating the documentation

If you have suggestions for improvement or have detected any irregularities, please contact us.

 The documents for the machines can be accessed by logging on <https://www.vetrontypical.com/> downloaded for free.



05	01. GENERAL ADVICE
07	02. OVERVIEW
	HOT AIR WELDING
09	03. HEAD MODULE
	557 150 000
21	04. FRAME MODULE
23	05. POST MODULE
29	06. ELECTRONIC / PNEUMATIC PARTS
39	07. WELDING ACCESSORIES
43	08. TABLE STAND
45	09. INDEX - PARTS OF HOTAIR WELDING

01. GENERAL ADVICE

At the time of printing, all information and illustrations in this document were up-to-date.

Technical changes without prior notice!

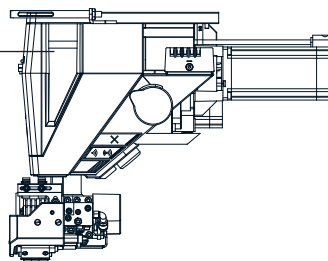


NOTE!

- » Please take note of, we will not be liable for spare parts and accessories, not purchased from us. These parts were neither examined by us, nor released. Consequently, the installation or use of these products can have a negative influence on features and your workflow of the machine.
- » We accept no liability for any damage caused by the use of non-original parts.
- » Parts which are boxed have a underlined number.
These parts have a assembly part number!
- » The part numbers in the box can be seperately ordered.

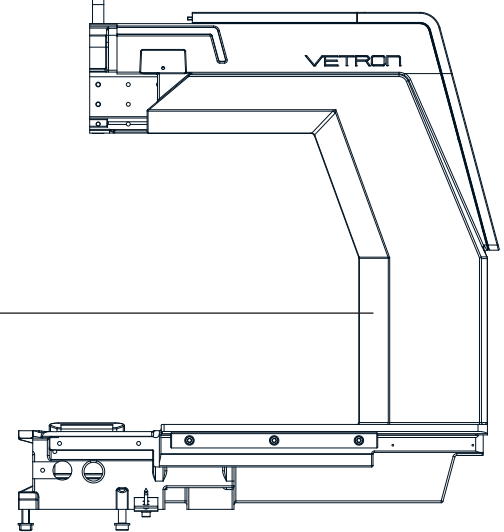
03. HEAD MODULE,

557 150 000
p. 09



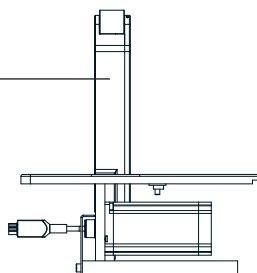
04. FRAME MODULE,

557 013 000 // 557 011 000
p. 21



05. POST MODULE,

559 2980 09 // 559 1328 09
p. 23



06. ELECTRONIC PARTS,

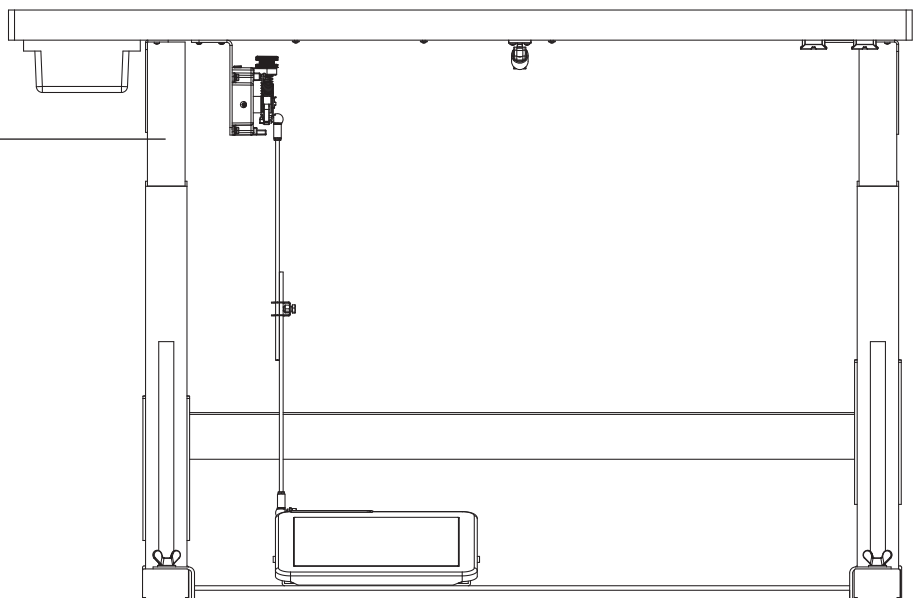
p. 29

07. WELDING ACCESSORIES,

p. 39

08. TABLE STAND,

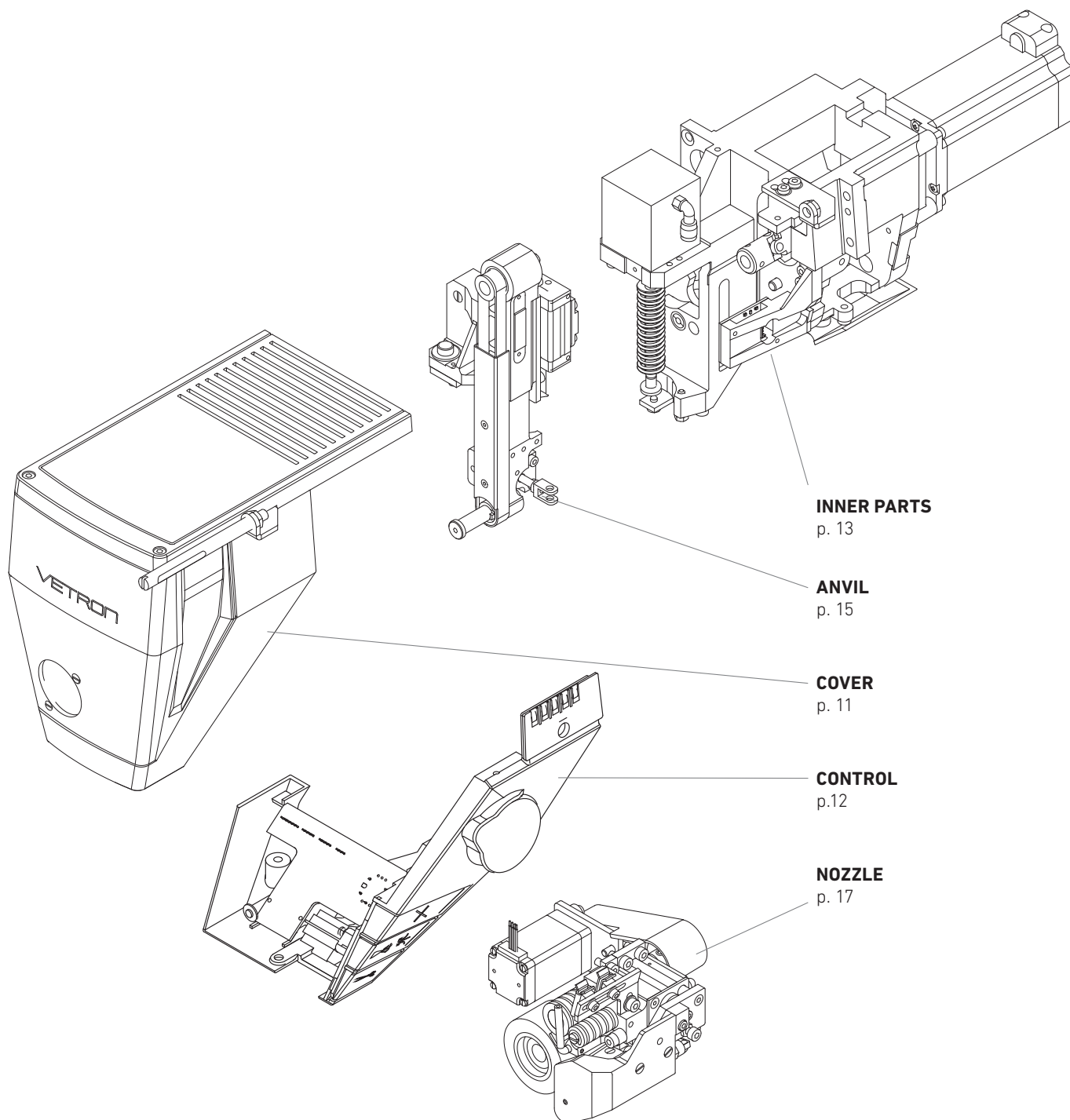
p. 43



10	01. OVERVIEW
11	02. COVER
12	03. CONTROL 559 2080 09
13	04. INNER PARTS
15	05. ANVIL 559 1330 09
17	06. NOZZLE

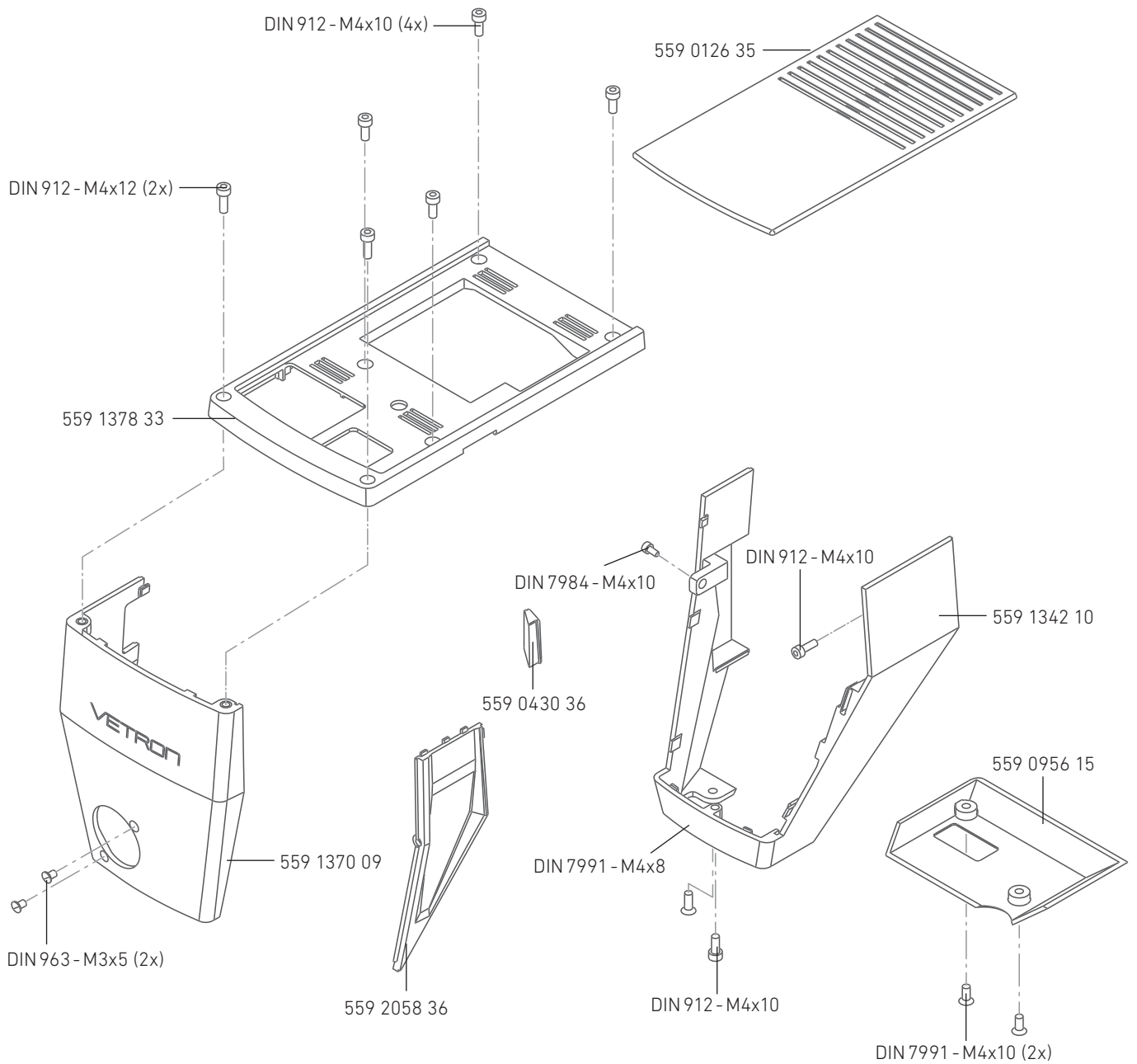
03. HEAD MODULE

01. OVERVIEW



03. HEAD MODULE

02. COVER



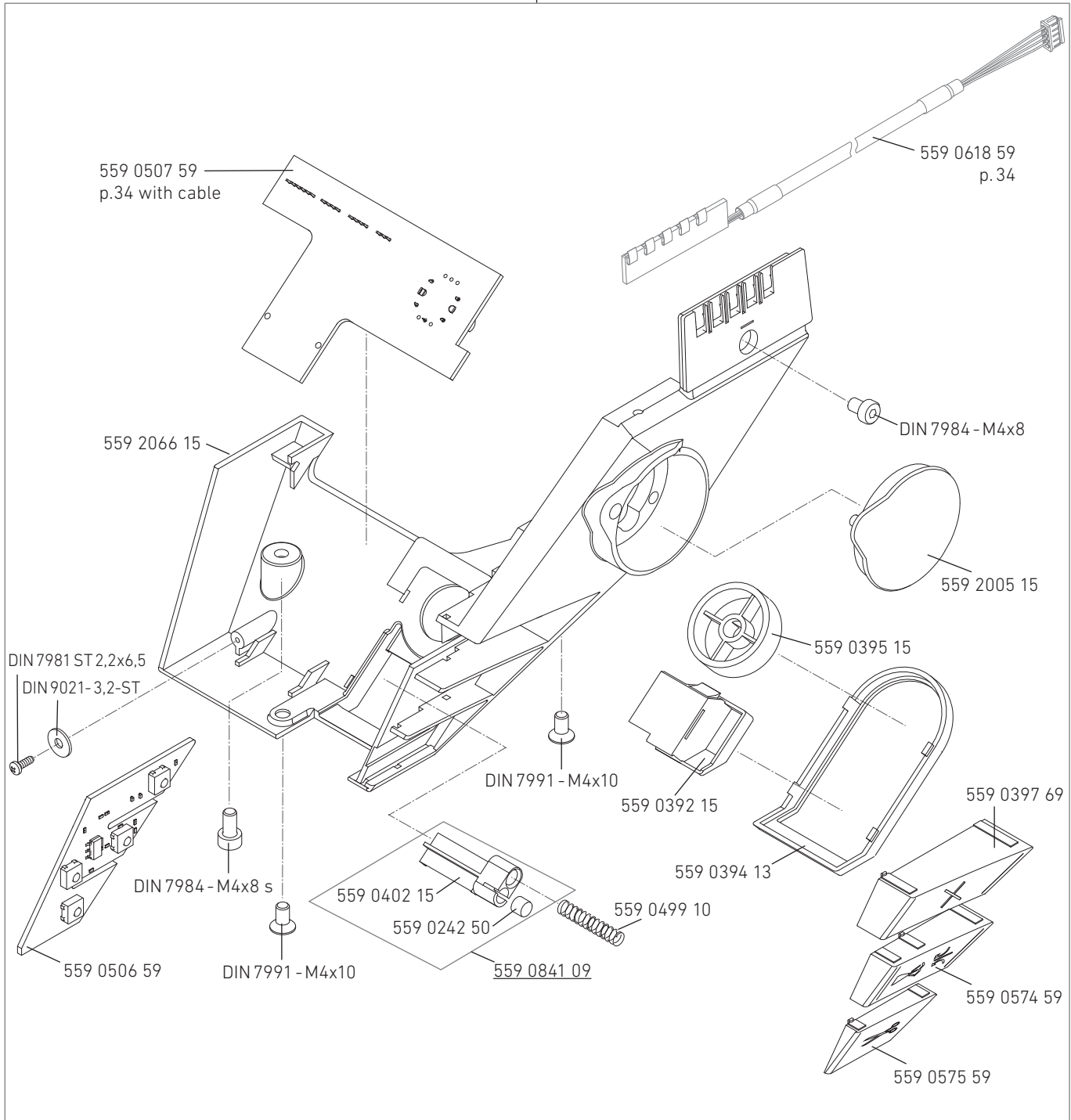
03. HEAD MODULE

03. CONTROL 559 2080 09



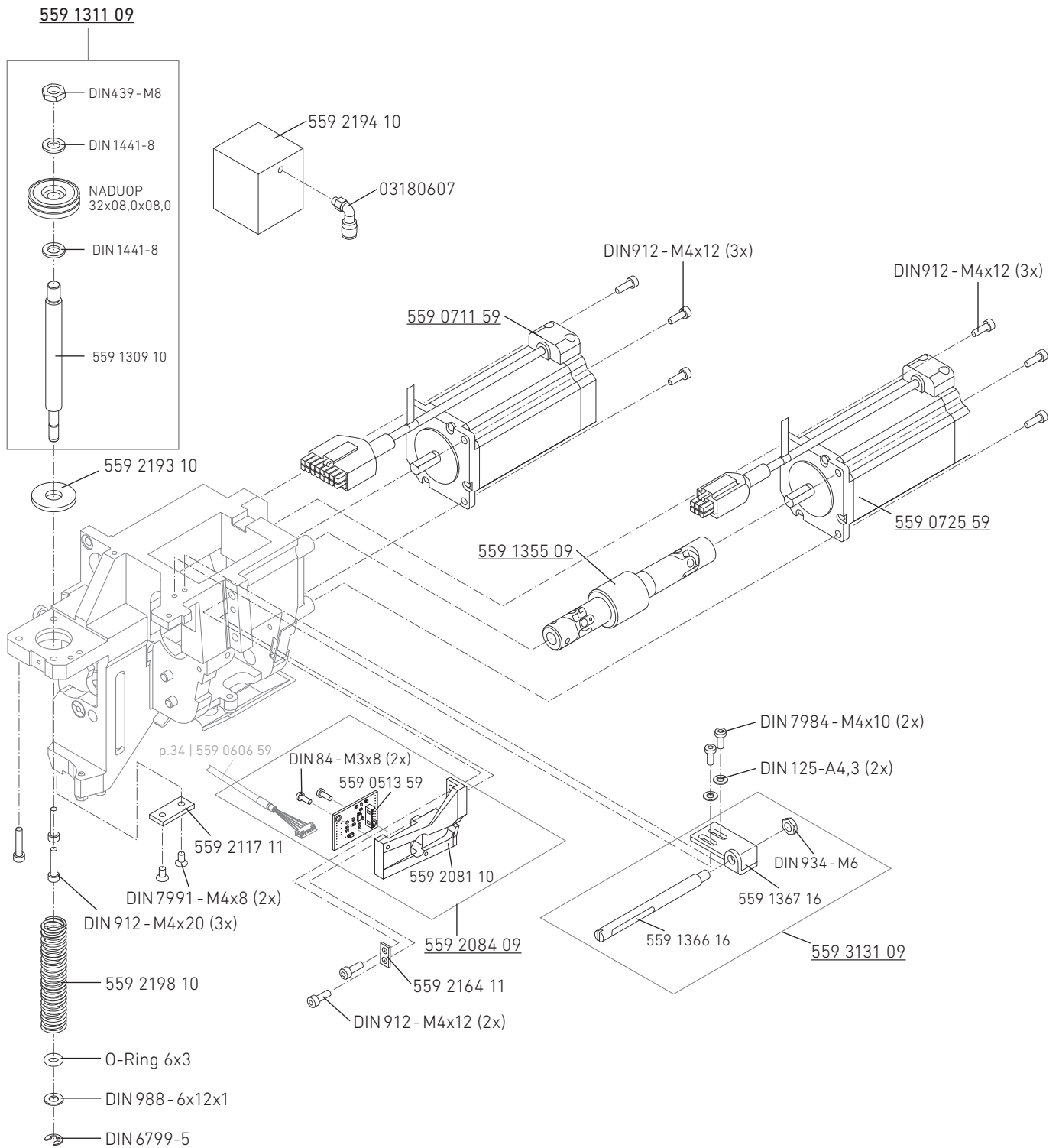
Cable of the 559 0507 59 Head-Base PCB can be found in chapter 06.05. Electronic Parts

559 2080 09



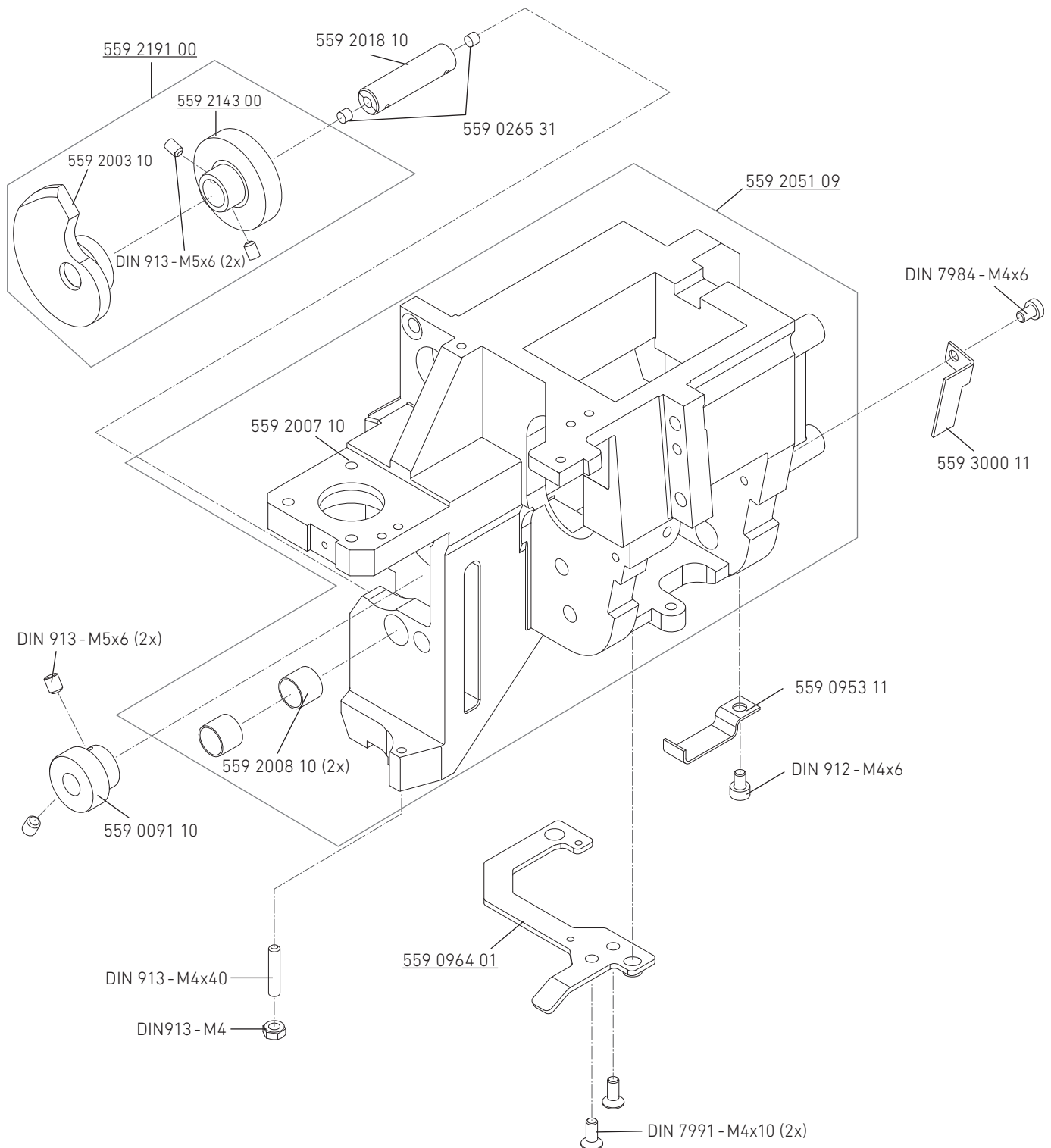
03. HEAD MODULE

04. INNER PARTS



03. HEAD MODULE

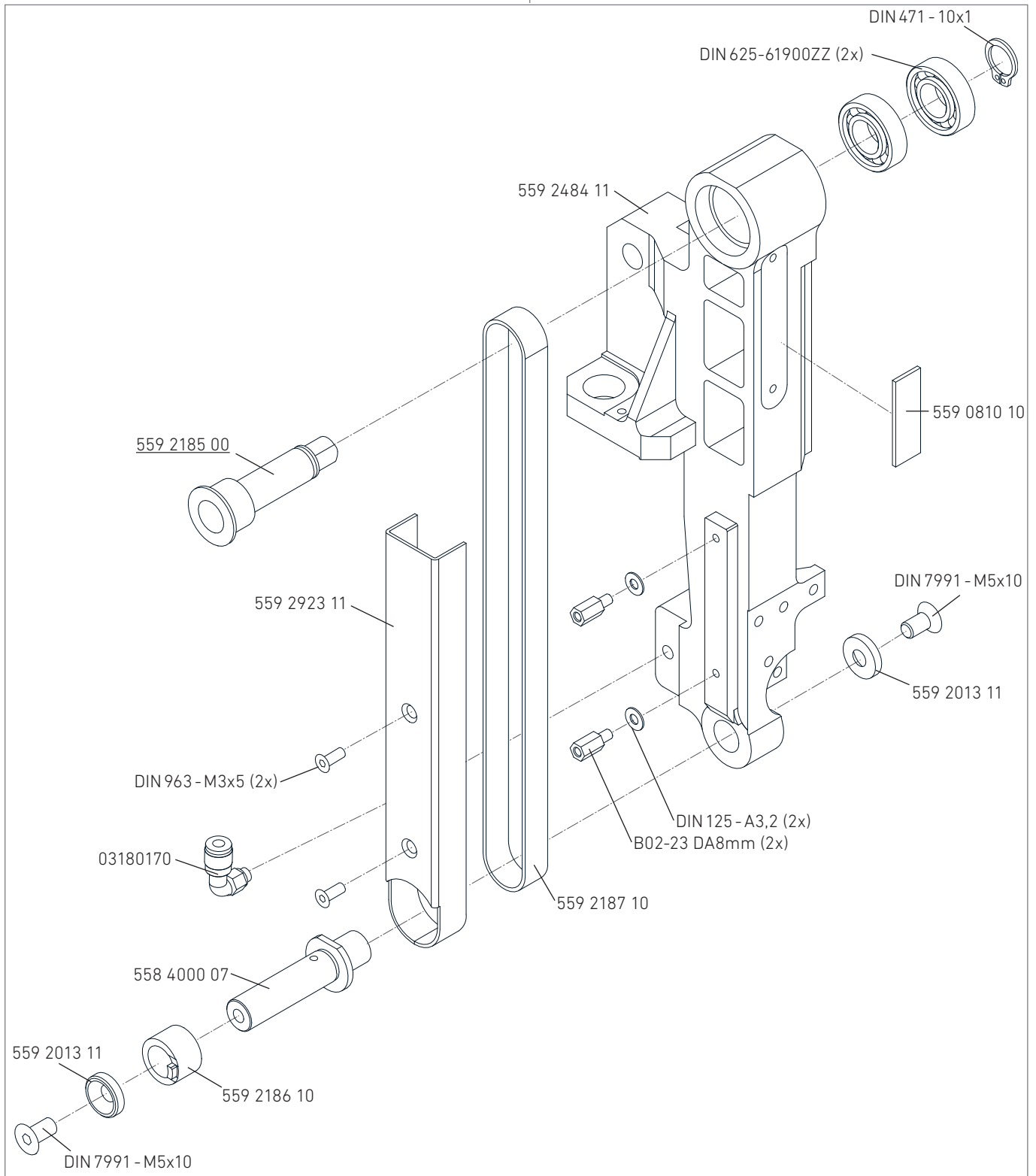
04.01. INNER PARTS



03. HEAD MODULE

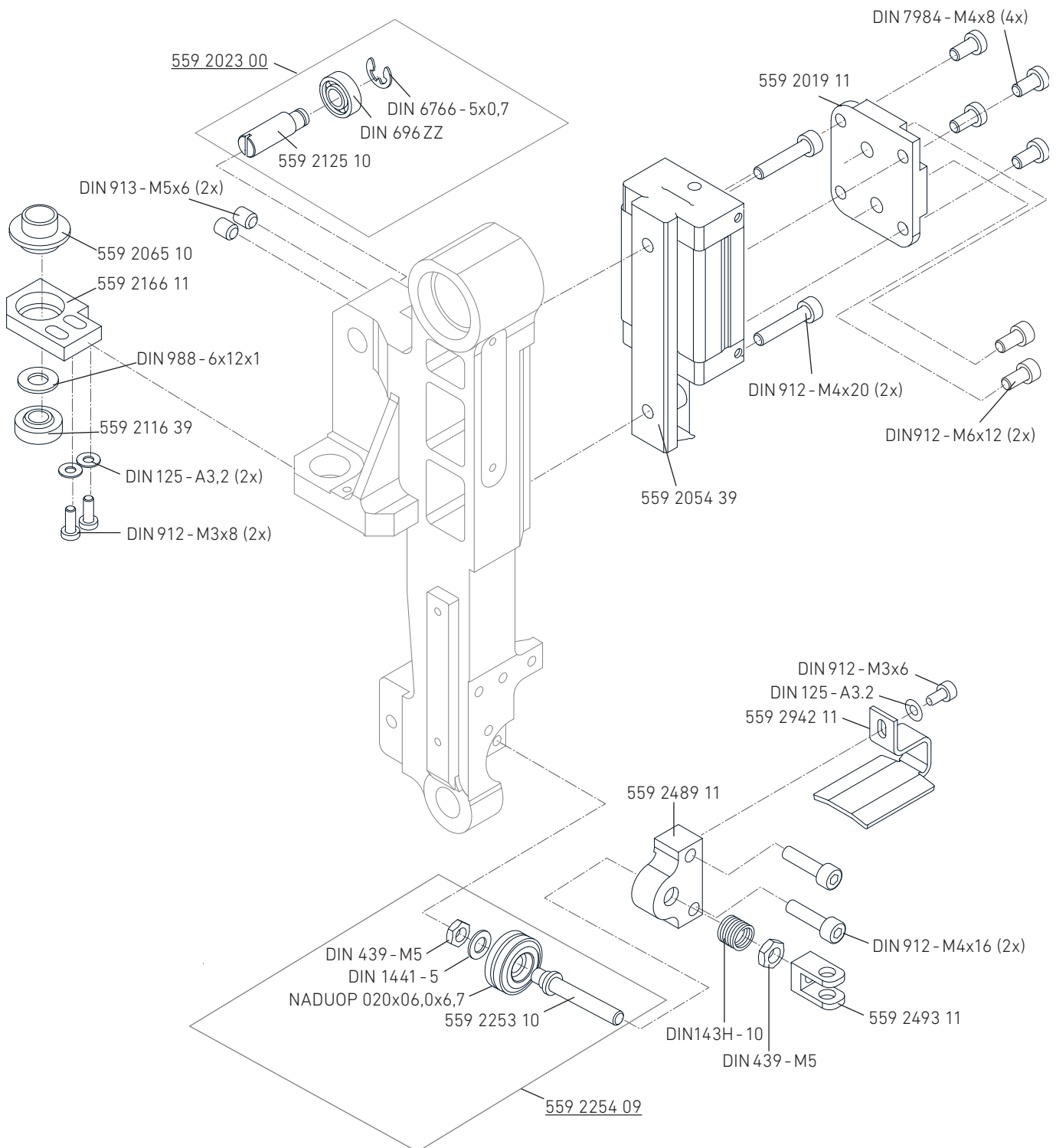
05. ANVIL 559 1330 09

559 1330 09



03. HEAD MODULE

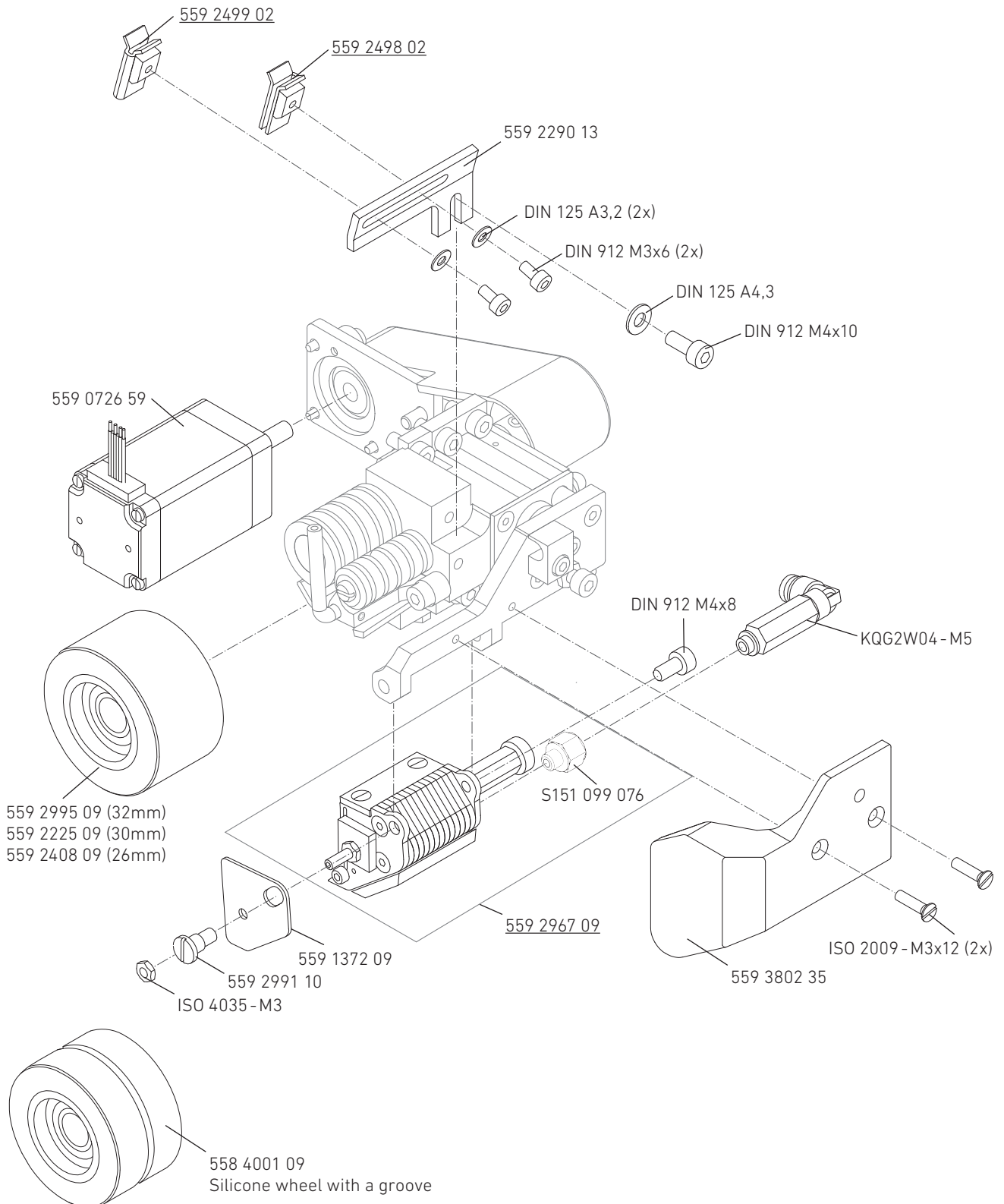
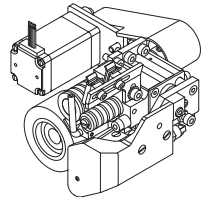
05.01. ANVIL 559 1330 09



03. HEAD MODULE

06. NOZZLE

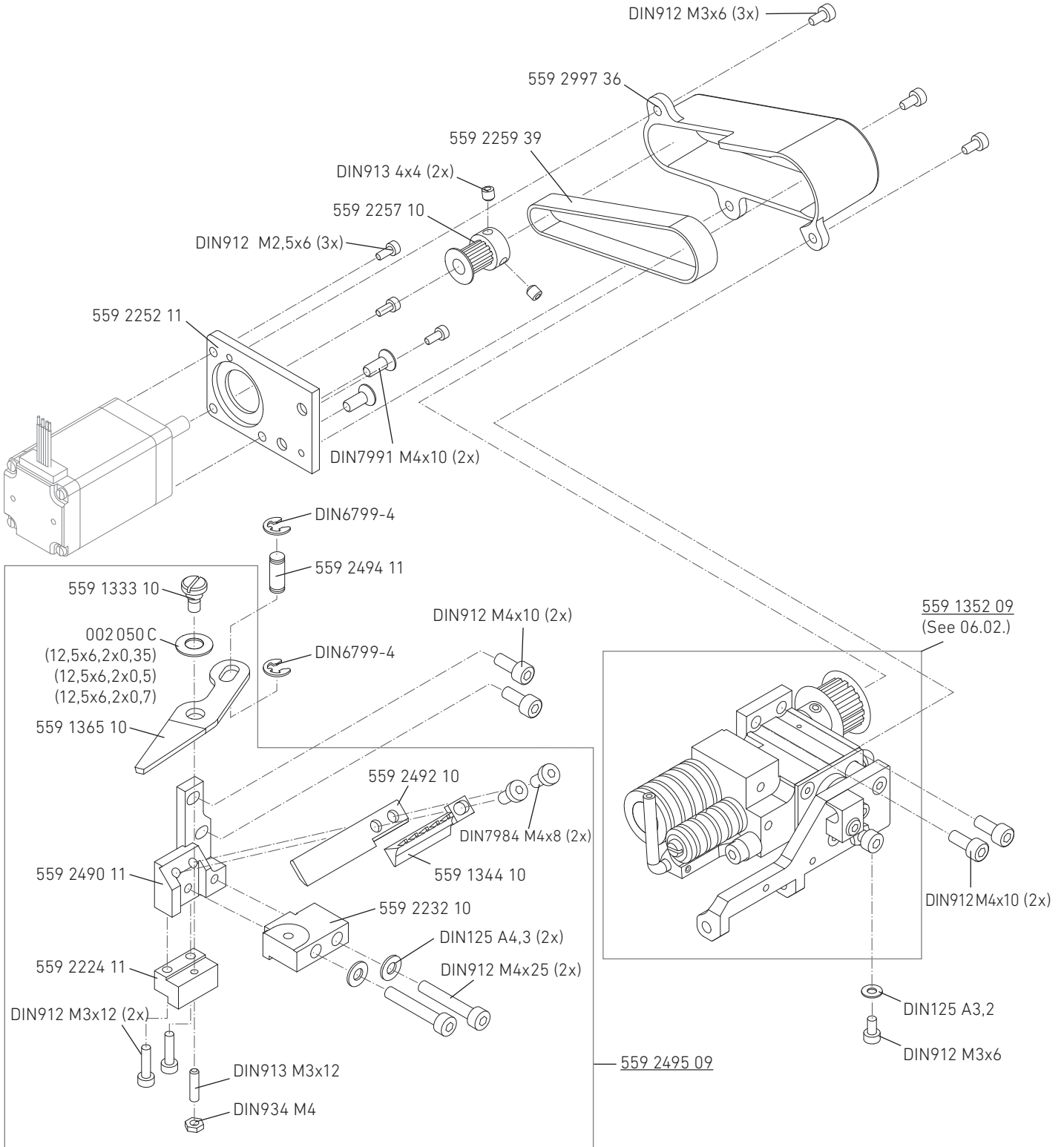
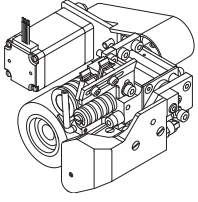
-1-3



03. HEAD MODULE

06.01. NOZZLE

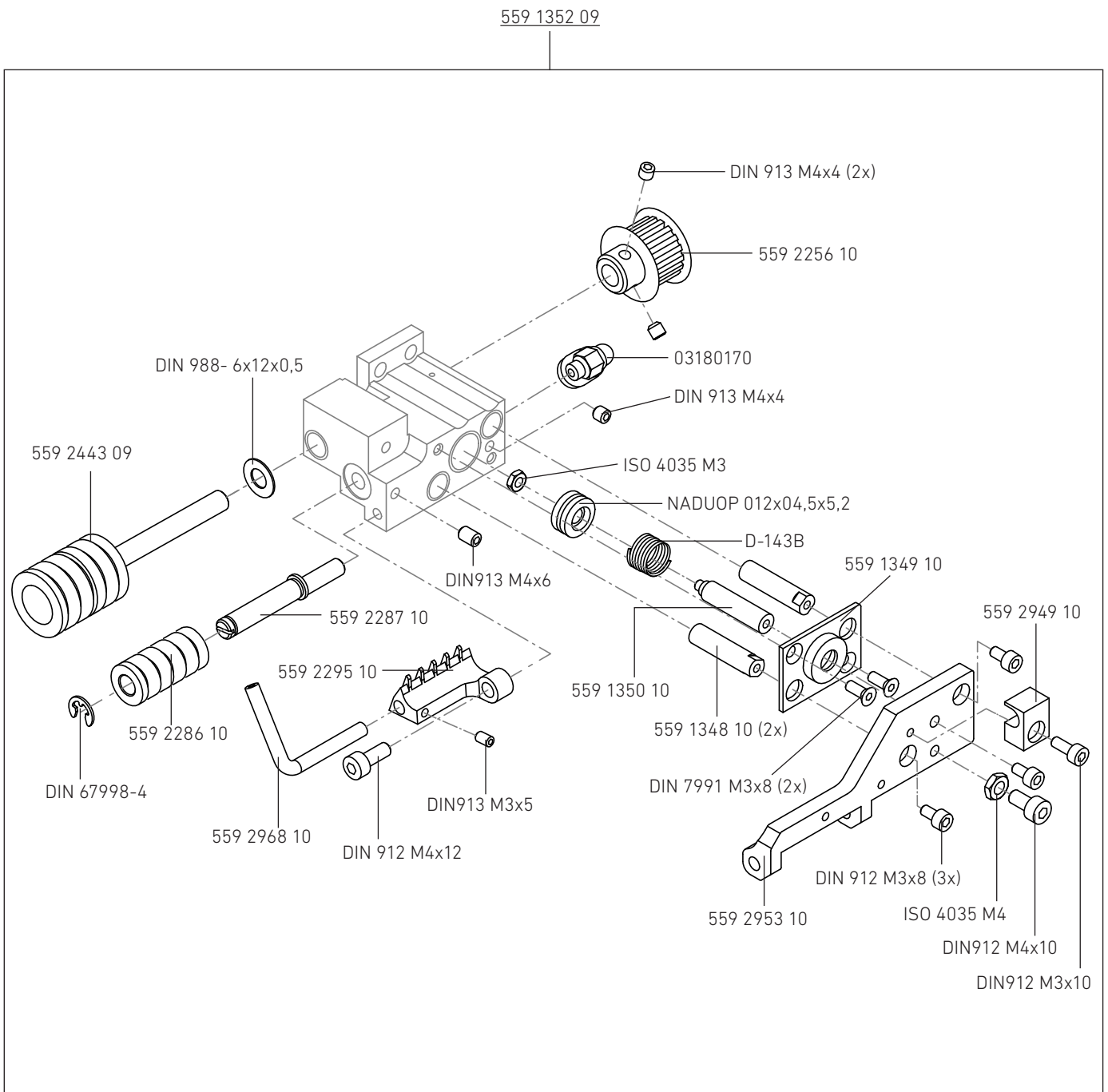
-2-3



03. HEAD MODULE

06.02. NOZZLE

-3-3



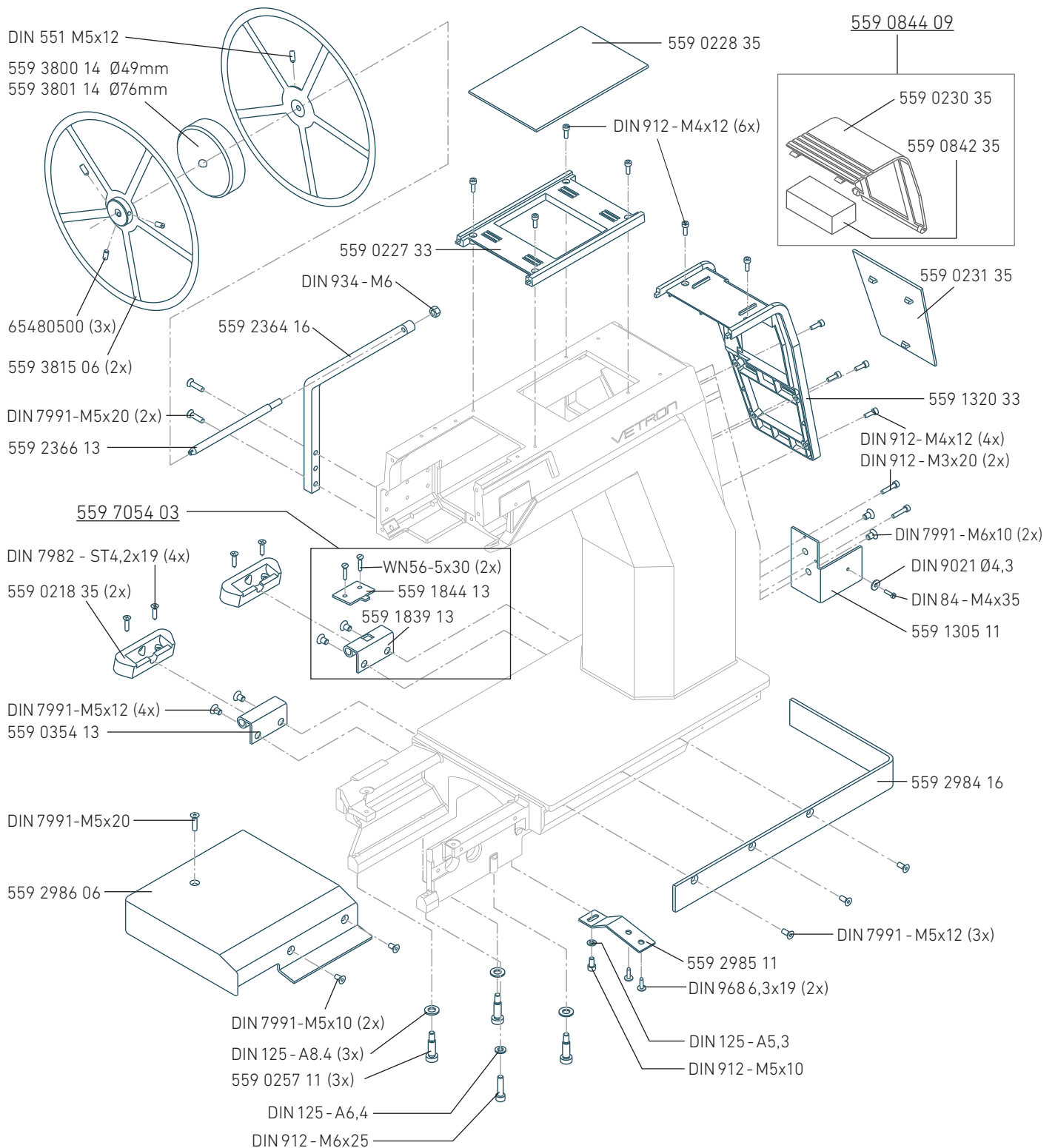
03. HEAD MODULE

04. FRAME MODULE

22 01. 557 013 000 (FRONT) | 557 011 000 (BACK)

04. FRAME MODULE

01. 557 013 000 (FRONT) | 557 011 000 (BACK)



05. POST MODULE

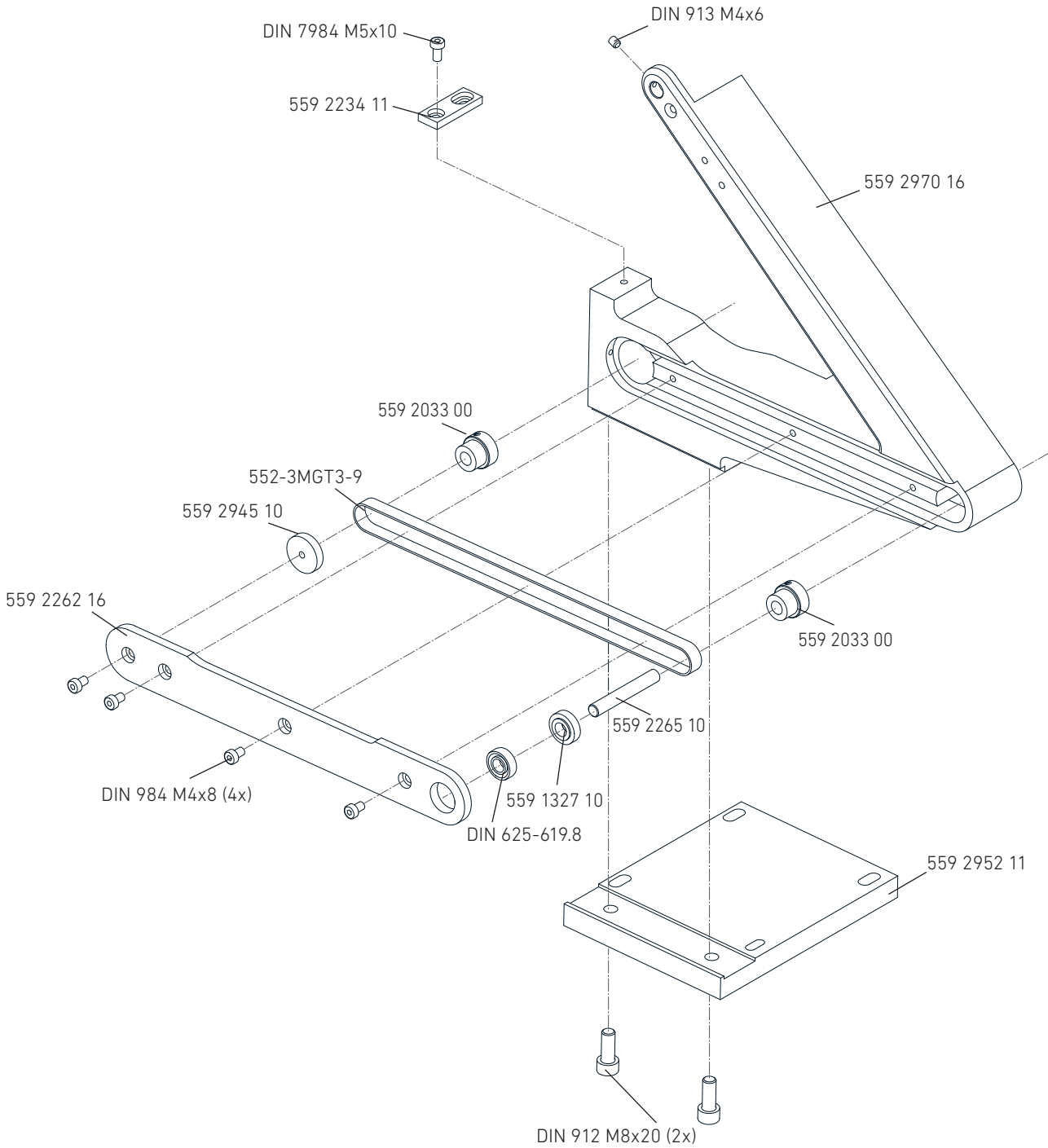
24 **01.** 557 253 000 POST MODULE (FRONT) WITH DRIVE

26 **02.** 557 254 00 POST MODULE (BACK) WITH DRIVE

05. POST MODULE

01. 557 253 000 POST MODULE (FRONT) WITH DRIVE

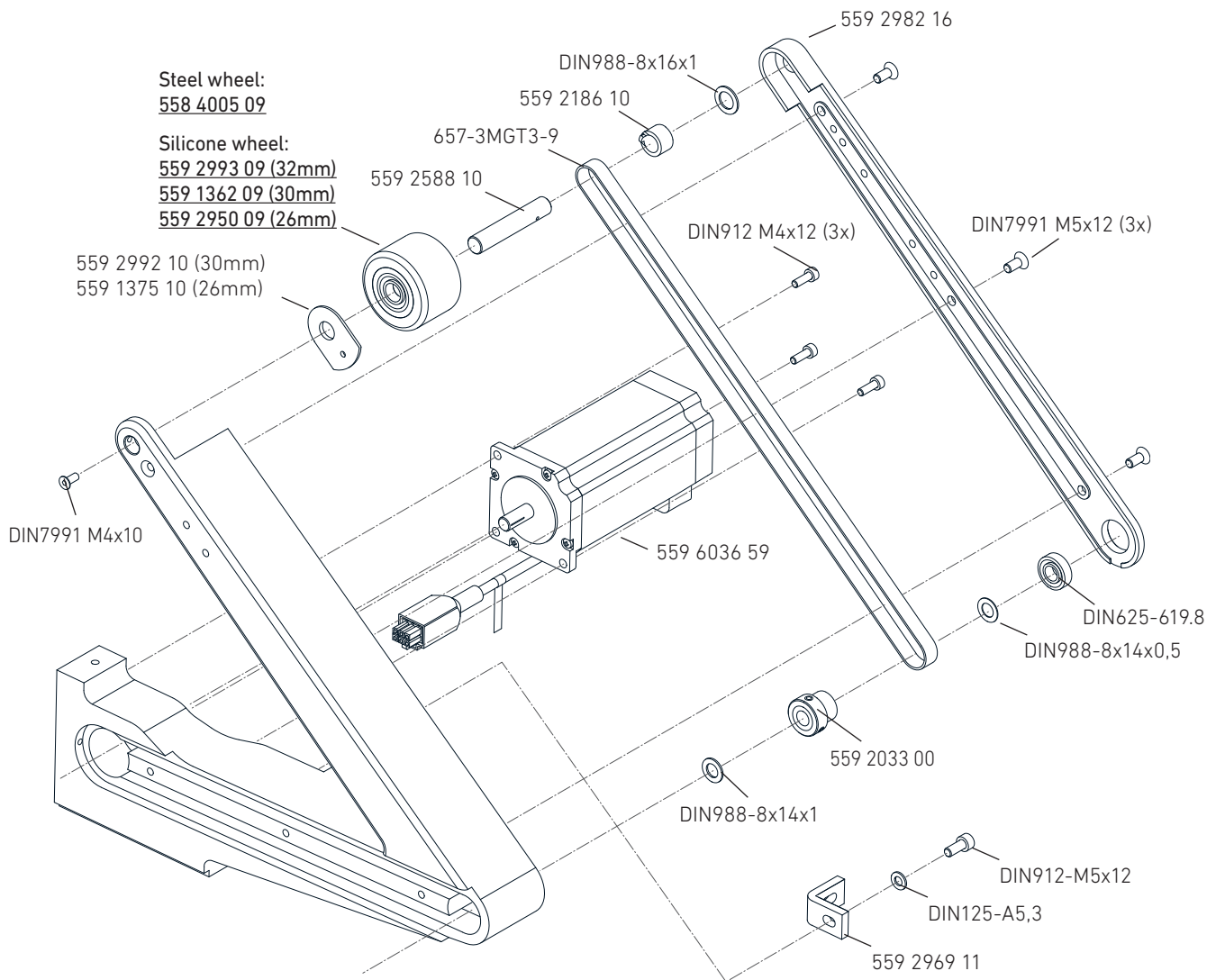
559 2980 09



05. POST MODULE

01.01. 557 253 000 POST MODULE (FRONT) WITH DRIVE

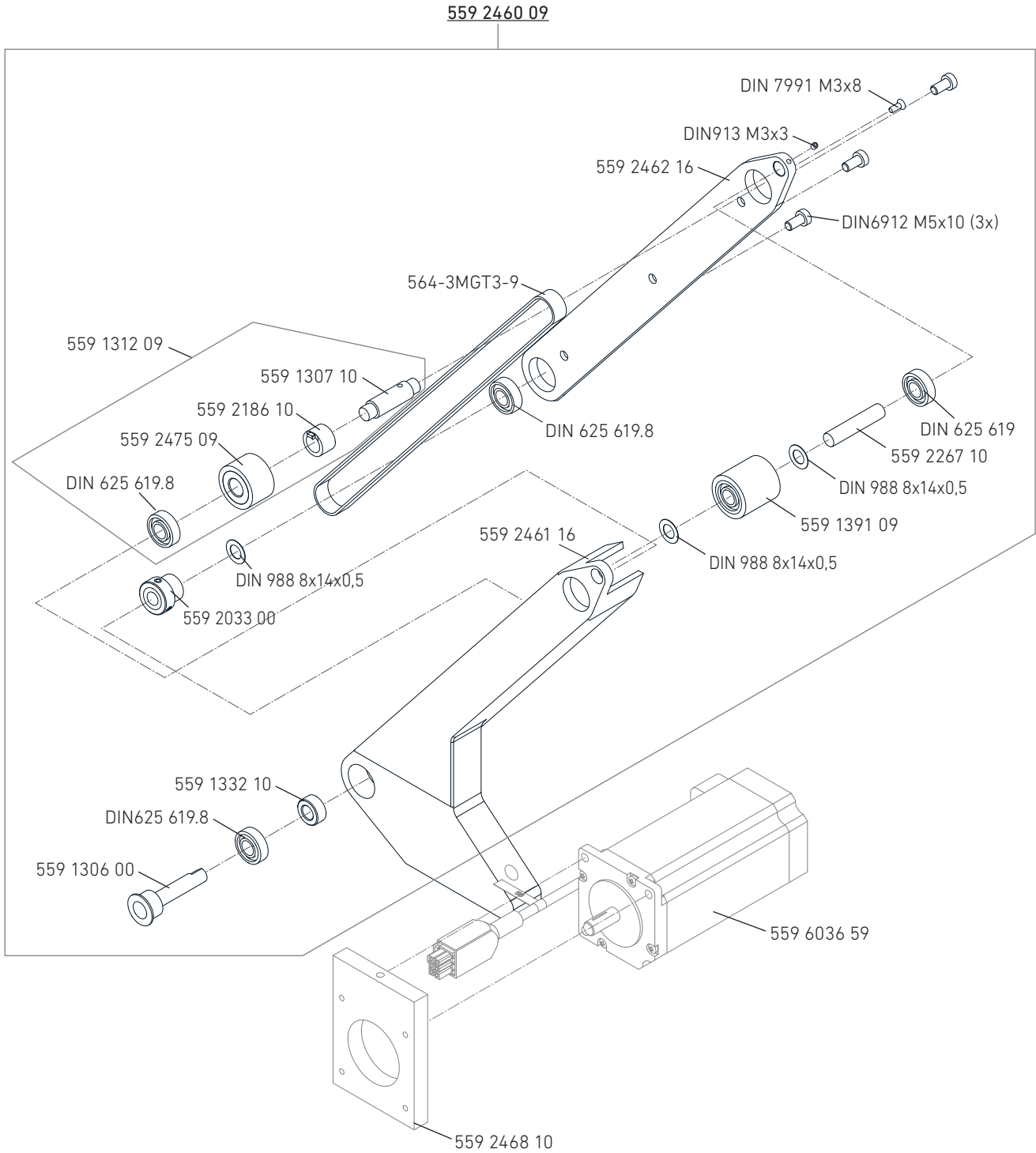
559 2980 09



05. POST MODULE

02. 557 254 00 POST MODULE (BACK) WITH DRIVE

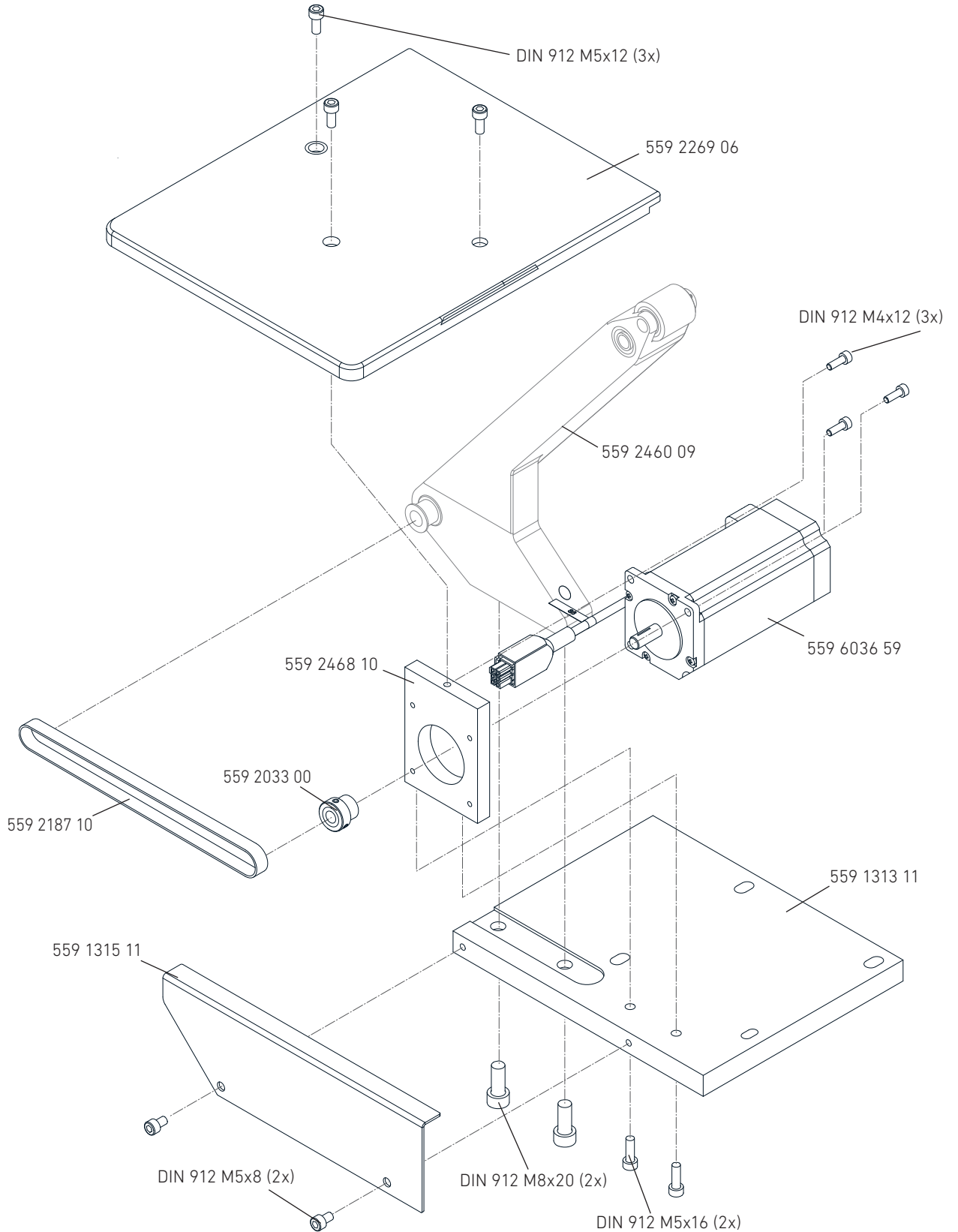
559 1328 09



05. POST MODULE

02.01. 557 254 00 POST MODULE (BACK) WITH DRIVE

559 1328 09



05. POST MODULE

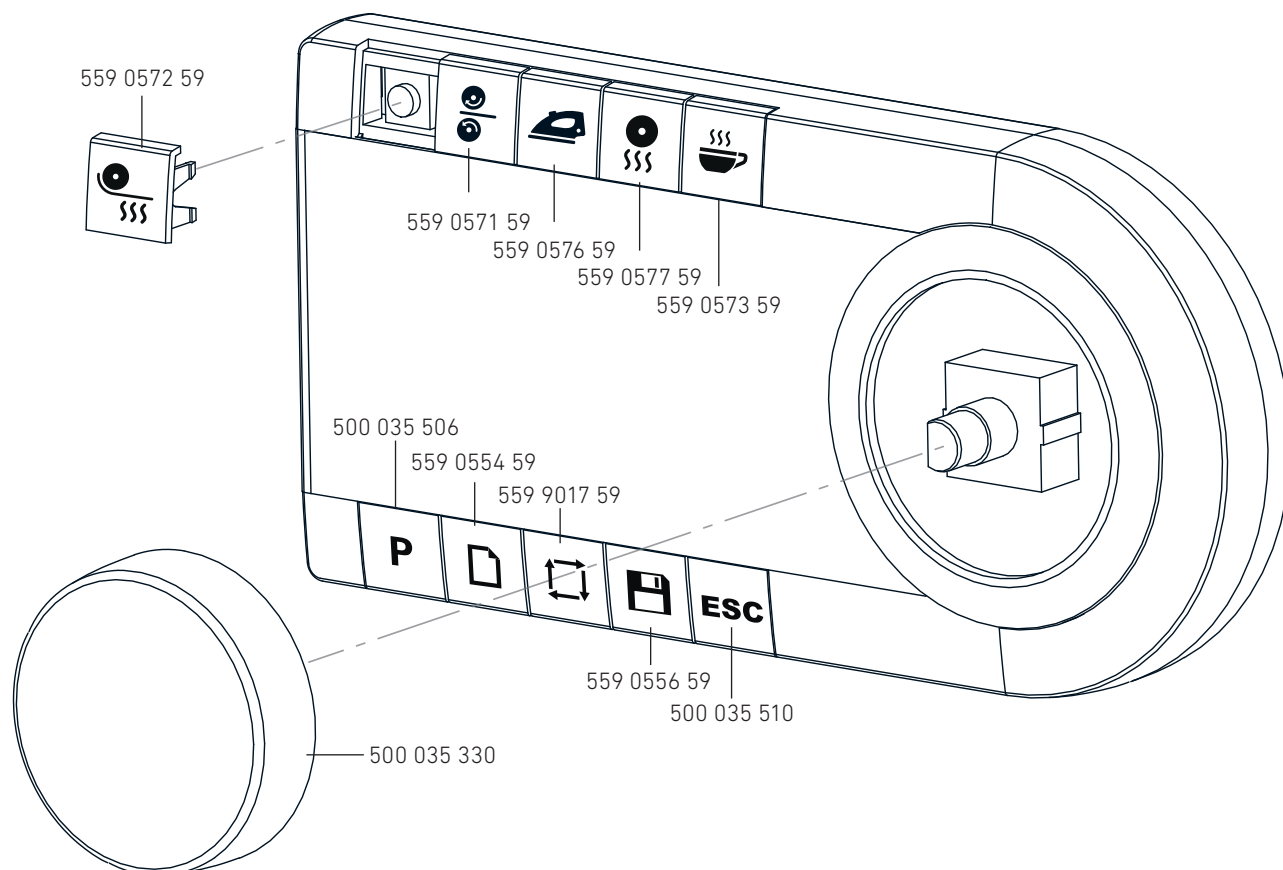
06. ELECTRONIC / PNEUMATIC PARTS

30	01. 559 0570 59 PANEL
31	02. 559 0760 59 VENTIL ASSY
32	03. 559 0749 59 CONTROL UNIT
33	04. 558 800 005 CABLING
34	05. CABLING HEAD PCB
35	06. PNEUMATIC COMPONENTS
36	06. 559 0746 59 CONTROL BOX
37	08. BACK COVER CONTROL BOX

06. ELECTRONIC / PNEUMATIC PARTS

01. 559 0570 59 PANEL

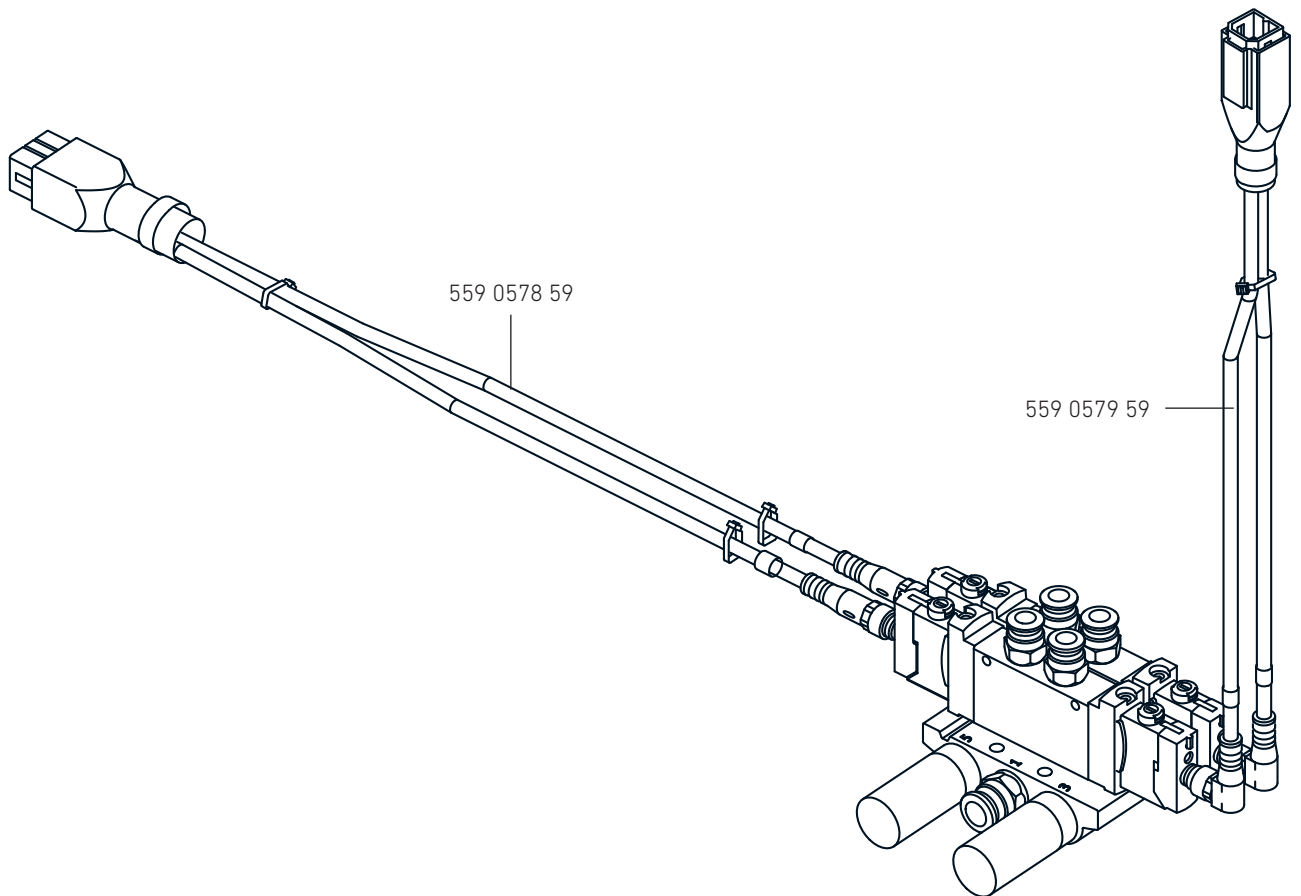
559 0578 59



06. ELECTRONIC / PNEUMATIC PARTS

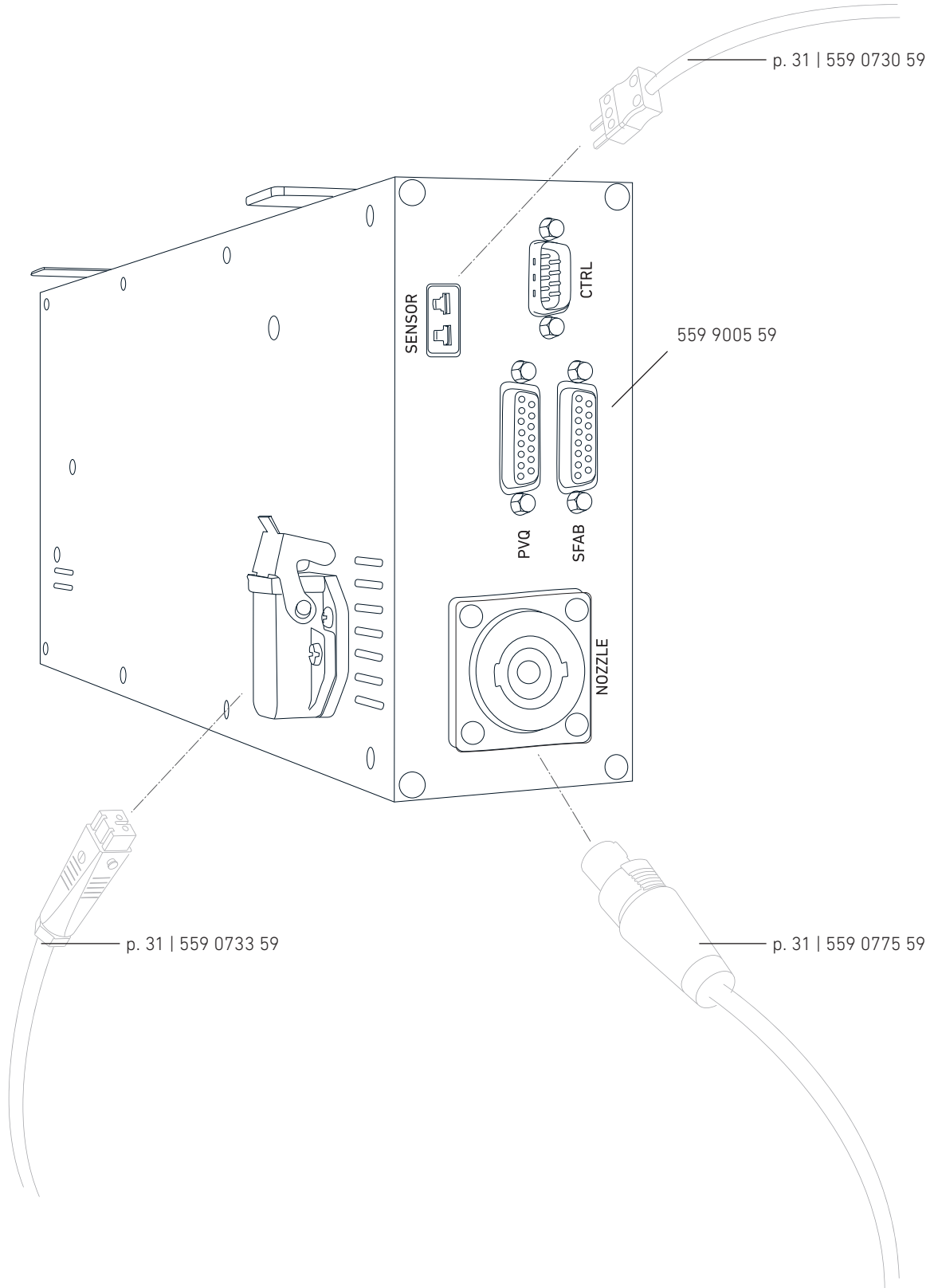
02. 559 0760 59 VENTIL ASSY

559 0760 59



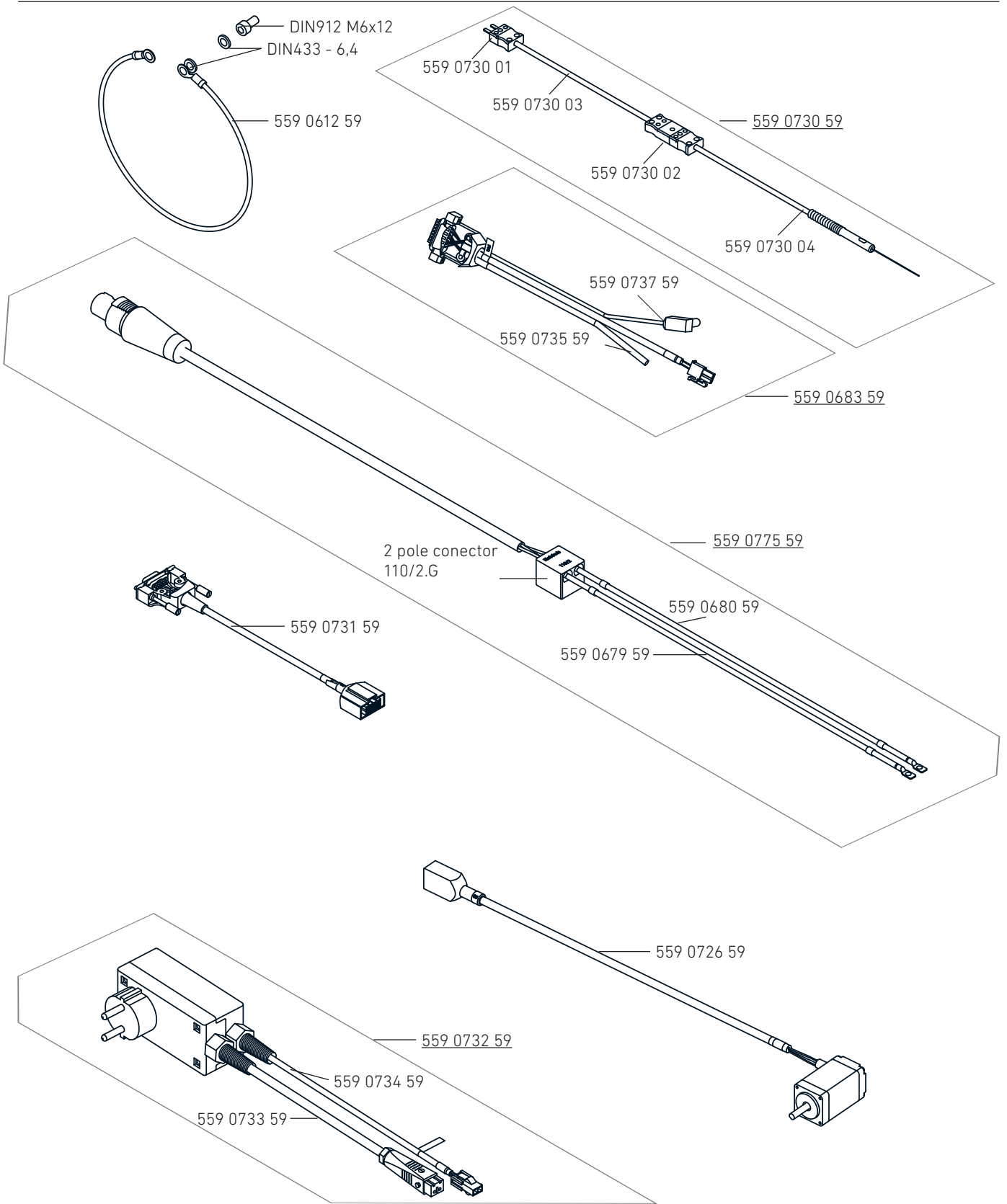
06. ELECTRONIC / PNEUMATIC PARTS

03. 559 0749 59 CONTROL UNIT



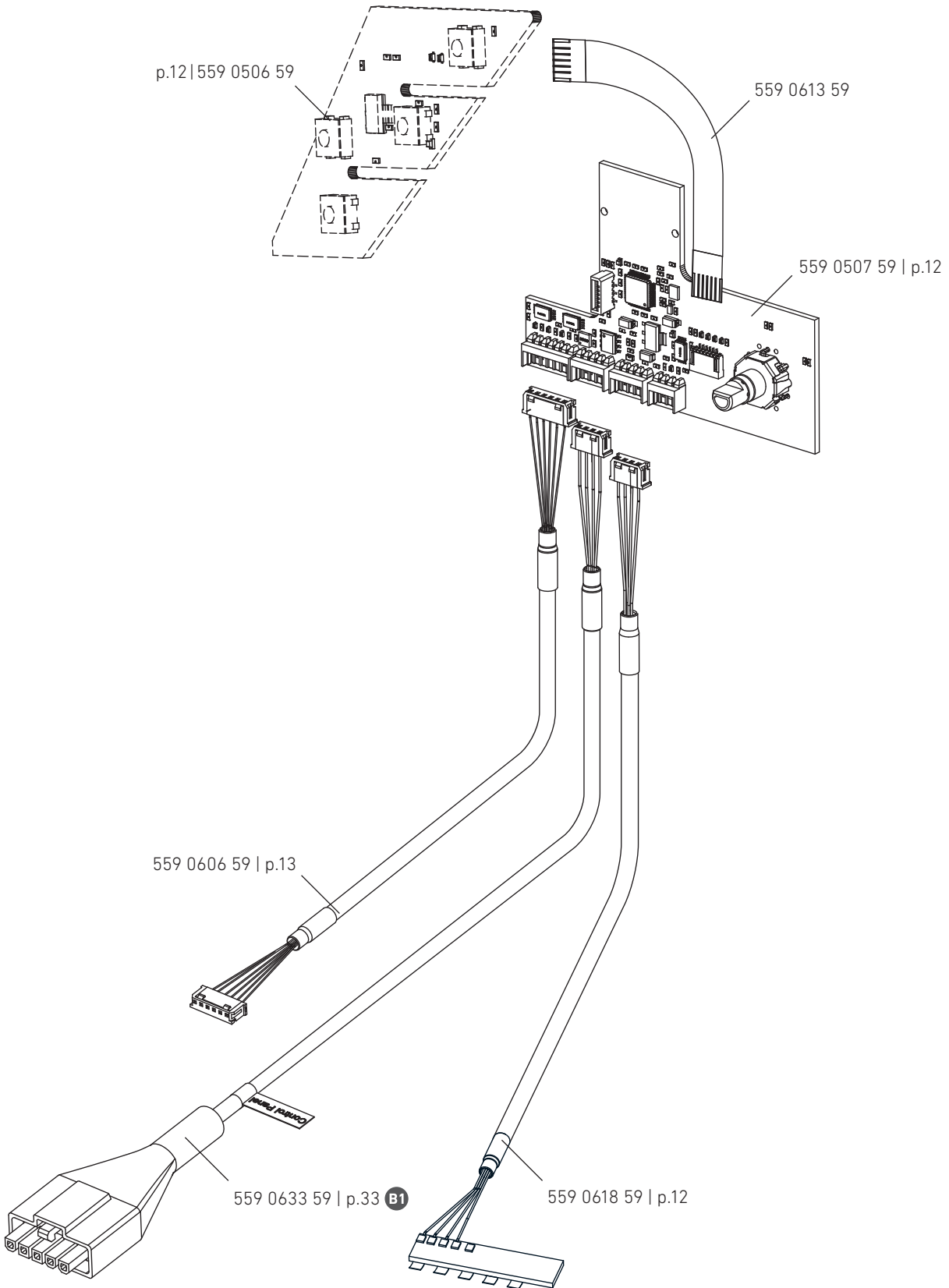
06. ELECTRONIC / PNEUMATIC PARTS

04. 558 800 005 CABLING



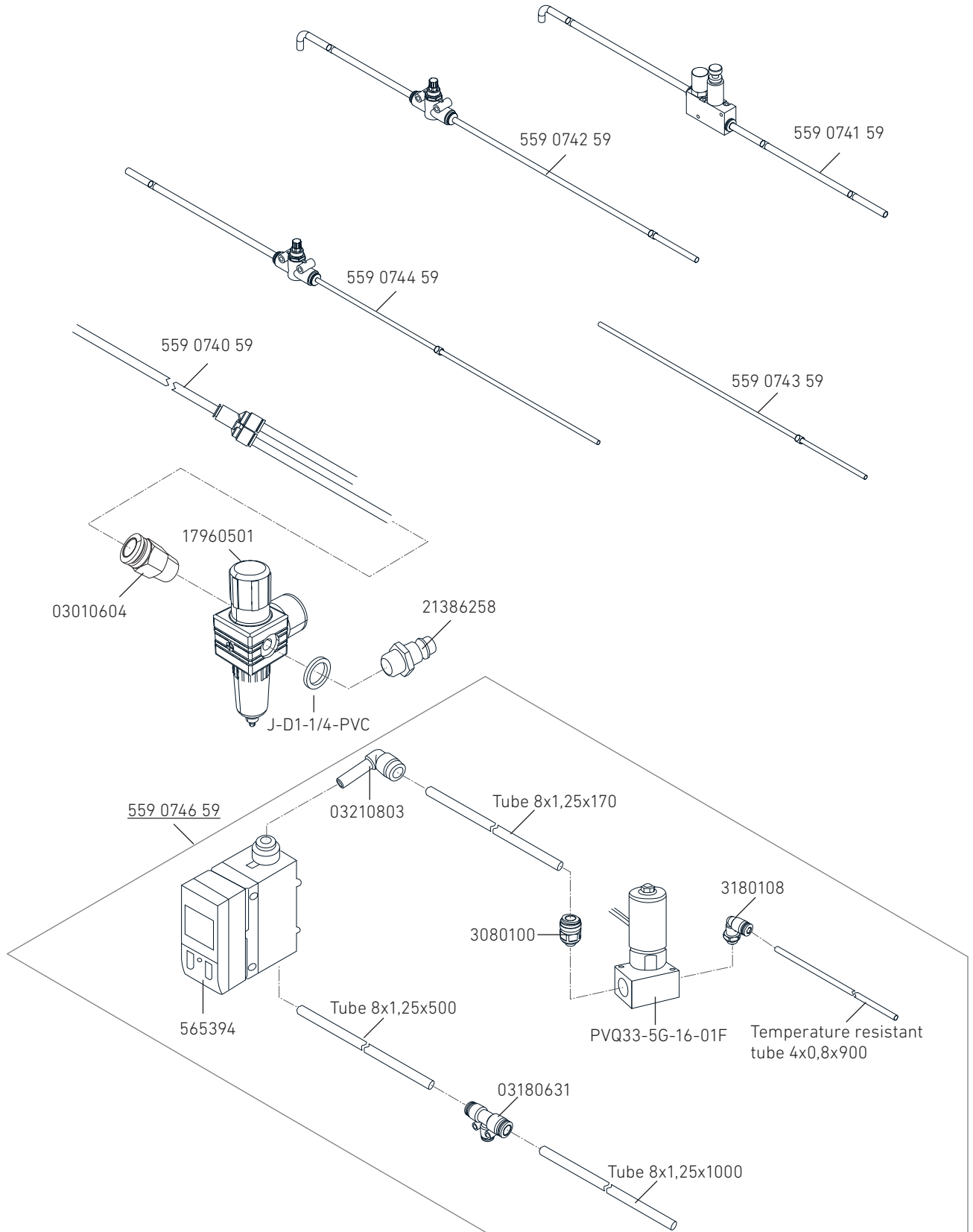
06. ELECTRONIC / PNEUMATIC PARTS

05. CABLING HEAD PCB



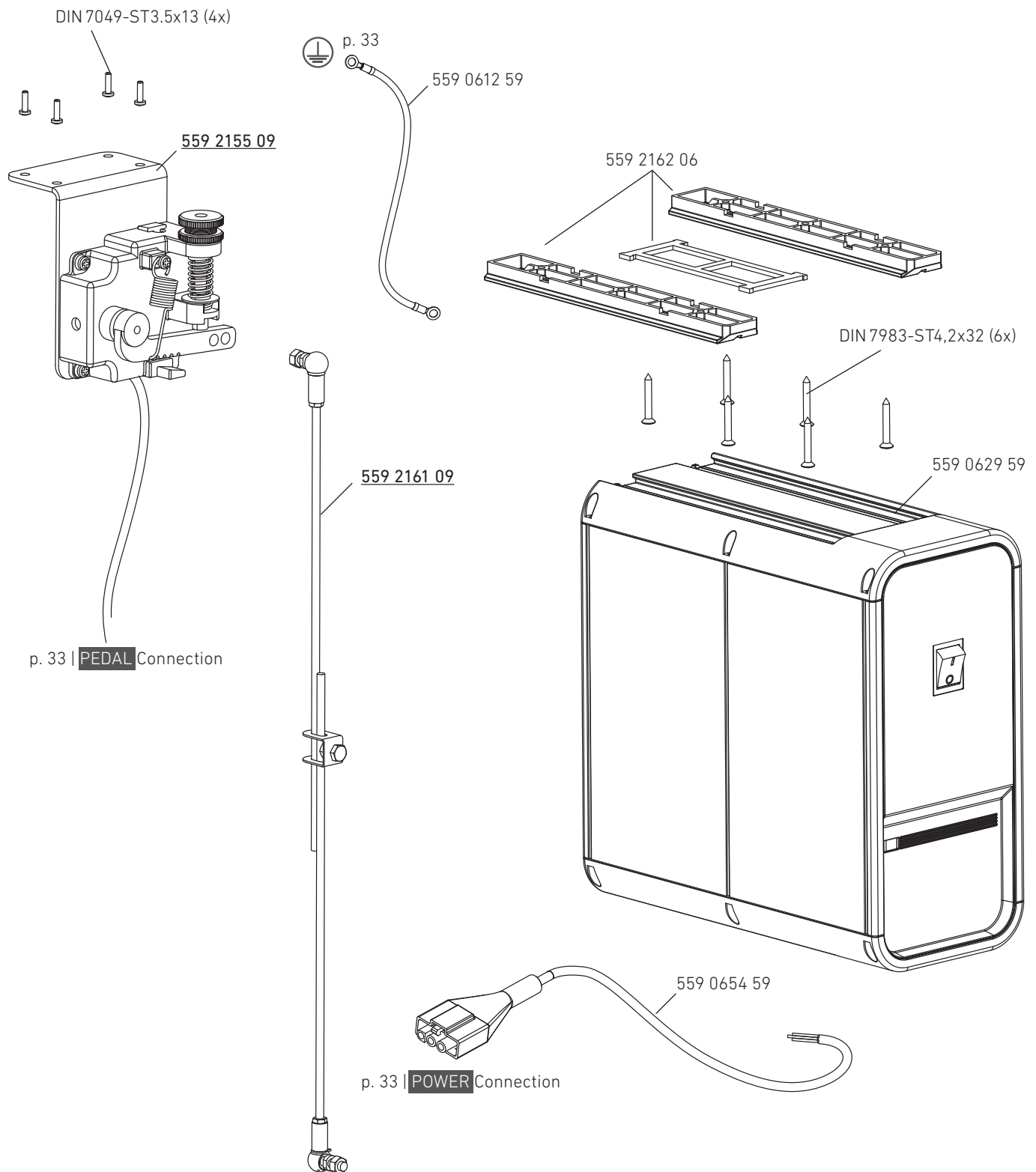
06. ELECTRONIC / PNEUMATIC PARTS

06. PNEUMATIC COMPONENTS



06. ELECTRONIC / PNEUMATIC PARTS

06. 559 0746 59 CONTROL BOX



06. ELECTRONIC / PNEUMATIC PARTS

08. BACK COVER CONTROL BOX

⊕ 559 0612 59 | p.32

S2 Reserve

S1 Upper Wheel Motor | p.32 – 559 0711 59

B1 Control Panel | p.34 – 559 0633 59

B2 Generator | p.31 – 559 0731 59

S4 Anvil Motor | p.13 – 559 0710 59

S3 Reserve

S6 Lower Wheel Motor | p.23/25 – 559 6036 59

S5 Tape Drive | 559 0726 59

POWER Power | p.32 – 559 0654 59

M1 Reserve

Y1 Reserve

M2 Reserve

Y2 Reserve

B4 Reserve

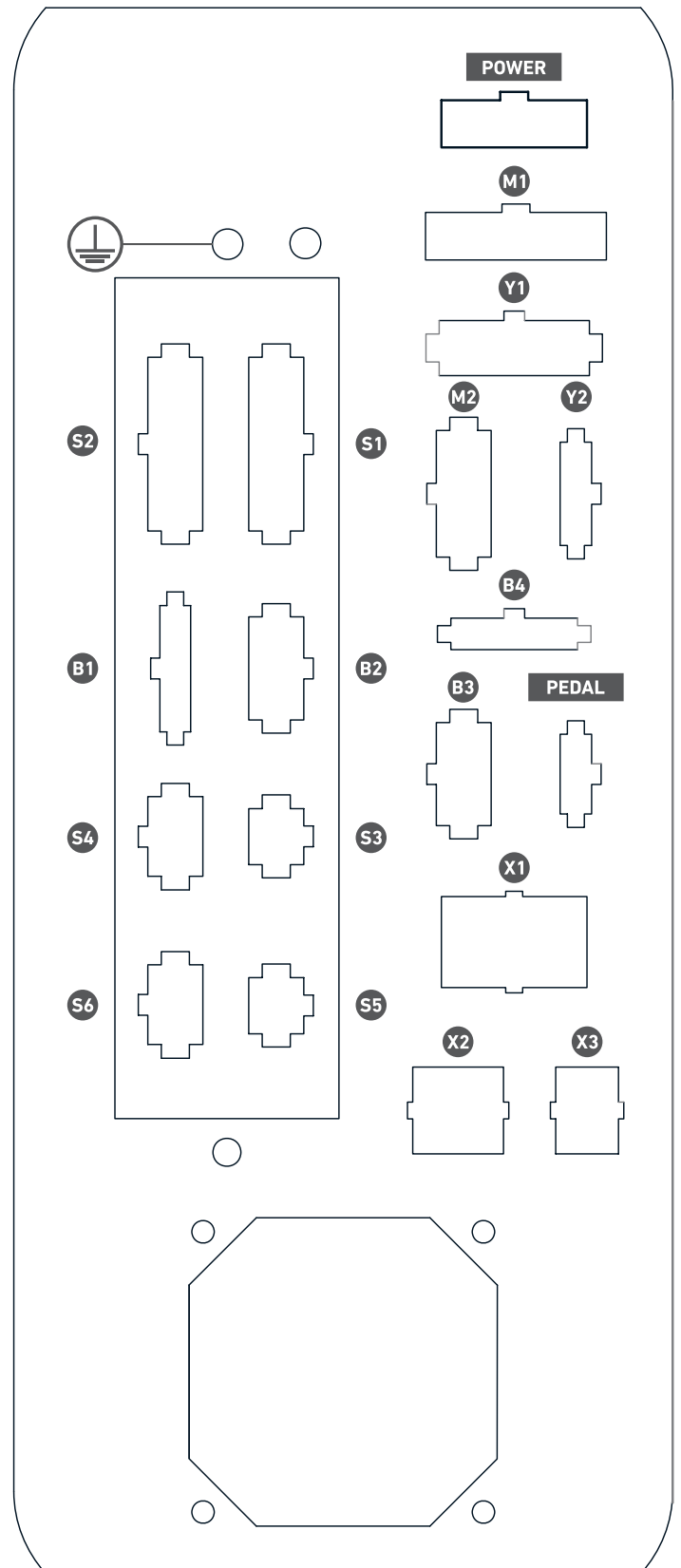
B3 Reserve

PEDAL Pedal | p.32 – 559 2155 59

X1 Reserve | p.31– 559 0608 59

X2 Reserve

X3 Reserve



06. ELECTRONIC / PNEUMATIC PARTS

07. WELDING ACCESSORIES

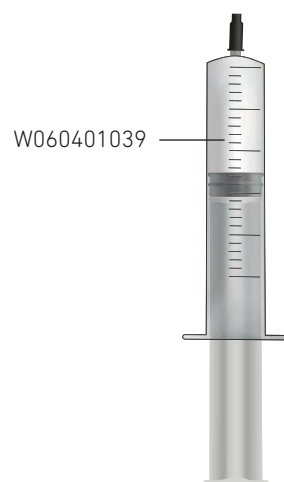
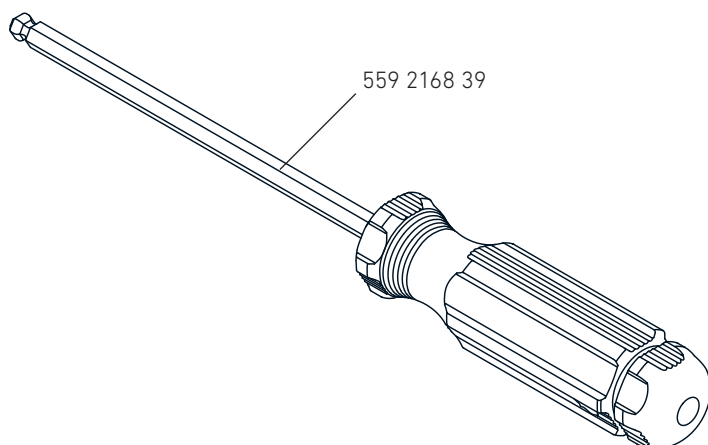
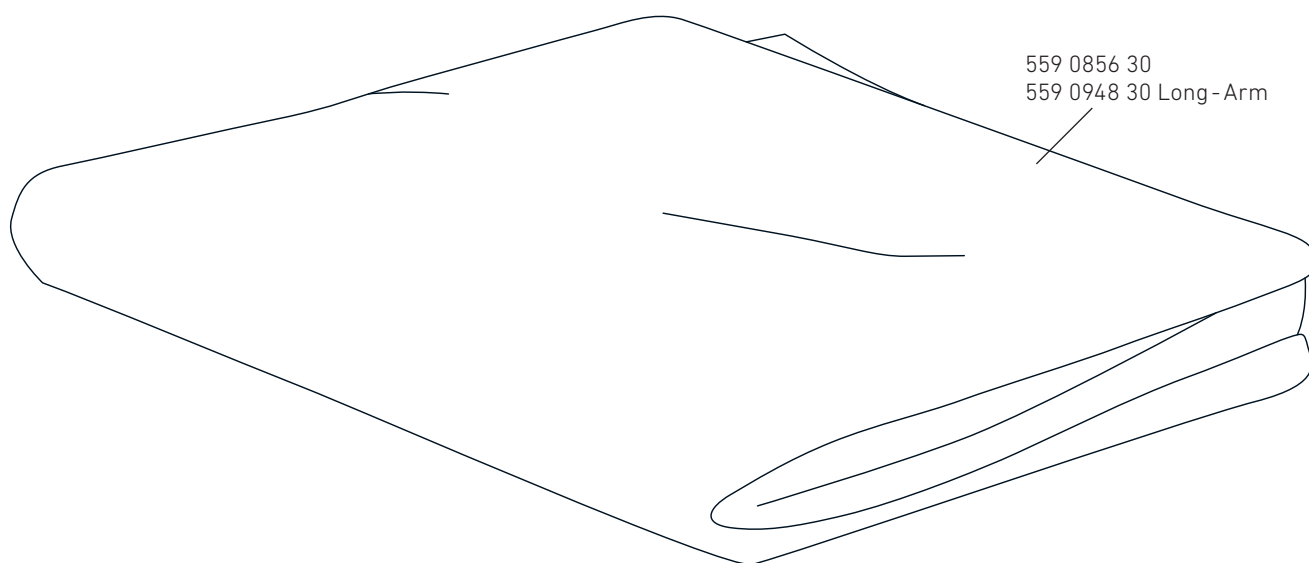
40 **01.** STANDARD ACCESSORIES

41 **02.** 557 014 000 KNEE SWITCH

42 **03.** ADDITIONAL EQUIPMENT

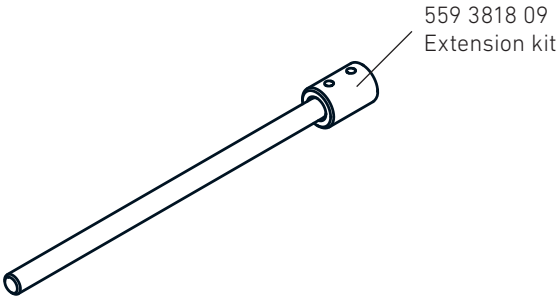
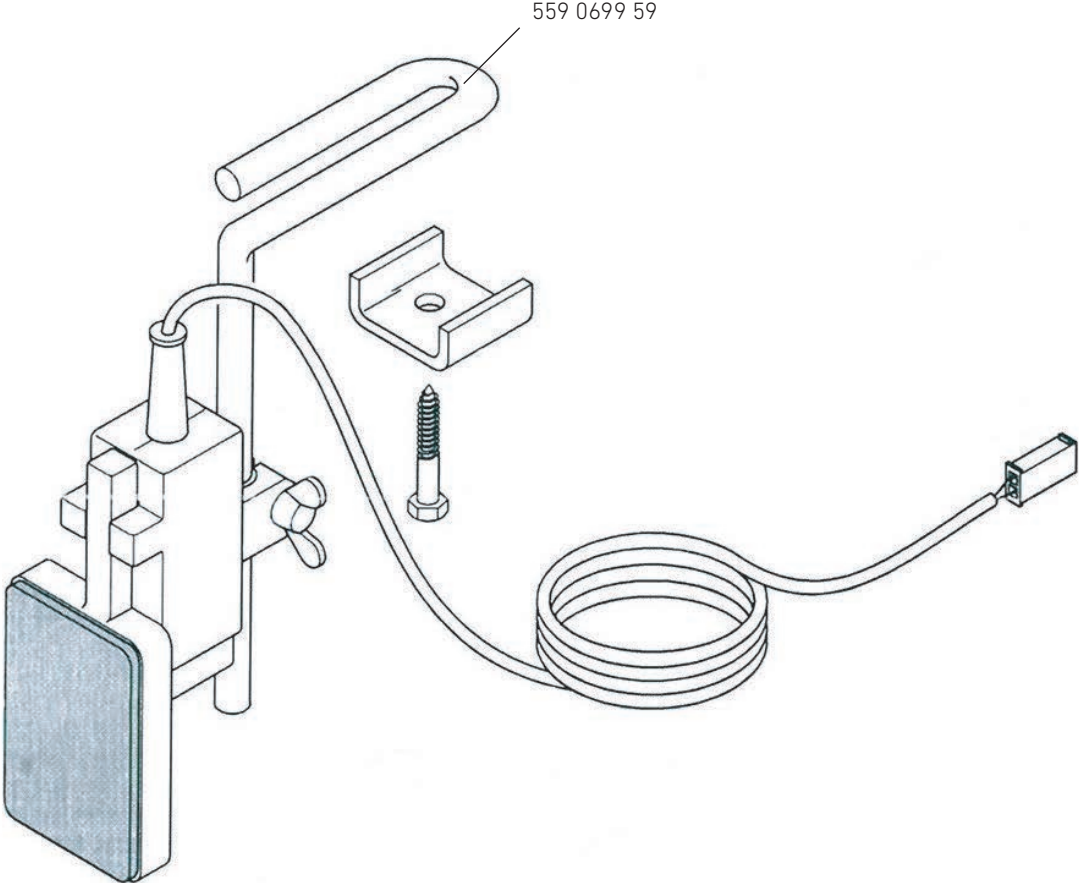
07. WELDING ACCESSORIES

01. STANDARD ACCESSORIES



07. WELDING ACCESSORIES

02. 557 014 000 KNEE SWITCH

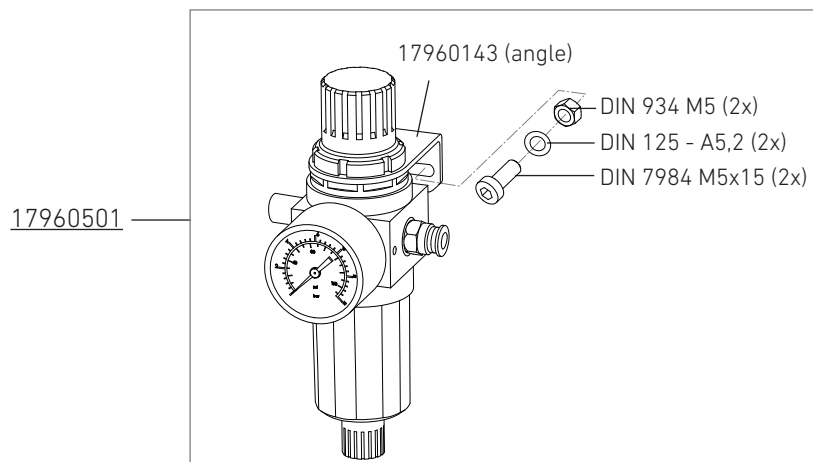


07. WELDING ACCESSORIES

03. ADDITIONAL EQUIPMENT

DESCRIPTION

PNEUMATIC UNIT



44 **01. TABLE STAND**

08. TABLE STAND

01. TABLE STAND

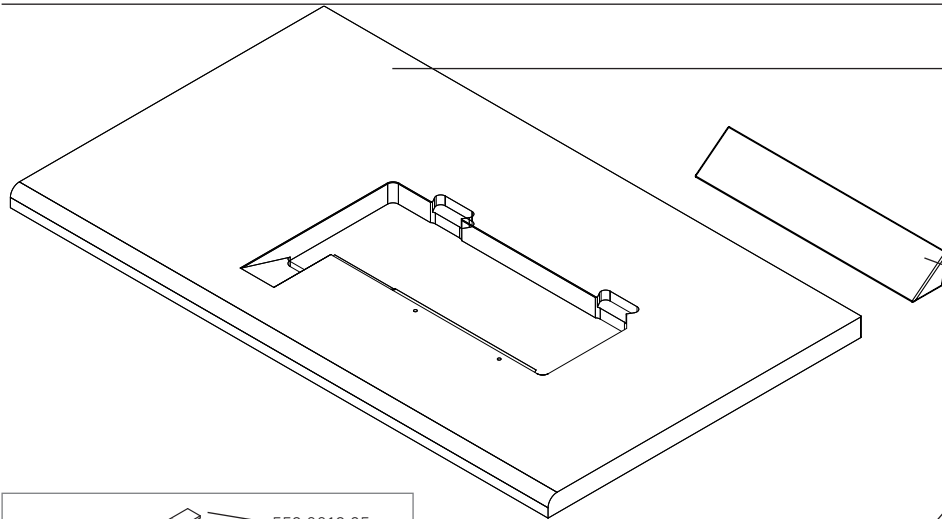


TABLE PLATE

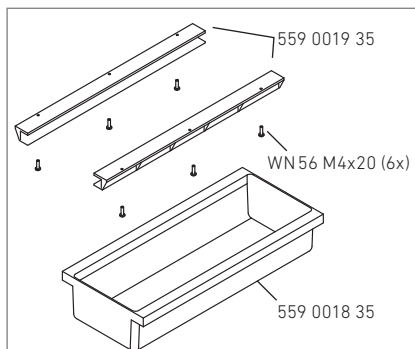
Standard

559 2998 10 Column from the front
559 2946 10 Column from behind
(Table plate 1200x700 mm)

TABLE WEDGE

Standard

559 2999 10



559 2163 09

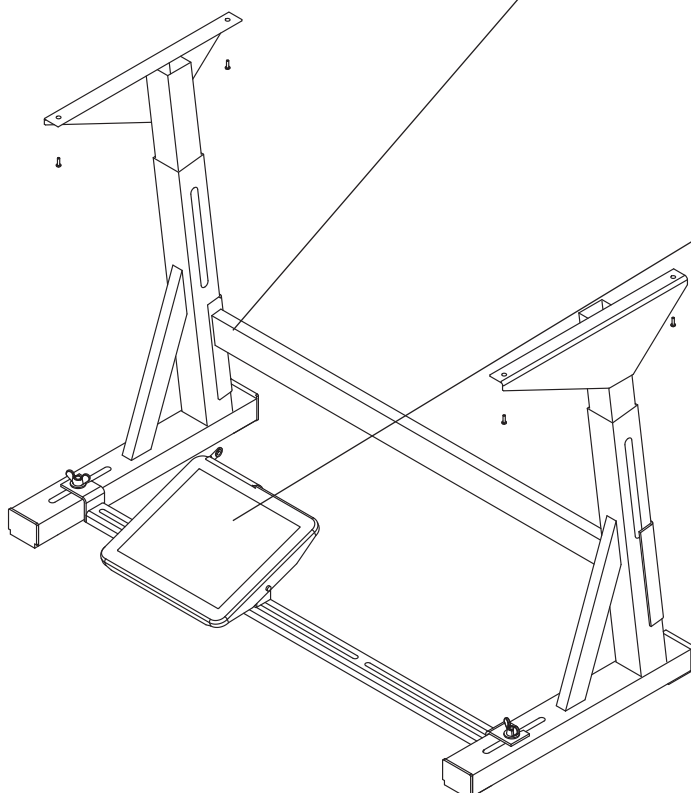
TABLE STAND

Standard

01-00115-35
(Height adjustable stand **incl.**
pedal (KES-B-1000-L))

01-01500 (Option)
Electric height adjustable stand
for sitting or standing position
(KES-2000) **without pedal**

01-01520 (Option)
Electric height adjustable stand
for sitting or standing position
with rolls (KES-2000-R0075)
without pedal



PEDAL

11-00030-35
Pedal KES-B-1000-L

11-001129-35 (Option)
Pedal K-20 for **electric** height
adjustable stand

11-00123-35 (Option)
Pedal K-40-T for **electric**
height adjustable stand for
sitting or standing operation

09. INDEX - PARTS OF HOTAIR WELDING

At the time of printing, all information and illustrations in this document were up-to-date.

Technical changes without prior notice!



NOTE!

- » Please take note of, we will not be liable for spare parts and accessories, not purchased from us. These parts were neither examined by us, nor released. Consequently, the installation or use of these products can have a negative influence on features and your workflow of the machine.
- » We accept no liability for any damage caused by the use of non-original parts.
- » Parts which are boxed have a underlined number.
These parts have a assembly part number!
- » The part numbers in the box can be seperately ordered.

09. INDEX - PARTS OF HOTAIR WELDING

PART NUMBER	PAGE	PART NUMBER	PAGE
Symbole		559 0018 35	44
1-00030-35	44	Drawer	
Pedal KES-B-1000-L		559 0019 35	44
01-00115-35	44	Drawer slide	
(Height adjustable stand incl. pedal (KES-B-1000-L))		559 0091 10	14
01-01500 (Option)	44	Gear wheel	
Electric height adjustable stand for sitting or standing position (KES-2000) without pedal		559 0123 36	11
01-01520 (Option)	44	Cover	
Electric height adjustable stand for sitting or standing position with rolls (KES-2000-RO075) without pedal		559 0126 35	11
002 050 C (12,5x6,2x0,35)	18	Cover	
Plate-Spring		559 0218 35	22
2 pole conector 110/2.G	33	Rubber cushion	
Conector, max. cross section 16mm		559 0227 33	22
11-00123-35 (Option)	44	Frame	
Pedal K-40-T for electric height adjustable stand for sitting or standing operation		559 0228 35	22
11-001129-35 (Option)	44	Cover	
Pedal K-20 for electric height adjustable stand		559 0230 35	22
500 035 330	30	Cover behind	
Display Button (Jog Key)		559 0231 35	22
500 035 506	30	Cover	
Printed Button (Parameter)		559 0242 50	12
500 035 510	30	Neodym Scheibenmagnet 5x4 Nd 35	
Printed Button (Cancel)		559 0257 11	22
552-3MGT3-9	24	Screw according DIN 7379	
Tooth-belt		559 0265 31	14
557 011 000	22	Plug	
Frame Module Back		559 0354 13	22
557 013 000	22	Hinge	
Frame Module Front		559 0392 15	12
557 014 000	41	Key cape	
Accesories for HotAir		559 0394 13	12
557 150 000	09	Frame balance wheel	
Head Module		559 0395 15	12
557 253 000	24, 25	Balance wheel	
Post module (front)		559 0397 69	12
557 254 00	26, 27	Key cape	
Post Module (back)		559 0402 15	12
558 4000 07	15	Carrier	
Bolt		559 0423 10	14
558 4001 09	17	Gear Wheel	
Silicone wheel with a groove		559 0430 36	11
558 4005 09	25	Endcarriage	
Steel Wheel assy		559 0499 10	12
		Spring	
		559 0506 59	12, 34
		Head PCB	

09. INDEX - PARTS OF HOTAIR WELDING

PART NUMBER	PAGE	PART NUMBER	PAGE
559 0507 59 Head-Base PCB	12, 34	559 0725 59 Stepper motor Fei Long with cable(S4)	13
559 0513 59 PCB material thickness sensor	13	559 0726 59 Stepping Motor ST2818L1404-A	17, 33
559 0554 59 Printed Button (New Program)	30	559 0730 01 Miniature plug	33
559 0556 59 Printed Button (Save)	30	559 0730 02 Miniature-plug and -socket	33
559 0570 59 Panel	30	559 0730 03 Thermocouple compensation cable	33
559 0571 59 Printed Button (Feed Wheel backwards)	30	559 0730 04 Sensor	33
559 0572 59 Printed Button (Welding Program)	30	559 0730 59 Temperature sensor and control	32, 33
559 0573 59 Printed Button (Breake)	30	559 0731 59 Connector to SMC control	33
559 0574 59 Key cape	12	559 0732 59 Generator switch	33
559 0575 59 Key cape	12	559 0733 59 Cable_Generator switch	32, 33
559 0576 59 Printed Button (Ironing)	30	559 0734 59 Cable_Generator switch	33
559 0577 59 Printed Button (Pre heat the upper feed wheel on / off)	30	559 0735 59 Cable pressure transmitter	33
559 0606 59 Foot Position Sensor cable	13, 34	559 0736 59 Cable pressure transmitter	33
559 0612 59 Earth cable (700mm)	33	559 0737 59 SPTE-P10R-S6-V-2,5K	33
559 0613 59 FFC-Cable	34	559 0740 59 Connection assy for valve block	35
559 0618 59 Display Connector complete	12, 34	559 0741 59 Connection assy Y1	35
559 0626 59 USB Flash Drive – Admin	40	559 0742 59 Connection assy Y2	35
559 0633 59 Head base cable	34	559 0743 59 Connection assy Y3	35
559 0679 59 cable negative	33	559 0744 59 Connection assy Y4	35
559 0680 59 cable positiv	33	559 0746 59 Control unit	35
559 0683 59 Cable pressure transmitter	33	559 0758 59 Connecting cable (Y4 and Y1)	31
559 0699 59 Knee switch	41	559 0759 59 Connecting cable (Y2 and Y3)	31
559 0711 59 Stepping-Motor Fei Long Type 57BY-GH250E25(Foot lifter)S1	13	559 0760 59 Ventil assy	31

09. INDEX - PARTS OF HOTAIR WELDING

PART NUMBER	PAGE	PART NUMBER	PAGE
559 0775 59 Cable Head conector assy	32, 33	559 1333 10 Screw	18
559 0810 10 Flexible magnet strip 29,5mm	15	559 1342 10 Frame	11
559 0841 09 Carrier with Solenoid	12	559 1344 10 Guide	18
559 0842 35 Foam-block	22	559 1348 10 Bolt	19
559 0844 09 Cover behind - assy	22	559 1349 10 Plate	19
559 0856 30 Head Cover	40	559 1350 10 Bolt	19
559 0948 30 Head Cover Long - Arm	40	559 1352 09 Tape drive	18
559 0953 11 Cable holder	14	559 1355 09 Cardan shaft assy	13
559 0956 15 Cover	11	559 1362 09 Silicone Wheel assy - 30mm	25
559 0964 01 Plate	14	559 1365 10 Knife	18
559 1305 11 Angle	22	559 1370 09 Cover Assy	11
559 1306 00 Timing belt pulley assy	26	559 1372 09 Plate	17
559 1307 10 Bolt	26	559 1378 33 Frame	11
559 1309 10 Shaft	13	559 1391 09 Wheel assy	26
559 1311 09 Piston Rod	13	559 1839 13 Hinge	22
559 1312 09 Drive wheel assy	26	559 1844 13 Plate	22
559 1313 11 Plate	27	559 2003 10 Cam	14
559 1315 11 Cover	27	559 2007 10 Head housing	14
559 1320 33 Frame behind	22	559 2008 10 Bushing	14
559 1327 10 Bushing	24	559 2013 10 Bolt	14
559 1328 09 Arm assy (back)	26, 27	559 2013 11 Disk	15
559 1330 09 Anvil frame assy	15, 16	559 2019 11 Plate	16
559 1332 10 Bushing	26	559 2023 00 Bearing pin	16

09. INDEX - PARTS OF HOTAIR WELDING

PART NUMBER	PAGE	PART NUMBER	PAGE
559 2033 00 Timing belt pulley assy	24, 25, 26, 27	559 2193 10 Washer	13
559 2051 09 Head housing assy	14	559 2194 10 Cylinder	13
559 2054 39 Ruler guide Art.-No. 5.54347	16	559 2198 10 Spring	13
559 2058 36 Cover	11	559 2224 11 Block	18
559 2065 10 Bushing	16	559 2232 10 Block	18
559 2066 15 Cover	12	559 2234 11 Plate	24
559 2080 09 Head Module electronics	12	559 2252 11 Plate	18
559 2081 10 Carrier	13	559 2253 10 Shaft	16
559 2084 09 Carrier Assy	13	559 2254 09 Piston rod	16
559 2116 39 spherical bearing, EGML-06	16	559 2256 10 Timing belt pulley	19
559 2117 11 Plate	13	559 2257 10 Timing belt pulley	18
559 2125 10 Bolt	16	559 2262 16 Plate	24
559 2142 10 Bushing	14	559 2265 10 Bolt	24
559 2143 00 Gear wheel assy	14	559 2267 10 Pin	26
559 2163 09 Drawer with sliders and screws	44	559 2269 06 Plate	27
559 2164 11 Plate	13	559 2286 10 Role	19
559 2166 11 Plate	16	559 2287 10 Bolt	19
559 2167 09 Standard Accessories	40	559 2290 13 Carrier	17
559 2168 39 Allen key SW3x100	40	559 2295 10 Guide	19
559 2185 00 Timing belt pulley assy	15	559 2364 16 Carrier	22
559 2186 10 Timing belt pulley	15, 25, 26	559 2366 13 Bolt	22
559 2187 10 Tooth belt	15, 27	559 2408 09 Wheel (silicone)	17
559 2191 00 Cam assy	14	559 2443 09 Tape wheel	19

09. INDEX - PARTS OF HOTAIR WELDING

PART NUMBER	PAGE	PART NUMBER	PAGE
559 2460 09 Arm assy	26, 27	559 2969 11 Angel	25
559 2461 16 Arm	26	559 2970 16 Arm	24
559 2462 16 Plate	26	559 2980 09 Frontarm assy	24, 25
559 2468 10 Plate	26, 27	559 2982 16 Cover	25
559 2475 09 Wheel	26	559 2984 16 Angle	22
559 2484 11 Anvil frame	15	559 2985 11 Plate	22
559 2489 11 Plate	16	559 2986 06 Cover	22
559 2490 11 Carrier	18	559 2991 10 Screw	17
559 2492 10 Knife	18	559 2992 10 Plate	25
559 2493 11 Fork head	16	559 2993 09 Silicone Wheel assy - 32mm	25
559 2494 11 Bolt	18	559 2997 36 Cover	18
559 2495 09 Knife assy (o.Z.)	18	559 2998 10 Table plate column from the front	44
559 2499 02 Tape guide	17	559 2999 10 Table wedge	44
559 2923 11 Cover	15	559 3000 11 Cable holder	14
559 2942 11 Cable holder	16	559 3800 14 Adapter roll Ø49mm	22
559 2945 10 Stopper	24	559 3801 14 Adapter roll Ø76mm	22
559 2946 10 Table plate column from behind	44	559 3802 35 Cover	17
559 2949 10 Clip	19	559 3815 06 Wheel assy	22
559 2950 09 Silicone Wheel assy - 26mm	25	559 3818 09 Extension Kit	41
559 2952 11 Plate	24	559 6036 59 Stepping Motor Fei Long with cable (S6)	25, 26, 27
559 2953 10 Carrier	19	559 7054 03 Safety catch	22
559 2967 09 Nozzle 25 (o.Z.)	17	559 9005 59 Control Unit	32
559 2968 10 Pipe	19	559 9017 59 Printed Button (Program Chain)	30

09. INDEX - PARTS OF HOTAIR WELDING

PART NUMBER	PAGE	PART NUMBER	PAGE
564-3MGT3-9 Tooth belt	26	N	
599 2005 15 Cover (glue)	12	NADOU P 032x08,0x8,0 Merkel Complete Piston (451057)	13
599 2259 39 Tooth belt 0180 3M-09	18	NADUOP 012x04,5x5,2 Complete piston	19
657-3MGT3-9 Tooth belt	25	NADUOP 20x6x6,7 Piston complet series 407207	16
565394 Flow sensor SFAB-200U-HQ 8-2SV-M12	35	O	
03010604 Quick connector	35	O-Ring 6x3 O-Ring 72NBR 872 (444523)	13
3080100 Plug fitting B-GE-8-1/8-KU	35	P	
3180108 Elbow fitting B-Wed-4-1/8-KU	35	PVQ33-5G-16-01F Compact proportional solenoid valve	35
03180170 L -Connector	15, 19	S	
03180607 push in fittings, male elbow - cylindric; B-WE dM-6-M5-KU	13	S151 099 076 S151 099 076	17
03180631 T-connector	35	T	
03210803 Right-angle plug B-WST-8-KU	35	Tube 8x1,25x170	35
8042566 Ventil	31	8x1,25x500	
17960501 Maintenance unit	35, 42	8x1,25x1000	
21386258 Quick coupling L-SA7-1/4-MS	35	Temperature resistant tube 4x0,8x900	
65480500 Screw	22	W	
B		W060401039 Grease	40
B02-23 DA 8mm Distance bolt (8654445-307)	15	WN56-5x30 Screw	22
D		WN 56 - M4x20 Screw	44
D-143B Spring	19		
J			
J-D1-1/4-PVC Sealing ring 1/4	35		
K			
KQG2W04 - M5 one touch fitting, Extende male elbow	17		

09. INDEX - PARTS OF HOTAIR WELDING



VETRON TYPICAL EUROPE GmbH
Clara-Immerwahr-Str. 6
67661 Kaiserslautern, Germany
Tel.: +49 6301 320 75-0
Fax: +49 6301 320 75-11

info@vetrontypical.com
www.vetrontypical.com